

0  
43  
C

MACK - ANN SL  
N-122-B

•197

•79

•187  
M E Seckel  
4-26-62 1.09 Ac

①  
H-3150

Wilbur H. & Miriam F. Lamp  
12-6-63

Dorothy Ickes  
5-1-67

0  
42  
J

ROAD

68.382 Ac.

56.4882 Ac.

ROAD

•169

WILBUR H. & Miriam F. Lamp  
8-21-73 5-11-88

9-22-76

•602  
Jerome T. & Lois A. Bushby  
7-13-73 4.992 Ac.

H-4100 •657  
Ronald G. & Patricia  
A. Hether  
12-23-80 1.104 Ac

29.336 Ac.

•169

8-21-73  
(6.32 Ac.)

•169

8-21-73  
(20 Ac.)

(21 Ac.)

H-4165 •72  
J.T. & L.A. Bushby  
7-6-73 2.396 Ac.

9-22-76  
(9 Ac.)

(20 Ac.)

H-4200  
•169

Southeast Franklin Investment Co.  
9-22-76

Total = 55.611 Ac.

Miriam F. Lamp  
8-21-73

9-22-76

9-22-76

(42.57 Ac.)  
Total = 98.226 Ac.

WILBUR H. & Miriam F. Lamp  
5-8-88 5-11-88  
2.271 Ac.

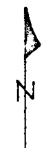
GENDER

0  
40  
W

BRICE

0  
46  
A

O-43-E  
 MADISON TWP.  
 R20-21 TWP. II-15



SCALE 1"=200'

E=HIGHWAY EASEMENT

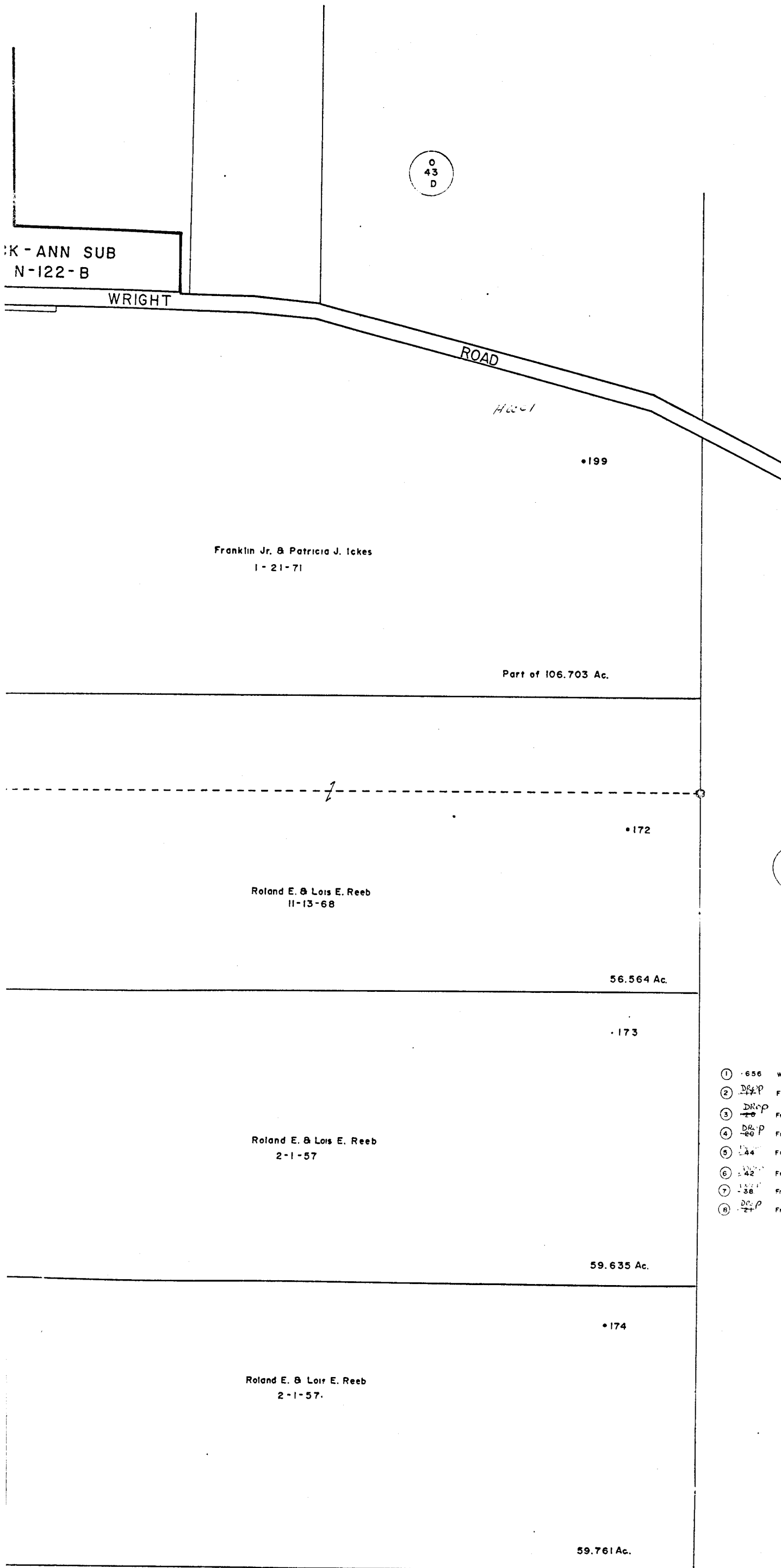
TAXING DISTRICTS, DISTRICT CODES

MADISON TWP-  
 CANAL WINCH. S.D. 18118+

CITY OF COLS-  
 CANAL WINCH. S.D. 490

FRANKLIN COUNTY SURVEY MONUMENT

HOUSE NUMBERS



- ① - 656 Wiber HBMF Lamp 1-21-77 528 Ac.
- ② ~~DRP~~ Franklin County Comm 1-18-72 2.192 Ac.
- ③ ~~DRP~~ Franklin County Comm 1-18-72 1.612 Ac.
- ④ ~~DRP~~ Franklin County Comm 1-18-72 2.118 Ac.
- ⑤ ~~DRP~~ Franklin County Comm 5-22-72 1.239 Ac.
- ⑥ ~~DRP~~ Franklin County Comm 5-22-72 1.365 Ac.
- ⑦ ~~DRP~~ Franklin County Comm 5-22-72 1.436 Ac.
- ⑧ ~~DRP~~ Franklin County Comm 1-18-72 2.297 Ac.