

M A R I O N T O W N S H I P

41 A

41 E

ALUM CREEK DRIVE

WATKINS ROAD

WATKINS ROAD

PARCEL NO. 2

PARCEL NO. 3A

...156597  
Paine Development Co, Ltd & Sam Paine  
12-19-79  
Deed = 34.009 Ac.  
Dup. = 34.172 Ac.

...156581  
E. Demeter  
10-28-78  
6.302 Ac.  
Paine Development Co. Ltd. & Sam Paine  
12-28-71  
5.973 Ac.

...156583  
Board of Education  
(City of Cois)  
5-15-74  
25.09 Ac.

PARCEL NO. 4

Velma D. Raduege ET AL (4)  
7-7-72  
0.057 Ac.

LOT 2  
...156584

LOT 1  
63.943 Ac.

...156608  
Donald E. & Dorothy Werner  
2-9-55  
8.798 Ac.

156576  
Joseph R. & Lynn E. Marzluft  
3-25-85

...156610  
156569  
2 Ac.

WATKINS ASSOC'S.  
3-2-87  
WATKINS ASSOCIATES  
3-2-87  
Valley Green  
Cond. No. 3  
Valley Green  
Cond. No. 1  
Valley Green  
Cond. No. 2

...156588  
Otha L. & Faith P. Stutz  
9-5-79  
...156589  
Otha L. & Faith P. Stutz  
9-5-79  
1-415 Ac.

...156626  
ER & G.P. Raduege  
7-25-77  
1 Ac.

LOT 3  
Michael & Vicki Schulman  
11-18-87  
2.0937 Ac.

LOT 4  
Walter E. & Wanda E. Davitz  
3-19-86  
1.0 Ac.  
John M. & Lana Thomas  
0-15-80  
2.50 Ac.

LOT 5

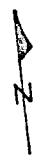
COMPLETE RECORD 32 PAGE 574

0  
41  
A

50  
114

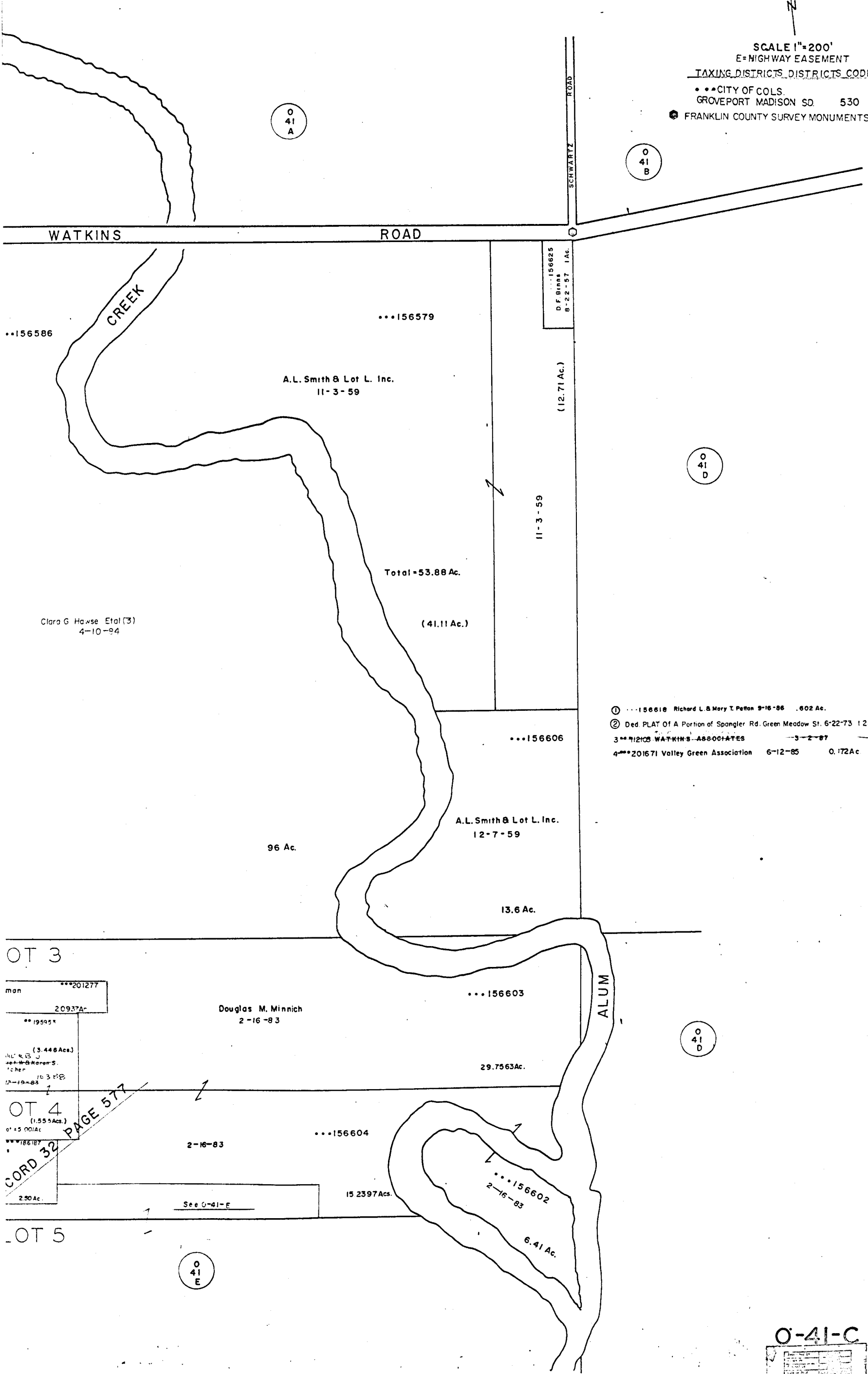
0  
41  
E

O-41-C  
MADISON TWP.  
R 21 TWP 11



SCALE 1"=200'  
E=HIGHWAY EASEMENT  
TAXING DISTRICTS DISTRICTS CODE

•••CITY OF COLS.  
GROVEPORT MADISON SD. 530  
● FRANKLIN COUNTY SURVEY MONUMENTS



- ① ...156618 Richard L. & Mary T. Patton 9-16-86 .602 Ac.
- ② Ded. PLAT Of A Portion of Spangler Rd. Green Meadow St. 6-22-73 1.282 Ac.
- 3\*\* 712103 WATKINS ASSOCIATES 3-2-87 0.301 Ac.
- 4\*\* 201671 Valley Green Association 6-12-85 0.172 Ac.

OT 3

\*\*\*201277  
man  
2.0937Ac.  
\*\*195954  
(3.448Ac.)  
J. R. & B. J.  
J. W. & Karen S.  
T. C. H.  
10 3 188  
12-19-83

OT 4  
(1.555Ac.)  
0' +5 001Ac

\*\*\*186187  
2.50Ac.

OT 5

O 41 E

O 41 D

O 41 A

O 41 B

O-41-C