

0  
39  
E

CLAYCRAFT ROAD

ROAD

T

H

E

M-95

LANDRUM C

NORTH

ENTERPRISE DR

GAYANNA

PARKWAY

I N D U S T R I A L

M-95-AA

Z O N E

RR. Co.  
E.C. & P.C.C.

RR. Co.

3-3-25 Ac

\*\*\*13203

\*\*\*13206

R. E. Masen Jr.  
ETAL (3)  
Daniel E. Edwards ETAL (3)  
7-16-74 1-12-87  
(To Cor 7-7-74)

Daniel E. Edwards ETAL (3)  
7-16-74 1-12-87  
(To Cor 7-2-73)  
(To Cor 7-2-73)

Bradview Service Corp  
10-9-79  
Bellview Apartments  
Limited Partnership  
3-15-85

13.176 Ac  
12.679 Ac

13.679 Ac

4.447 Ac

SEC. 0-39-C

SEC. 0-39-G

Willard D. Campbell  
11-28-62

Erhard T. Eisenm  
8-20-79  
Taylor Station  
Bellview L.P.  
9-15-79  
4-17-84  
22.3 Ac

WESTBOURNE AVE.  
State of Ohio (Highway)  
8-31-73  
Pt of G 34 Ac

Willard D. Campbell  
11-28-62

Plot of 30.780 Ac

Westbourne  
Dev. Co.  
3-8-74  
Bellview L.P.  
9-15-79  
4-17-84  
22.3 Ac

Forest Lawn Memorial Ass'n  
8-9-48

Forest Lawn Memorial Ass'n  
1-28-49

8.501 Ac

27.846 Ac

Forest Lawn Memorial Ass'n  
6-1-48

15.114 Ac

Part of a 28.398 Ac Tract  
Forest Lawn Memorial Ass'n  
6-1-48

ROAD

TAYLOR STATION

TAYLOR

0  
39  
G

0  
106  
B

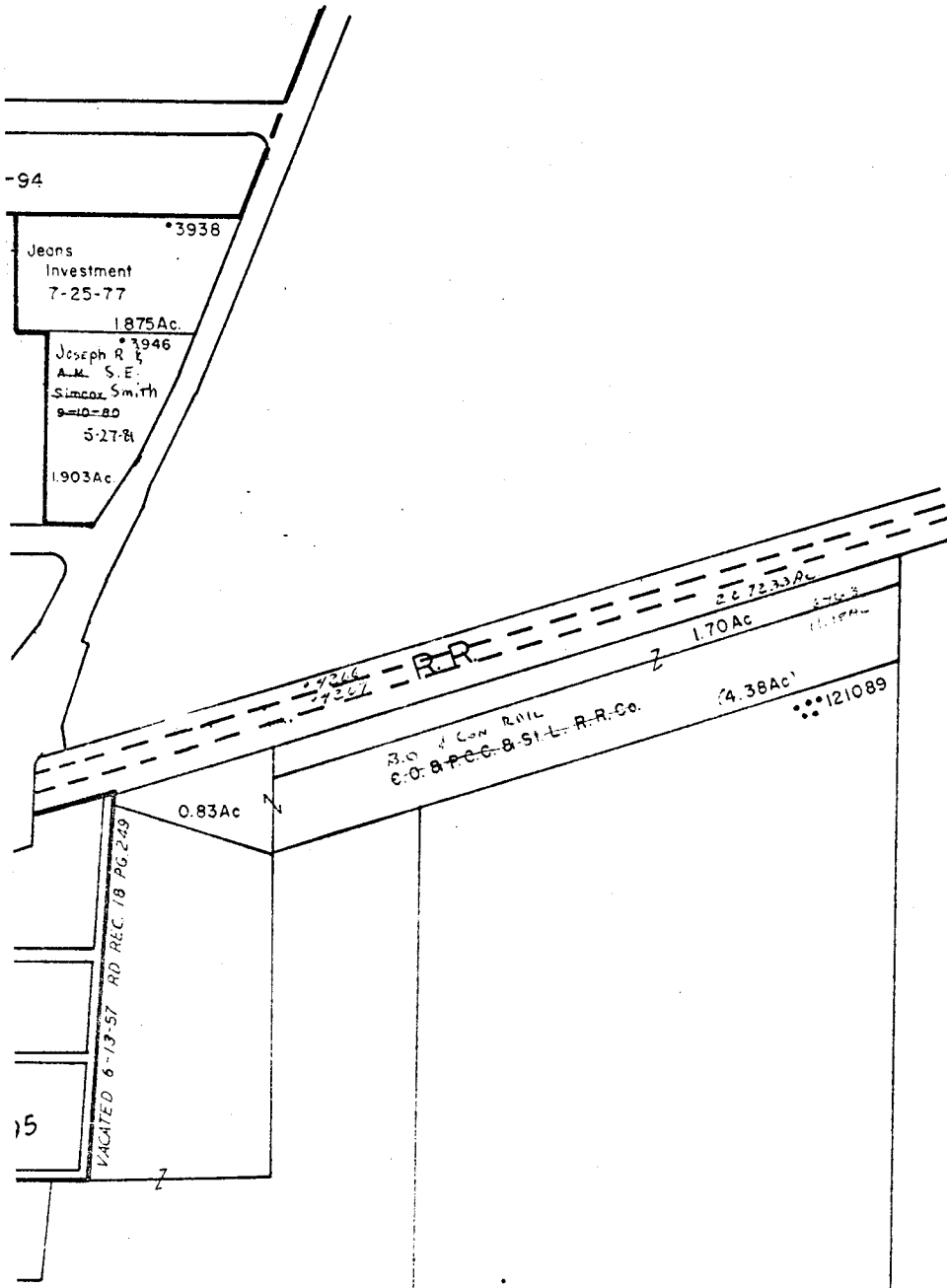
O-39-H

JEFFERSON TWP  
R.16 TWP 1



SCALE 1" = 200'

E = HIWAY EASEMENT  
TAXING DISTRICT DISTRICT CODE  
• CITY OF GAHANNA  
••• COLUMBUS-JEFFERSON  
•••• COLUMBUS



- 1 DROP City of Gahanna 5-29-73 0.097Ac
- 2 DROP County of Franklin 9-17-73 0.3247Ac
- 3 ••• 12102 Equivestors Co. 5-29-71 0.052 Ac. (In Road)
- 4 DROP FRANKLIN COUNTY D 3175 PAGE 622

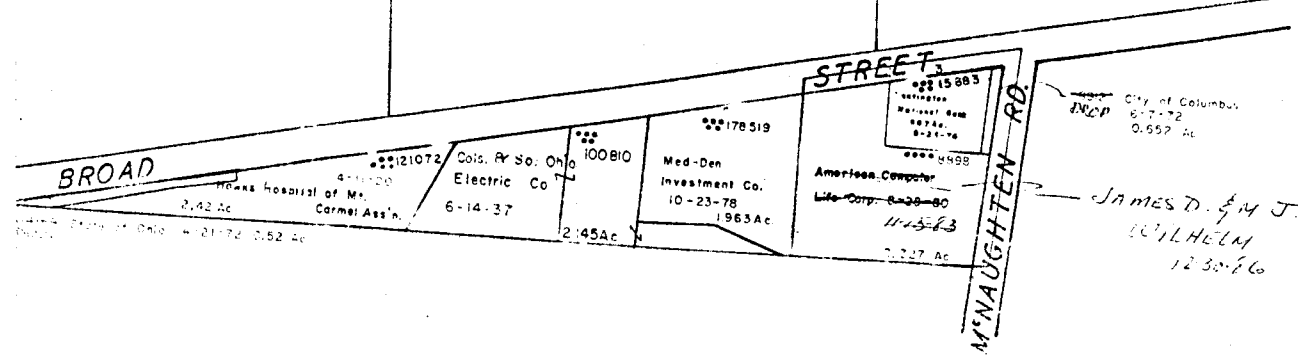
Western Electric Co. Inc.  
6-3-57

0  
39  
J

13

14

Pt. of 252.505Ac



O-39-H

569