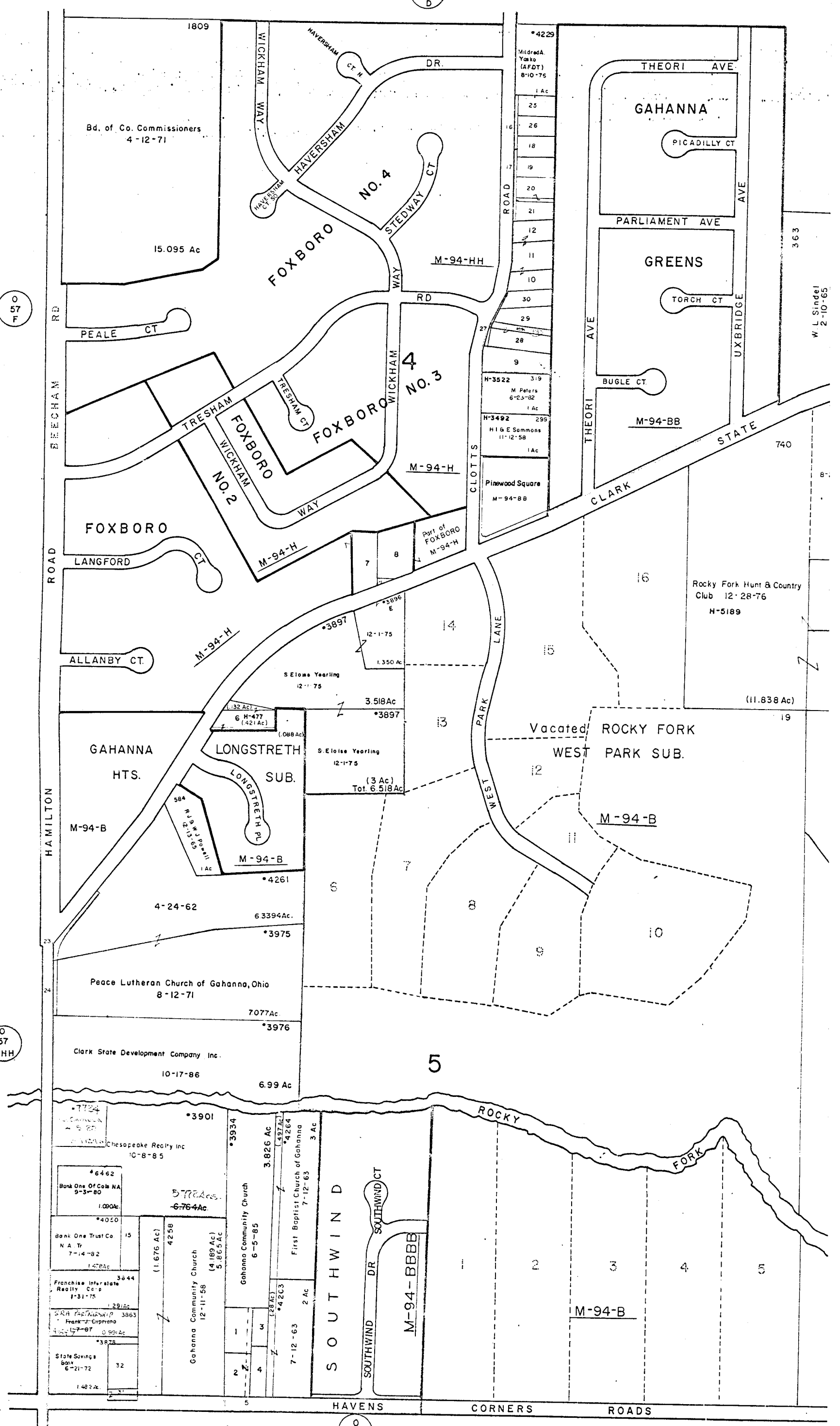


0
37
D

0
57
F

0
57
HHH

0
39
A

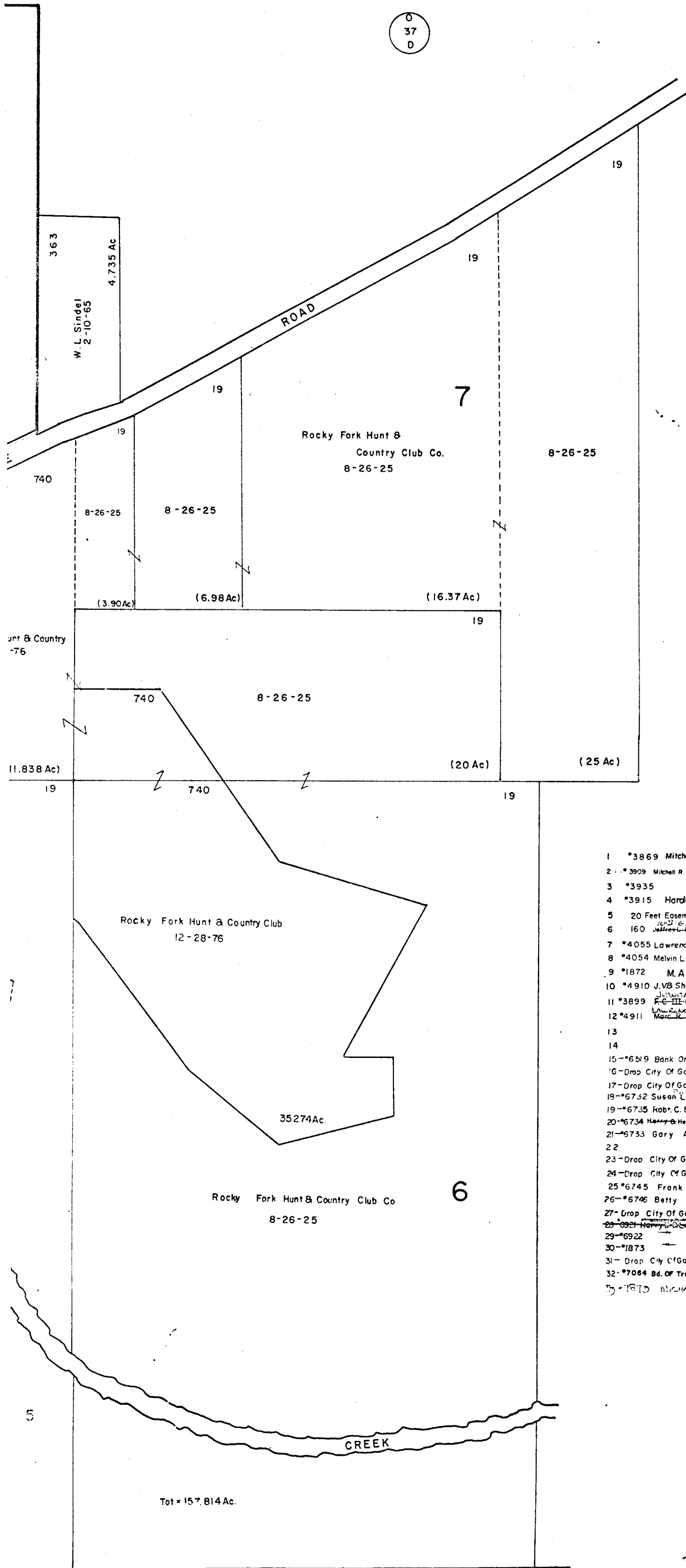


O-37-G
JEFFERSON TWP.
R.16 TWP.1



SCALE 1"=200'
E= HIGHWAY EASEMENT
TAXING DISTRICTS - DISTRICT CODE
JEFFERSON 170
*CITY OF GAHANNA 025

H--HOUSE NUMBERS



1	*3869 Mitchell R Daniels & Carol L Nunemaker	5-31-85	.357 Ac
2	*3909 Mitchell R Daniels & Carol L Nunemaker	8-28-85	0.3012 Ac
3	*3935 Harold C Smith	4-6-78	.199 Ac
4	*3915 Harold C. Smith Jr.	4-6-78	.3168 Ac
5	20 Feet Easement D.B. 3774 Pg. 230, D.B. 3221 Pg. 488		
6	160 Jeffrey A. Blum	3-18-82	6321 Ac
7	*4055 Lawrence J BKA Schwade	2-2-82	.575 Ac
8	*4054 Melvin L. & Dorothy J Sindel	8-26-83	.662 Ac
9	*1872 M. A. Grosshart	3-16-77	.55 Ac
10	*4910 JVB Sherry L. Ruby	9-20-82	302 Ac
11	*3899 JUANITA A PLWA	12-5-84	411 Ac
12	*4911 F.C. III & Peggy A. Baumler	11-28-86	.287 Ac
13	Lawrence E S G C. TRWA X	8-2-88	
14	Marcel B. & Jo E. Trimmer	11-14-86	.287 Ac
15	*6519 Bank One Trust Co N.A. Tr	7-14-82	0.37 Ac
16	Drop City Of Gahanna	9-23-81	0.025 Ac
17	Drop City Of Gahanna	9-23-81	0.032 Ac
18	*6732 Susan L. Mowery	11-25-86	0.287 Ac
19	*6735 Robt. C. & Debra K. Secrest	11-12-86	0.287 Ac
20	*6734 Harry & Helen L. Secrest	5-8-84	Total = 0.301 Ac. (0.287 Ac) (0.014 Ac)
21	*6733 Gary A Secrest	6-5-86	0.272 Ac
22	Drop City Of Gahanna (Hi-way)	1-26-83	0.3166 Ac
23	Drop City Of Gahanna (Hi-way)	1-26-83	0.2470 Ac
24	*6745 Frank A & Bonita L Azeltine	9-5-85	0.276 Ac
25	*6746 Betty A Rea	9-5-85	0.276 Ac
26	Drop City Of Gahanna	6-15-84	0.028 Ac
27	Drop City Of Gahanna	6-15-84	0.028 Ac
28	*6921 Henry C. & Blanche A. Blum	6-16-84	0.435 Ac
29	*6922 STEVEN R & PA. ENAC	8-4-87	0.376 Ac
30	*1873 " " "	8-27-87	0.294 Ac (15-28-86 Ac. Changed)
31	Drop City Of Gahanna	11-25-85	0.115 Ac
32	*7064 Bd. Of Trustees Of Ohio State University	3-13-87	0.574 Ac
33	*1870 MICHAEL & MADELINE MILLER	2-27-87	(0.132 Ac)
			(0.435 Ac)
			TOTAL = 0.537 Ac

Tot = 157.814 Ac.

O-37-G

