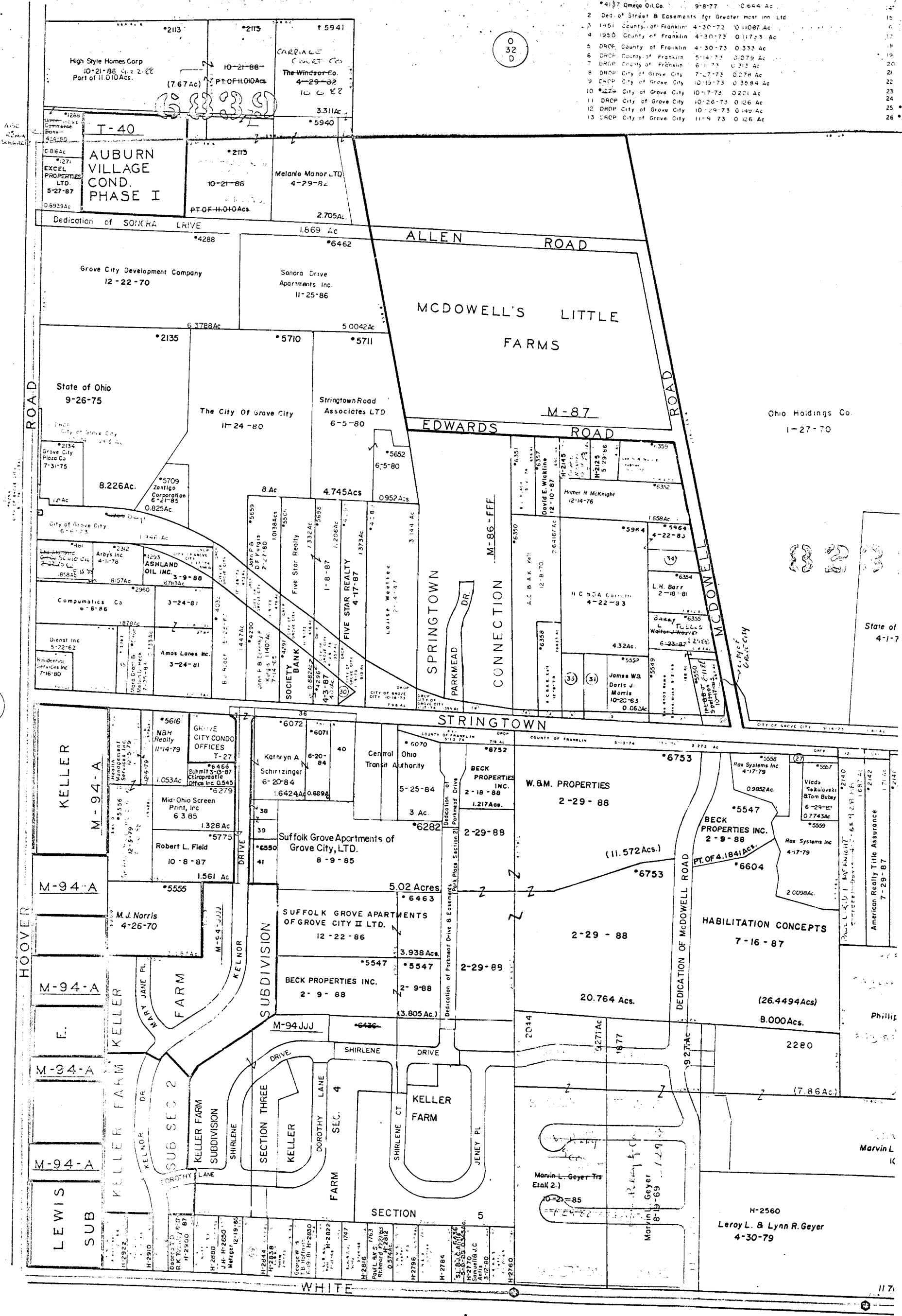


- \*4137 Omega Oil Co. 9-8-77 0.644 Ac
- 2 Ded. of Street & Easements for Greater Most Inn Ltd
- 3 1951 County of Franklin 4-20-73 10.11087 Ac
- 4 1950 County of Franklin 4-30-73 0.11743 Ac
- 5 DROP County of Franklin 4-30-73 0.333 Ac
- 6 DROP County of Franklin 5-14-73 0.079 Ac
- 7 DROP County of Franklin 6-11-73 0.313 Ac
- 8 DROP City of Grove City 7-27-73 0.278 Ac
- 9 DROP City of Grove City 10-19-73 0.3584 Ac
- 10 1274 City of Grove City 10-17-73 0.221 Ac
- 11 DROP City of Grove City 10-26-73 0.126 Ac
- 12 DROP City of Grove City 10-29-73 0.149 Ac
- 13 DROP City of Grove City 11-9-73 0.126 Ac

0  
32  
D

0  
34  
A



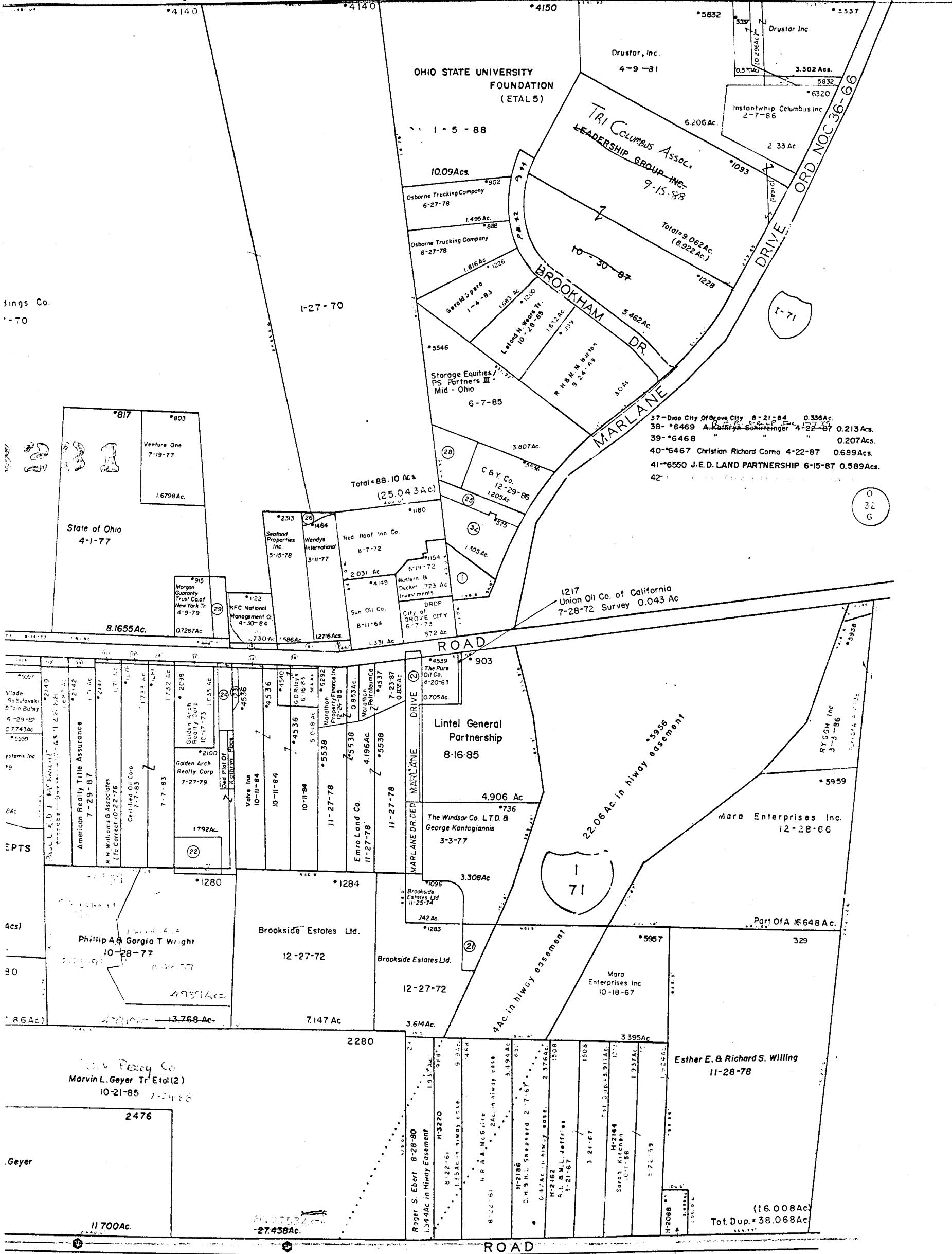
SCALE 1"=200'  
V.M.S.

E=HIGHWAY EASEMENT  
TAXING DISTRICT DISTRICT CODE

\*GROVE CITY 040  
JACKSON 160

H-HOUSE NUMBERS

- 14 DROP City of Grove City 1-18-74 0.174 Ac
- 15 DROP City of Grove City 3-25-74 0.186 Ac
- 16 DROP City of Grove City 3-29-74 0.121 Ac
- 17 DKOP City of Grove City 5-6-74 0.103 Ac
- 18 DROP City of Grove City 5-6-74 0.104 Ac
- 19 1130 Donald L. & W.J. Walsh 2-11-80 0.574 Ac
- 20 DROP Board of County Commissioners (Hi-way) (C.I.P. 73 CV-04-1144) 8-9-74 0.189 Ac
- 21 2122 The Windsor Co. & George Kontogiannis 2-28-77 0.386 Ac
- 22 2099 Robert L. & Helen C. Foreman 2-23-84 0.350 Ac
- 23 DED of Road Right of Way For Salmor Inc. 5-6-75 0.093 Ac
- 24 DED of Road Right of Way For Jim Poenisch Enterprises Inc. 3-6-75 0.277 Ac
- 25 \*DRCP City of Grove City 11-16-78 0.454 Ac
- 26 \*DROP City of Grove City 3-28-79 0.066 Ac
- 27 \*556 City of Grove City 7-27-79 0.0983 Ac
- 28 \*1269 Edward C. & June E. Wilts 11-16-86 0.785 Ac
- 29 DROP City of Grove City 9-4-79 0.3139 Ac
- 30 \*5596 SOCIETY BANK 4-3-87 0.084 Ac
- 31 \*5838 Gregory Skinner 9-30-81 0.477 Ac
- 32 \*575 Minneapolis Teachers Retirement Fund Assn 7-28-82 1.305 Ac
- 33 \*396 Gregory C. Skinner 6-19-87 0.757 Ac
- 34 \*6336 Robert C. & Dorothy A. Curnutte 4-22-83 0.405 Ac
- 35 \*3787 Robert Y. Densl 11-22-88 0.264 Ac
- 36 Drop City of Grove City 6-7-84 0.8298 Ac



Sings Co.  
-70

EPTS

Acs)

BO

Geyer

\*817  
\*803  
Venture One  
7-19-77  
1.6798 Ac.

State of Ohio  
4-1-77  
8.1655 Ac.

\*915  
Morgan Guaranty Trust Co of New York Tr.  
4-9-79  
0.7267 Ac.

\*1122  
KFC National Management Co.  
4-30-84  
0.730 Ac.

\*2149  
Viado Sstulovski  
5-29-82  
0.7743 Ac.

\*2142  
American Realty Title Assurance  
7-29-87

\*2141  
R. H. Williams & Associates  
(To Correct) 10-22-76

\*1733  
Certified Oil Corp  
7-7-83

\*1732  
Golden Arch Realty Corp  
7-27-79

\*2100  
Golden Arch Realty Corp  
7-27-79

\*1792  
Phillip A. & Gorgia T. Wright  
10-28-77

\*1280  
Brookside Estates Ltd.  
12-27-72

\*1284  
Brookside Estates Ltd.  
12-27-72

\*1283  
Brookside Estates Ltd.  
12-27-72

2476  
Marvin L. Geyer Tr Etal (2)  
10-21-85

11700 Ac.

27.458 Ac.

\*2313  
Seafood Properties Inc.  
5-15-78

\*1464  
Wendys International  
3-11-77

\*1180  
Red Roof Inn Co.  
8-7-72

\*1154  
Western B Decker Investments  
6-19-72

\*4199  
Sun Oil Co.  
8-11-64

\*1276  
City of Grove City  
6-7-73

\*1331  
DROP  
8-72 Ac.

\*4536  
Vibre Inc  
10-11-84

\*4536  
Marathon Property Finance Inc  
7-25-83

\*5538  
Marathon Petroleum Co  
11-27-78

\*5538  
Emro Land Co  
11-27-78

\*5537  
Marathon Petroleum Co  
11-27-78

\*1280  
Phillip A. & Gorgia T. Wright  
10-28-77

\*1284  
Brookside Estates Ltd.  
12-27-72

\*1283  
Brookside Estates Ltd.  
12-27-72

2280  
Roger S. Ebert  
8-28-80

1.344 Ac in Hiway Easement

8-22-61  
1.55 Ac in Hiway Easement

8-22-61  
H. R. & M. G. Jite  
2 Ac in Hiway Easement

H-2186  
D. H. & L. Shepherd  
2-7-67

H-2162  
R. L. & M. L. Jeffries  
3-21-67

1508  
3-21-67

H-2144  
Sarah Kitchen  
1-11-56

1.337 Ac

5-22-59

\*1180  
C.B.Y. Co.  
12-29-85  
1.205 Ac

\*1180  
Lintel General Partnership  
8-16-85

\*903  
The Pure Oil Co.  
4-20-63  
0.705 Ac

\*736  
The Windsor Co. L.T.D. & George Kontogiannis  
3-3-77

\*5936  
22.06 Ac in Hiway Easement

\*5957  
Mara Enterprises Inc  
10-18-67

\*1280  
Phillip A. & Gorgia T. Wright  
10-28-77

\*1284  
Brookside Estates Ltd.  
12-27-72

\*1283  
Brookside Estates Ltd.  
12-27-72

3.614 Ac

3.395 Ac

Esther E. & Richard S. Willing  
11-28-78

16.008 Ac  
Tot. Dup. = 38.068 Ac

37-Drop City of Grove City 8-21-84 0.336 Ac

38-\*6469 A. Kathryn Schmitzinger 4-22-87 0.213 Ac

39-\*6468 " 0.207 Ac

40-\*6467 Christian Richard Corna 4-22-87 0.689 Ac

41-\*6550 J.E.D. LAND PARTNERSHIP 6-15-87 0.589 Ac

42

1217  
Union Oil Co. of California  
7-28-72 Survey 0.043 Ac

\*5959  
RYGOH Inc  
3-3-86

\*5957  
Mara Enterprises Inc  
10-18-67

Part Of A 16648 Ac

\*1280  
Phillip A. & Gorgia T. Wright  
10-28-77

\*1284  
Brookside Estates Ltd.  
12-27-72

\*1283  
Brookside Estates Ltd.  
12-27-72

3.614 Ac

3.395 Ac

Esther E. & Richard S. Willing  
11-28-78

16.008 Ac  
Tot. Dup. = 38.068 Ac

Gregory Neff  
10-27-85

0  
34