

- ① 1059 C.R. & C.E. Hook 7-18-67 328A
- ② 984 Mark A. & Susan E. Dawson II-3-88 654Ac
- ③ \*5595 Clifford R. & C. Hook 9-5-79 0.177Ac.

13889

13888

Total = Dup = 97.545Ac.

Total = 6690.1Ac

O 31 A

O 31 B

\*5967  
 Universal Concrete Products Inc.  
 8-14-86  
 3.919Ac.

City of Grove City  
 5-21-79  
 DROP  
 2.455Ac.

City of Grove City  
 10-24-78  
 DROP  
 1.197Ac.

City of Grove City  
 DROP  
 2.794 Ac.

DAR	NELL'S
2ND.	AVE
TO	URBANC
M -	94 - A -

Arthur Shipp 5-5-76  
 John H. & William C. Gilbert  
 1-19-84  
 6.17 Ac.  
 1-19-84  
 5 Ac.

COOLEY'S URBANCREST SUBDIVISION  
 JOHN STREET  
 GILBERT  
 NO. ONE

1826  
 E.R. & F.A. Cheney 11-01-63  
 7-1-63  
 1046  
 D.W. & D.A. Mergel  
 6-8-53  
 12593.4c  
 1047  
 J.R. & I. Shilling  
 10-13-55  
 14382 Ac  
 855  
 Wendel P. & Suzanne Taylor  
 1-11-79  
 3393 Ac  
 965  
 5-28-62  
 Lerry A. & Bobbie A. Reas  
 7-26-85  
 1666 Ac

Paul F. Harper  
 &  
 Marcia J. Spence  
 5-29-86  
 5240 Ac.

Nathaniel H. Helms  
 3-2-76  
 (8.03 Ac)  
 (.16 Ac)  
 Total = 20.03 Ac.

3-2-76  
 (271 Ac)

(18.31 Ac.)

(20.24 Ac)

(24.11 Ac.)

(60 Ac)

(53 Ac)

4-11-55

Stadeco, Inc.  
 4-11-55

Ronald E. Scherer  
 1-7-83

Universal Concrete Products Inc.  
 3-8-83

Arthur Shipp 5-5-76  
 10Ac.

John H. & William C. Gilbert  
 1-19-84  
 6.17 Ac.  
 1-19-84  
 5 Ac.

COOLEY'S URBANCREST SUBDIVISION  
 JOHN STREET  
 GILBERT  
 NO. ONE

3077

4-11-55

3079

3077

24,333 Ac

5818

5967

5967

5967

5967

5967

5967

5967

5967

5967

5967

O-31-B  
JACKSON TWP.

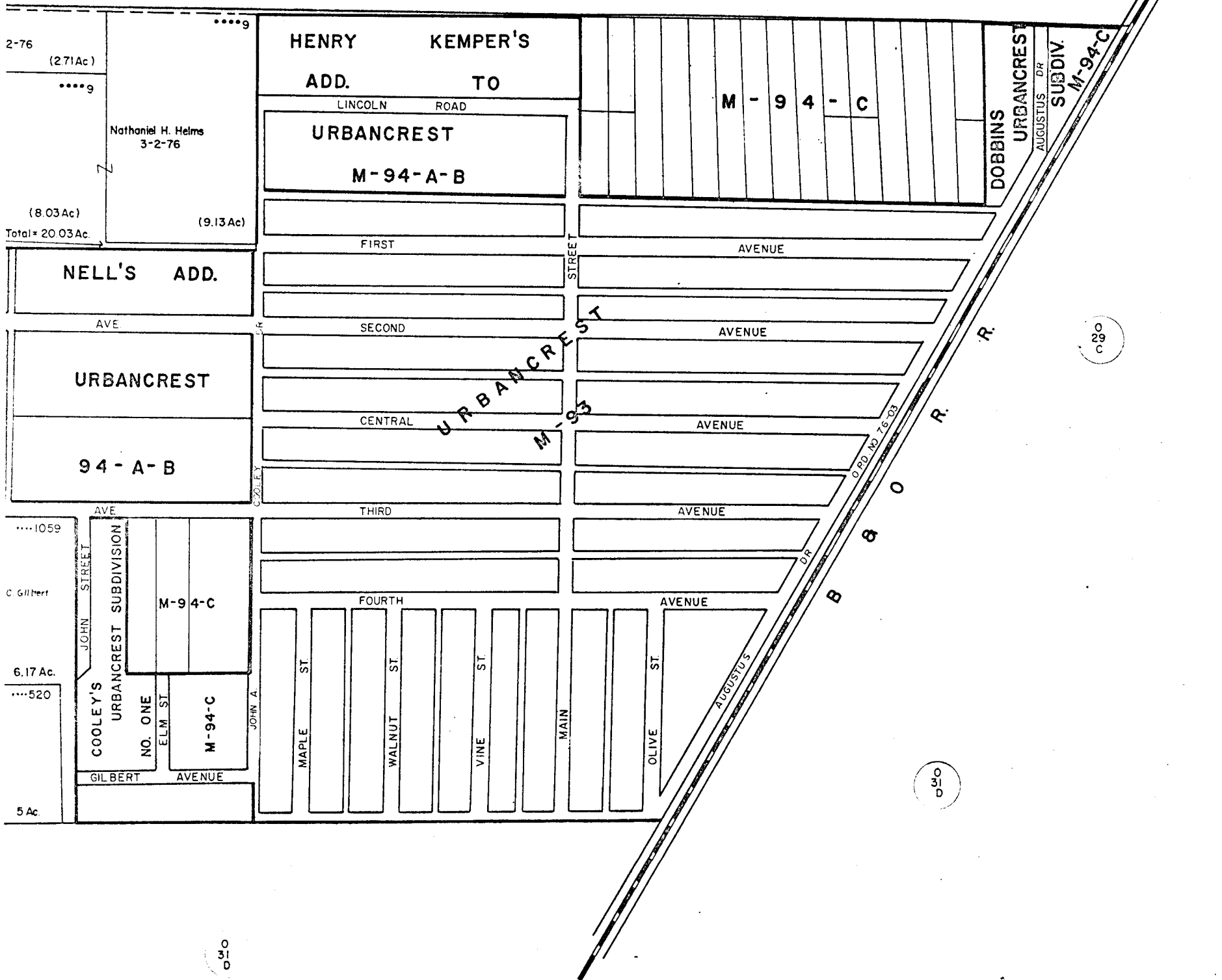


SCALE 1"=200'

V.M.S.  
E=HIGHWAY EASEMENT  
TAXING DISTRICT DISTRICT CODE  
JACKSON TWP. 160  
• GROVE CITY 040  
••••• URBANCREST CORP. 161

O  
29  
B

3745



O  
29  
C

O  
30

O  
30

1388

O-31-B

