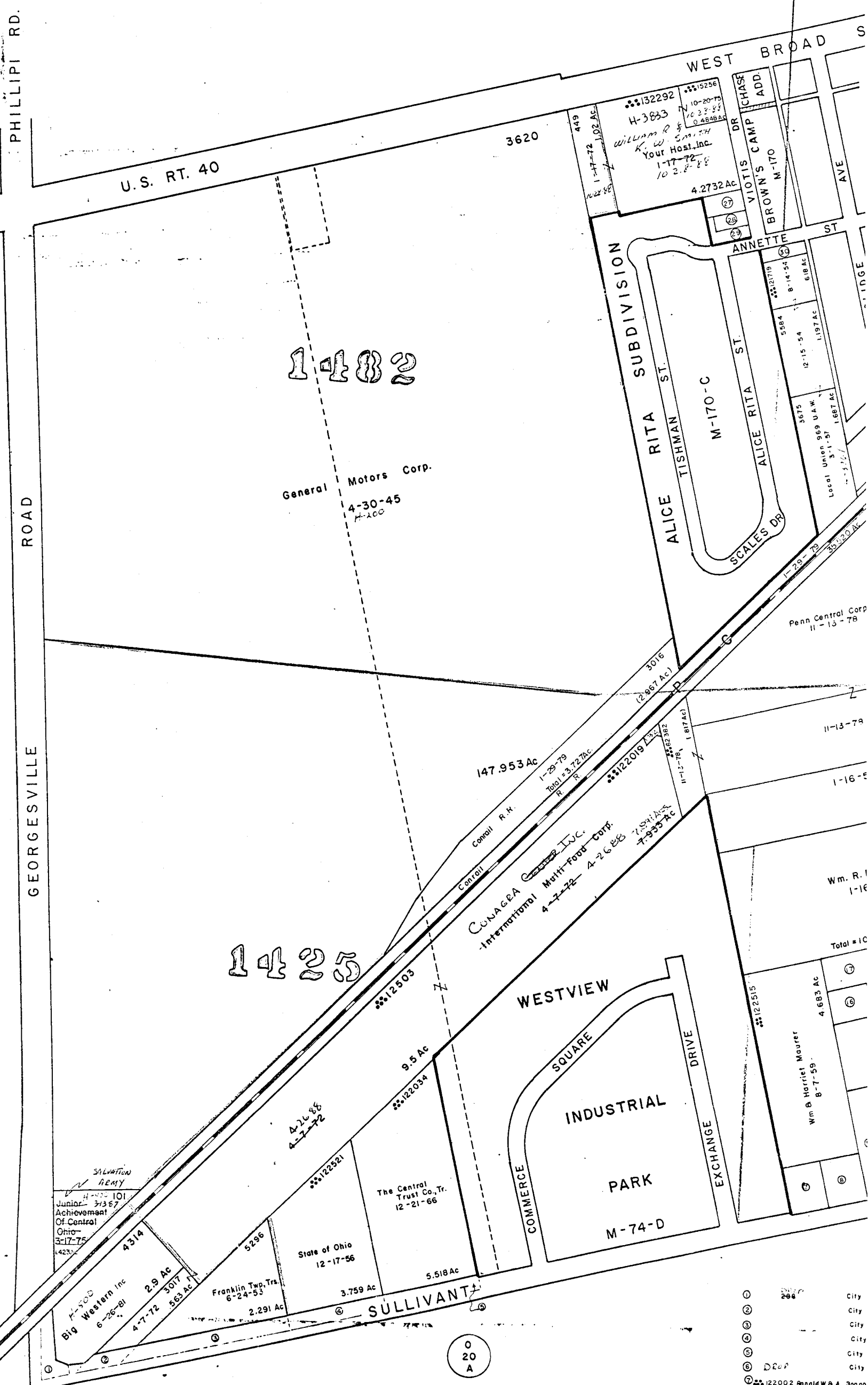


27 24 1014 Christopher & Melody K. Rose 7-29-85 228 Ac
 Roger H. & P. A. SHERMAN 5-28-87
 28 1061 Wilfred Seely 4-8-81
 29 1461 Roger H. & P. A. SHERMAN 5-28-87 (151 Ac) TOTAL 0.320 ACS.
 30 14095 Wilfred Seely & Alberta M. Schaefer 4-8-81 (169 Ac)
 31 22033 Shee H. Yee 10-7-89 .187 Ac
 32 3016 Corral 1-29-79 3.72 Ac
 33 21486 C.A. & SOUTHERN OHIO ELECTRIC CO 4-26-88 (T. CORR. 6147) 0.939 ACS.

19
A



19
C

19
C

20
A

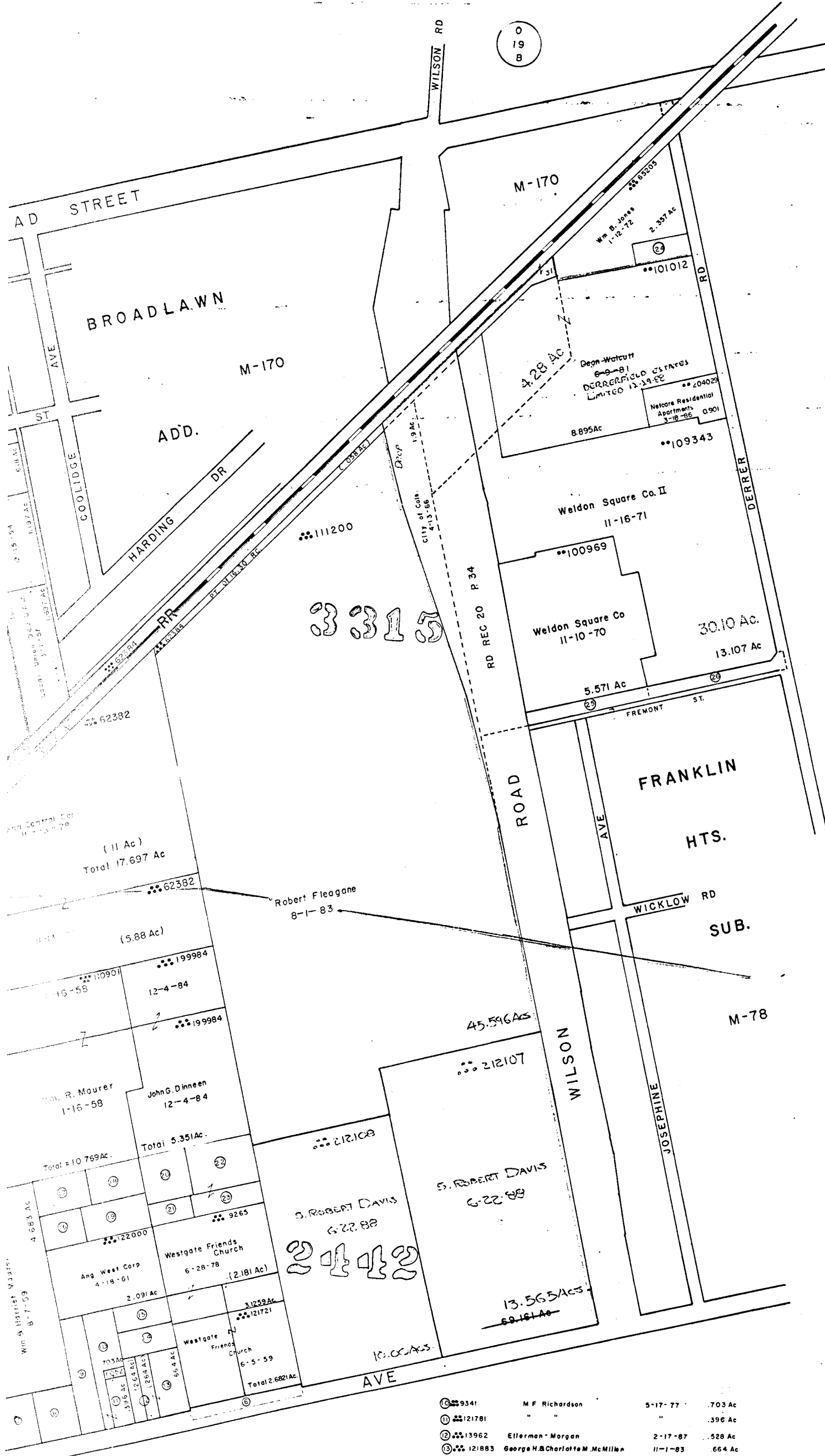
- ① City
- ② City
- ③ City
- ④ City
- ⑤ City
- ⑥ City
- ⑦ City
- ⑧ City
- ⑨ City
- ⑩ City
- ⑪ City
- ⑫ City
- ⑬ City
- ⑭ City
- ⑮ City
- ⑯ City
- ⑰ City
- ⑱ City
- ⑲ City
- ⑳ City
- ㉑ City
- ㉒ City
- ㉓ City
- ㉔ City
- ㉕ City
- ㉖ City
- ㉗ City
- ㉘ City
- ㉙ City
- ㉚ City
- ㉛ City
- ㉜ City
- ㉝ City
- ㉞ City
- ㉟ City
- ㊱ City
- ㊲ City
- ㊳ City
- ㊴ City
- ㊵ City
- ㊶ City
- ㊷ City
- ㊸ City
- ㊹ City
- ㊺ City
- ㊻ City
- ㊼ City
- ㊽ City
- ㊾ City
- ㊿ City

0-19-D
FRANKLIN TWP



SCALE 1" = 200'

V. M. S.
E=HIGHWAY EASEMENT
TAXING DISTRICT-DISTRICT CODE
FRANKLIN TWP. 140
•• COLS. SOUTHWESTERN 570
••• CITY OF COLUMBUS 010
H•• HOUSE NUMBERS



City of Cois	8-31-72	.1 Ac
City of Cois	8-3-67	.097 Ac
City of Cois	8-3-67	.700 Ac
City of Cois	1-10-68	.362 Ac
City of Cois	5-12-67	.362 Ac
City of Cois	4-20-73	.366 Ac
Ronald W & A Rogge	3-18-82	.6475 Ac
Guy L & Joan M Ferrelli	11-12-82	.6595 Ac
R. L. B. M. Rieker	7-25-74	.762 Ac

0
20
A

⑥ 9341	M F Richardson	5-17-77	.703 Ac
① 121781	"	"	.396 Ac
② 13962	Ellerman - Morgan	2-17-87	.528 Ac
③ 121883	George H. & Charlotte M. McMillan	11-1-83	.664 Ac
④ 122027	George H. & C.M. McMillan	4-23-76	.385 Ac
⑤ 36805	Robt. E. & J.F. Twiss	6-16-75	.385 Ac
⑥ 89627	Dean J. Rhodes	10-28-77	.387 Ac
⑦ 122396	J D & DM Rhodes	6-21-62	.52275 Ac
⑧ 122013	Wm. T. B. James H. Sheehy	3-26-76	.52275 Ac
⑨ 122001	Hankle B. Cotton	12-19-68	.6585 Ac
⑩ 122018	Larry & Susan J. Frazier	2-16-73	.5805 Ac
⑪ 122006	"	2-3-77	.2755 Ac
⑫ 122003	Hoslett L. Ranney	1-30-66	.8790 Ac
⑬ 122021	"	"	.446 Ac
⑭ 12932	Cypress Cable T V of Cois	5-23-73	.403 Ac
⑮ 103173	City of Cois	2-13-73	.429 Ac
⑯ 103167	City of Cois	2-13-73	.528 Ac

0-19-D

