

1
2
3

C

B

530

1279

Ralph P & John De Matteo
9-29-52

City Of Columbus
8-8-73

City Of Columbus
8-8-73

City Of Columbus
8-8-73

City Of Columbus
8-8-73

Big Bear Stores Co.
9-30-82

Joy H. Sarles & Bruce L. Krag
6-16-77
KELPER Company
3-28-88

Board Of Education
6-8-54
11-6-46

SKIDMORE

M-119
HILLS

A D D

Big Bear Stores Co.
9-29-82

Halmar Electronics Inc.
12-28-79

Halmar Electronics Inc.
9-27-74

State Of Ohio
10-26-70

The Comp/Systems
Co. 9-6-84

153722
0.37Ac.
153706
0.3Ac.

153705
8-8-73

153718
0.1Ac.
153721
0.37Ac.
153720
0.37Ac.

153741

153758
7-10-81

153755
7-10-81

191451
17.862 Ac.

14665

153742

W. Wallace Tr. (Afdt)
9-30-82

10465
23.315 Ac.

191451

9-30-82

41.225Ac.

Total 26.012 Ac.

(10.94Ac)

O
18
C

O
18
B

O
18
G

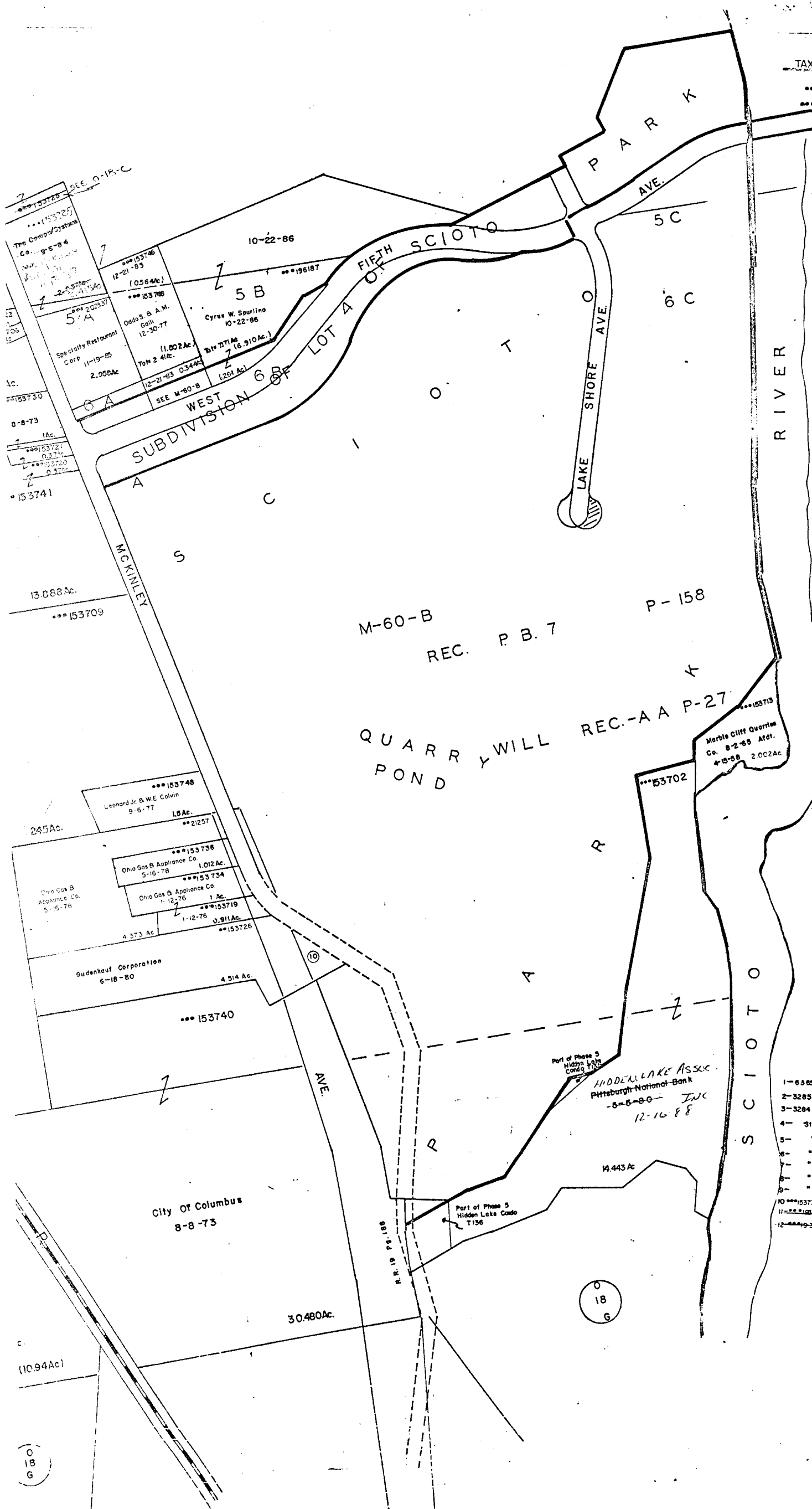
0-18-F FRANKLIN TWP.

SCALE 1"=200'
V.M.S.

E=HIGHWAY EASEMENT

TAXING DISTRICT	DISTRICT CODE
FRANKLIN	140
COLS. SOUTHWESTERN S.D.	570
COLUMBUS	010

H--- HOUSE NUMBERS



0
17
A

0
18
G

1-6385	Merle G. Miller, Norris	9-3-80	0.35Ac.
2-3285	STEVEN B. S.C.H. LEP SIK	4-26-76	0.25Ac.
3-3284	M. & M. Gosh	10-11-79	0.35Ac.
4-	State of Ohio	10-26-70	0.24Ac.
5-	"	"	0.33Ac.
6-	"	"	0.34Ac.
7-	"	"	0.27Ac.
8-	"	"	0.33Ac.
9-	"	"	0.27Ac.
10	153735 Discovery Development Co.	9-2-86	0.303Ac.
11	10254 Male Street Properties Inc.	8-12-83	0.05Ac.
12	10355	"	0.48Ac.