

0  
67  
C

0  
13  
B

0  
67  
C

0  
15  
A

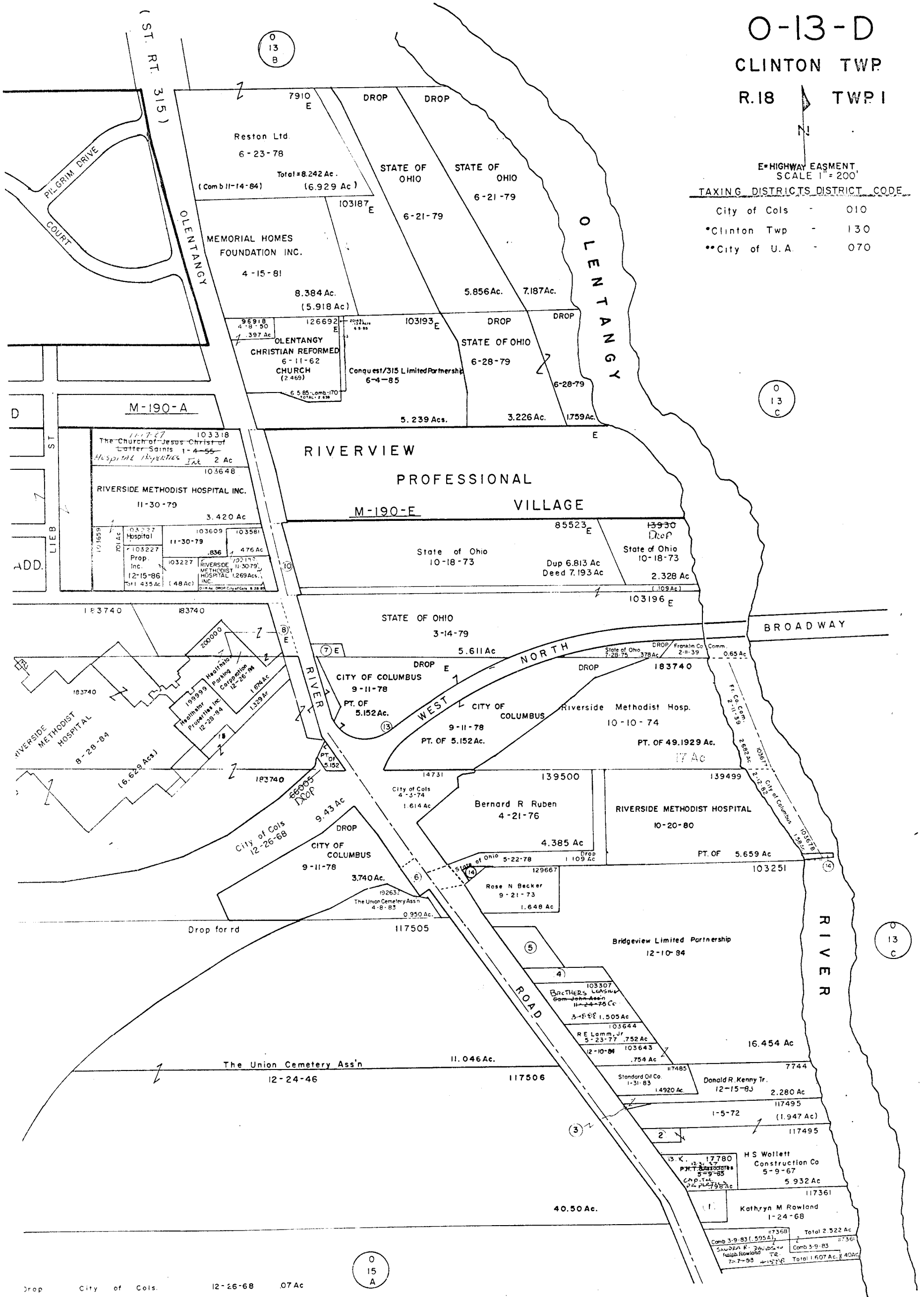
1	117490	McLaughlin Oil Co.	12-15-82	.666 Ac	(13)	Drop	Cit
2	117491	McLaughlin Constr Co	5-9-67	267 Ac	(14)	139499	FIVE
3	81003	Donald R Kenny Tr	12-15-93	.017 Ac	15	183740	"
4	48283	WALTER JEANETTE CLEMAN	3-16-87	.539 Ac	16	202391	US Health
5	87765	Broad Pinewood Co Inc	10-30-58	.962 Ac	17	"	"
6	Drop	City of Cois	12-26-56	.21 Ac			
7	103225	STATE OF OHIO H-WAY	11-27-76	.17 Ac			
8	Drop	St of O	5-7-72	.427 Ac			
10	Drop	St of O.	10-18-73	269 Ac			
11	**3594	City of U. A.	11-1-72	0574 Ac			
12	**4065	City of U. A. Ct of CP 238195	6-27-72	4500 Ac			

O-13-D  
CLINTON TWP  
R.18 TWPI

E=HIGHWAY EASMENT,  
SCALE 1" = 200'

TAXING DISTRICTS DISTRICT CODE

City of Cols - 010  
\*Clinton Twp - 130  
\*\*City of U.A. - 070



O  
15  
A

Drop City of Cols. 12-26-68 07 Ac  
39499 FIVERSIDE METHODIST HOSPITAL 10-20-80 PT. OF 5.659 Ac.  
83740 " " 1-31-85 (0.168 Ac.) Tot= 53.856 Ac.  
02391 US Healthstar Corp 9-16-85 0.2777 Ac  
" " 0.384 Ac Tot= 66.21 Ac.

O-13-D