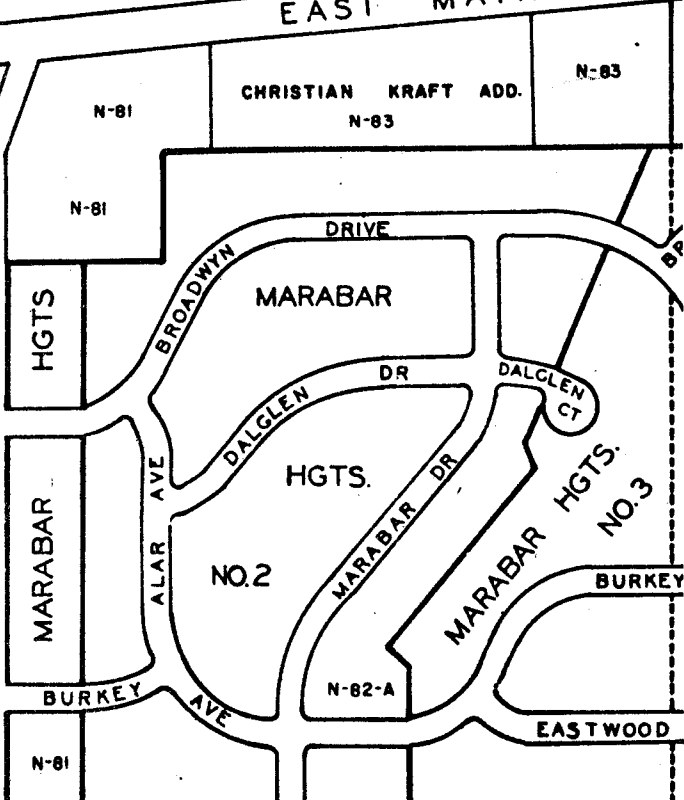
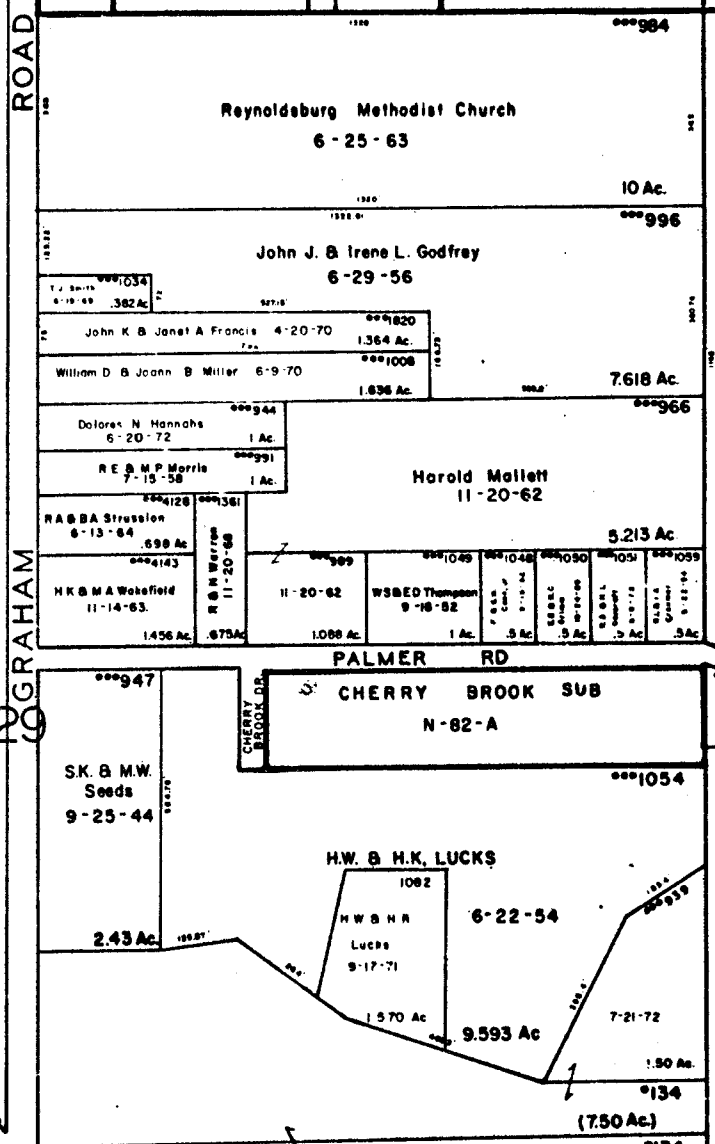


106 F

EAST MAIN STRE



106 F



GRAHAM RD

LIVINGSTON AVE

DROP COUNTY OF FRANKLIN 1-17-74 D.931AC. DROP COUNTY OF FRANKLIN 1-17-74 D.931AC.

Livingston Park Joint Venture 2-16-73 1.465 Ac.

Board of Park Commissioners Metropolitan Park District 10-7-61.

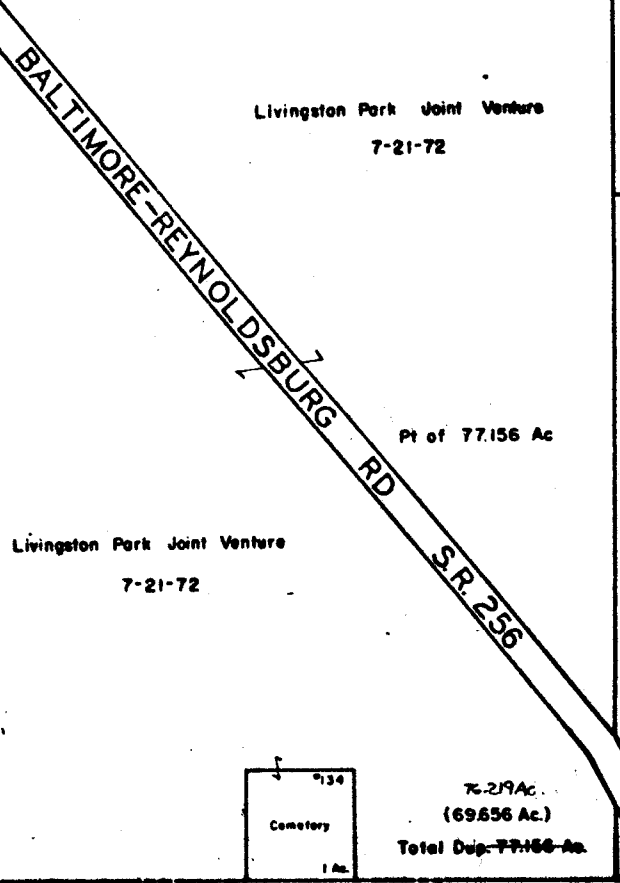
(467 Ac. in House) (42.90 Ac.) Part of 135-655 Ac.

Livingston Park Joint Venture 7-21-72 Pt of 77.156 Ac

Livingston Park Joint Venture 7-21-72

Cemetery 1 Ac.

76.279 Ac. (69,656 Ac.) Total Dup-77,156 Ac.



106 G

O-106-H

TRURO TWP.

R-20 TWP-16

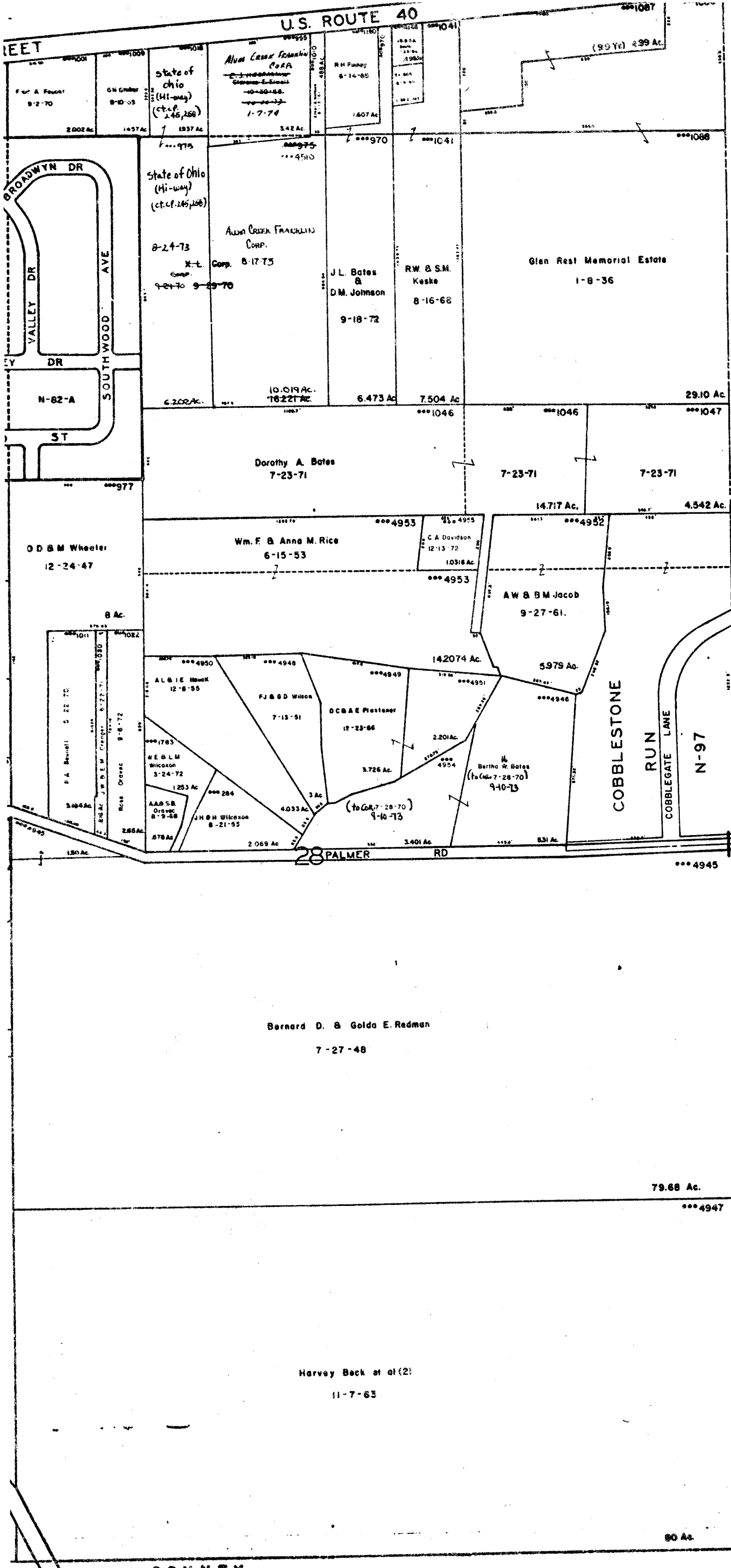


SCALE 1" = 200'

TAXING DISTRICT

***CITY OF REYNOLDSBURG

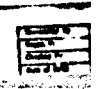
• TRURO REYNOLDSBURG S.I



LICKING COUNTY

O-106-H

4099



COUNTY