

H.P. T.B. WILKS
SURVEYOR
4-21-74 0.238 Ac.

N
253

1-70

State of Ohio Ct. Cp. 220130
8-25-65

100772

35.76 Ac

Ct. Cp. 220130
8-25-65

8-25-65

Tot 40.38 Ac

4.62 Ac

Elizabeth M. Schaaf
6-27-69.

See 0.531 E for residue

11.059 Ac.

PETZINGER

Washington Square
Associates, L.T.D.
1-21-70

WASHINGTON SQUARE

N-252-E

0
53
S

6117
11-5-71

TWP.

APARTMENT HOMES INC.
11-5-71

RECREATION LAKES
Assoc. Inc.
11-5-71

74.114 Ac.
Pt. of 23-850 Ac.
11-5-71

William E. & Jeannette M. Blessing
6-28-51

16.599 Ac

Evelyn B. Jones
6-18-74

8-11-72

Pt. of 64,076 Ac.

54

0
53
E

MARION

APARTMENT HOMES INC.
New Realty Corp.
8-11-72

64,076 Ac.

118451

Pt. of 23-850 Ac.

4

LANCASTER RD

Virginia M. Davidson & Bernice M. Grant
4-29-71

29.315 Ac

REGISTERED LAND TITLE BOOK I PG. 75

APARTMENT HOMES INC.
New Realty Corp.
8-11-72

27.670 Ac.

CREEK

ALUM

City of Cole
0003 Ac.
1-20-70

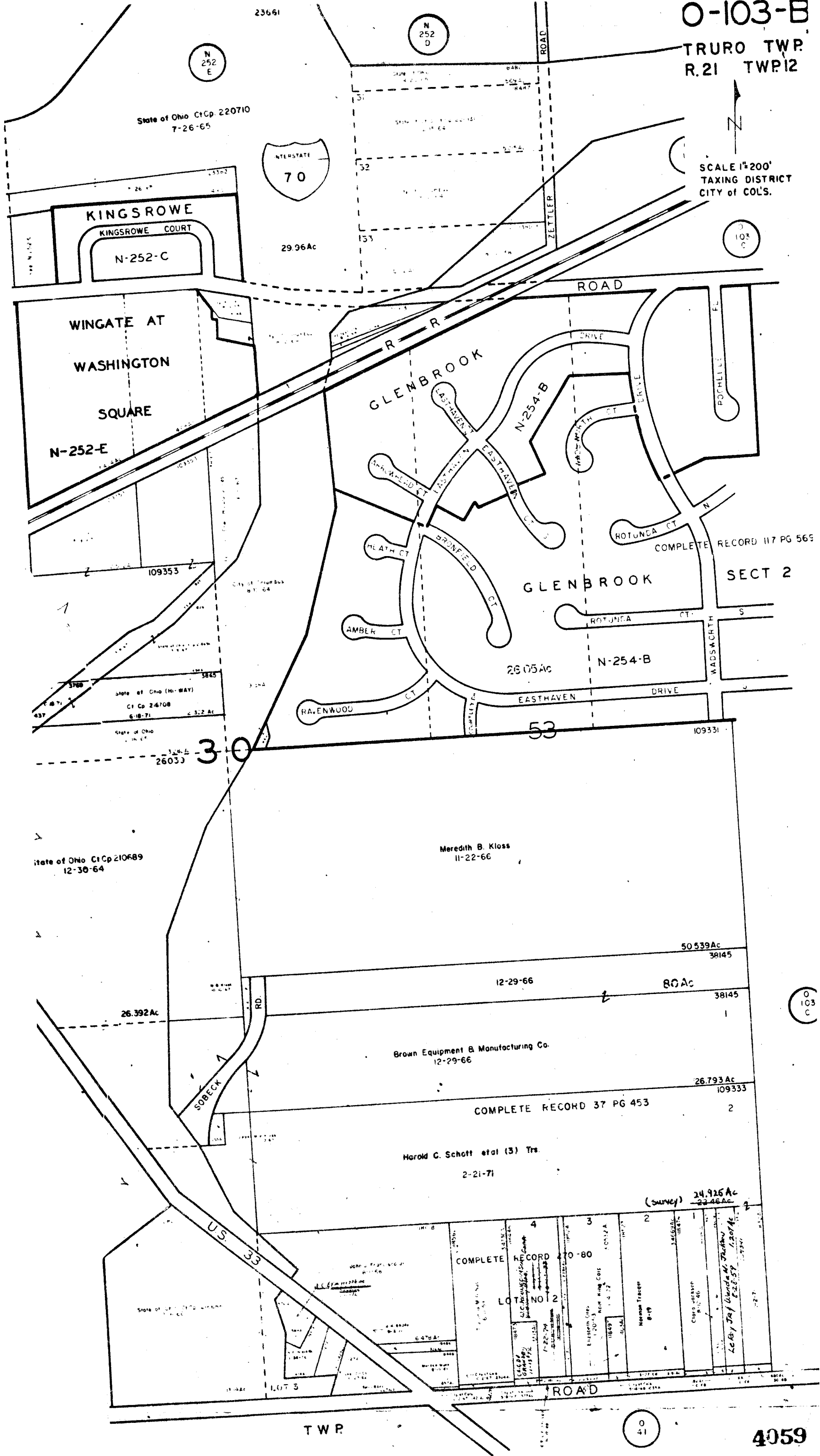
REFUGEE

MADISON

O-103-B

TRURO TWP.
R.21 TWP12

SCALE 1"=200'
TAXING DISTRICT
CITY OF COLS.



O
103
C

O
41

4059