

90
E 6

City Of Columbus
12-23-66
Total = 101.20Ac

*54757
3-18-67
2.318 Ac.

City Of Columbus
4-28-69

Total = 67.692A

4-28-69

ROAD

3026

*154784

City Of Columbus
6-16-67

37.79Ac.

130

130

BUKEY

William E B Evelyn M. Hfner
4-7-72

4-7-72

Total = 129.208Ac.

(23Ac)

(13 Ac)

3974

JOHNSON

PLEASANT

ROAD

0
83

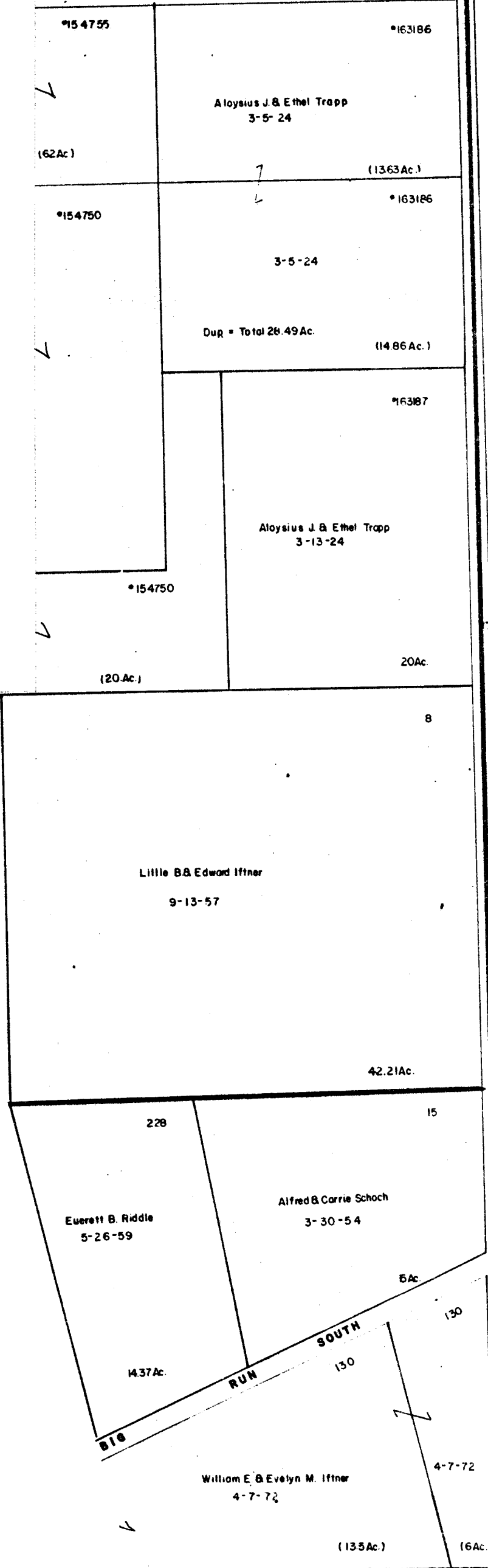
108883

0-96-F
PRAIRIE TWP.



SCALE 1" = 200'
V.M.S.
TAXING DISTRICT
PRAIRIE
*COLS SOUTHWESTERN & D.

0
96
D



0
31
A

13888

0
31
C

0-96-F

Assessed To	11/12
Assessed By	11/12
Assessed On	11/12