

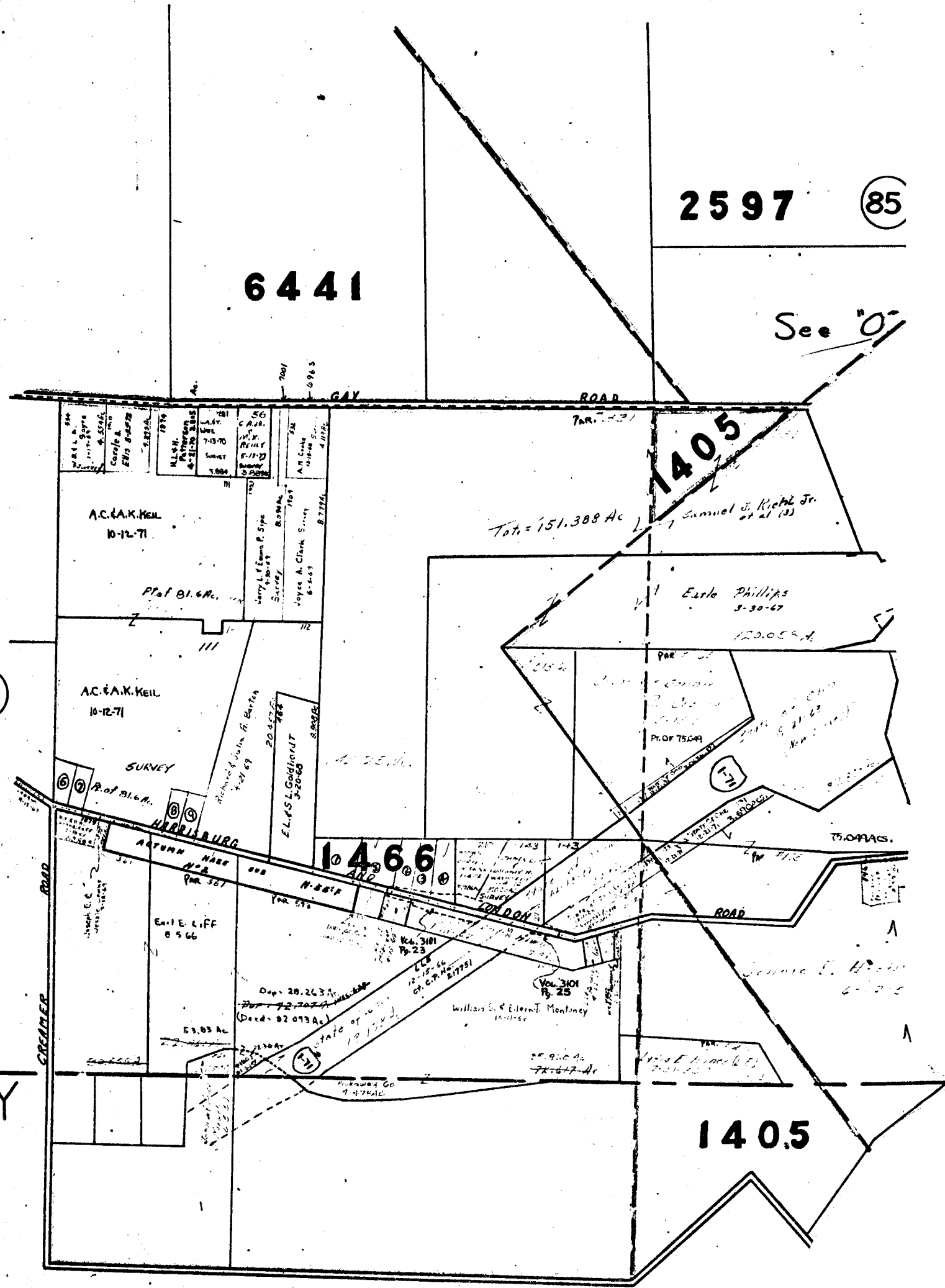
2597 (85)

6441

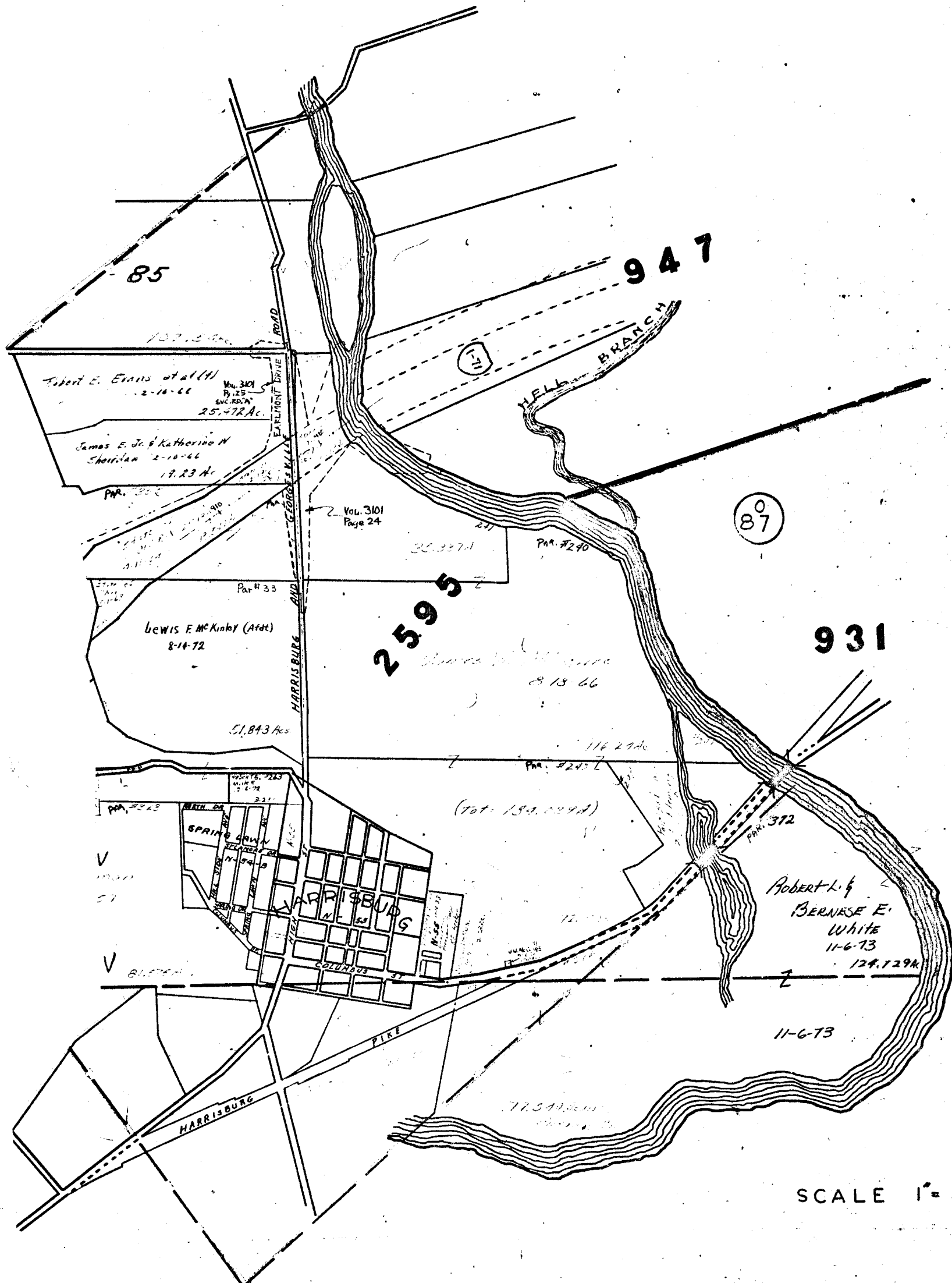
See 'O'

(80)

FRANKLIN
DICKAWAY



①	#356	C.C. & E.M. Hubbard	5-23-52	2.201 ACs.
②	#30	Macl A. & Charles W. Miller	5-23-72	1.50 AC. SURVEY
③	#18	Macl A. & Charles W. Miller	5-23-72	1.50 AC. SURVEY
④	#41	Macl A. & Charles W. Miller	5-23-72	1.97 AC SURVEY
⑤	#602	Macl A. & Charles W. Miller	8-3-78	2.829 AC
⑥	#80	M.T. GALUCCI COMPANY INC.	2-26-73	1.82 AC.
⑦	#75	R.L. & Sanna L. Hood	10-17-73	1.00 AC.
⑧	#90	C.G. & T. Construction Inc.	7-20-73	1.00 AC.
⑨	#113	Earl W. & Kay Green	3-22-74	1.034 AC.



SCALE 1" = 500'