

0  
75  
A

GRANVILLE

DUBLIN

1047

Humble Oil &  
Refining Co.  
3-31-64  
2.242 Ac.

234

Harold H. Voelker, Tr.  
12-28-66

166.576 Ac.

1186

N.E. Folpe, Tr  
11-7-72

Oliver E & Shirley L. Rowe  
7-1-65

6.226 Ac.

45 Ac.

PLAT BOOK 3 PAGE 96 SURVEYORS OFFICE

27

Andrew C. & Claudia B. Harrison  
9-28-45

(50.61 Ac.)  
Total = 75.61 Ac.

HAMILTON ROAD

T O W N S H I P

B L E N D O N

846	A. & M. Tison 10-16-68	2.367 Ac.
830	Lloyd P. & Betty J. Terry 11-18-61	1.633 Ac.
889	I. & K. L. Gates 5-16-60	2 Ac.
1077	M. E. & J. E. Osborne 6-23-65	1.956 Ac.
173	Melvyn & Norma Connitt 12-21-64	1.943 Ac.
808	Melvyn T. Connitt 6-9-63	2 Ac.
853	Walter C. & Carolyn J. Harper 5-14-65	1.971 Ac.
764	Isam T. Inc. Ronald & Norma G. Mall 9-24-69 5-24-73	2 Ac.
763	Willard O. & Mary Kingery 10-25-63	2 Ac.
858	M. K. & K. Realty Inc. 1-31-68	8 Ac.

525  
3 Ac.  
Doris A. Van Bibber  
2-23-72

(25 Ac.)

2-3-48

(25 Ac.)

6-19-56

(14 Ac. & 40 Poles)

707

6-19-56

THOMPSON

ROAD

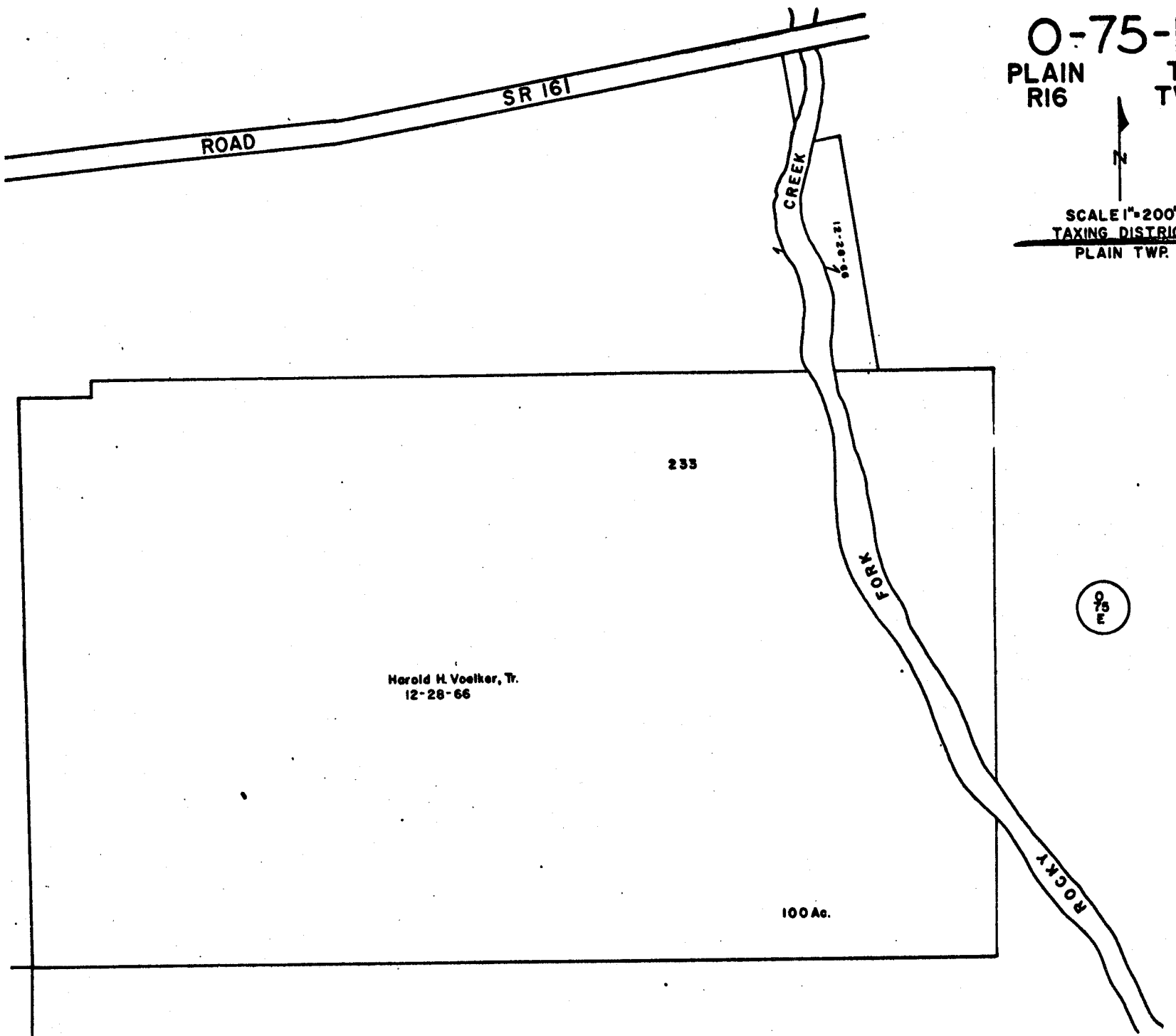
3803

0  
75  
B

O-75-D  
PLAIN R16 TWP  
TWP.2



SCALE 1"=200'  
TAXING DISTRICT  
PLAIN TWP.



The DeLong Corp. 6-19-56	Total = 104 Ac. (37 Ac.)	455	12.203 Ac. (2 Ac.)
		Arthur R. & Verona A. Rountt 6-28-71	12-17-54
		369	(11.92 Ac.) Total = 13.92 Ac.
		Charles R. & Janice M. Graham 12-17-54	

70 W5

- ① 308 William G. Dodson et al (4) 4-14-71 .8 Ac.
- ② 237 G.H. Conrad 2-18-64 .787 Ac.

3804

O-75-D  
PLAIN R16 TWP.2