

0  
73  
B

TAYLOR

ESTATES

148

262

Charles E. Jr. & Dorothea E. Easter  
1-28-43

8 Ac.

ALICE DRIVE

Robert L. Taylor Construction & Development Corp.

2-22-73

29.847 Ac.

N-52-D

JENNETTE DRIVE

WALNUT

GARDENS

N-52-D

WALNUT

601	1088
D.L. Schleppe 3-30-72 1.313 Ac.	R.F. Schleppe 8-23-69 1.313 Ac.

196

363

13

14

Bertha R. Schleppe  
3-27-72

Gertie A. Schleppe  
12-22-31

77.374 Ac.

62 Ac.

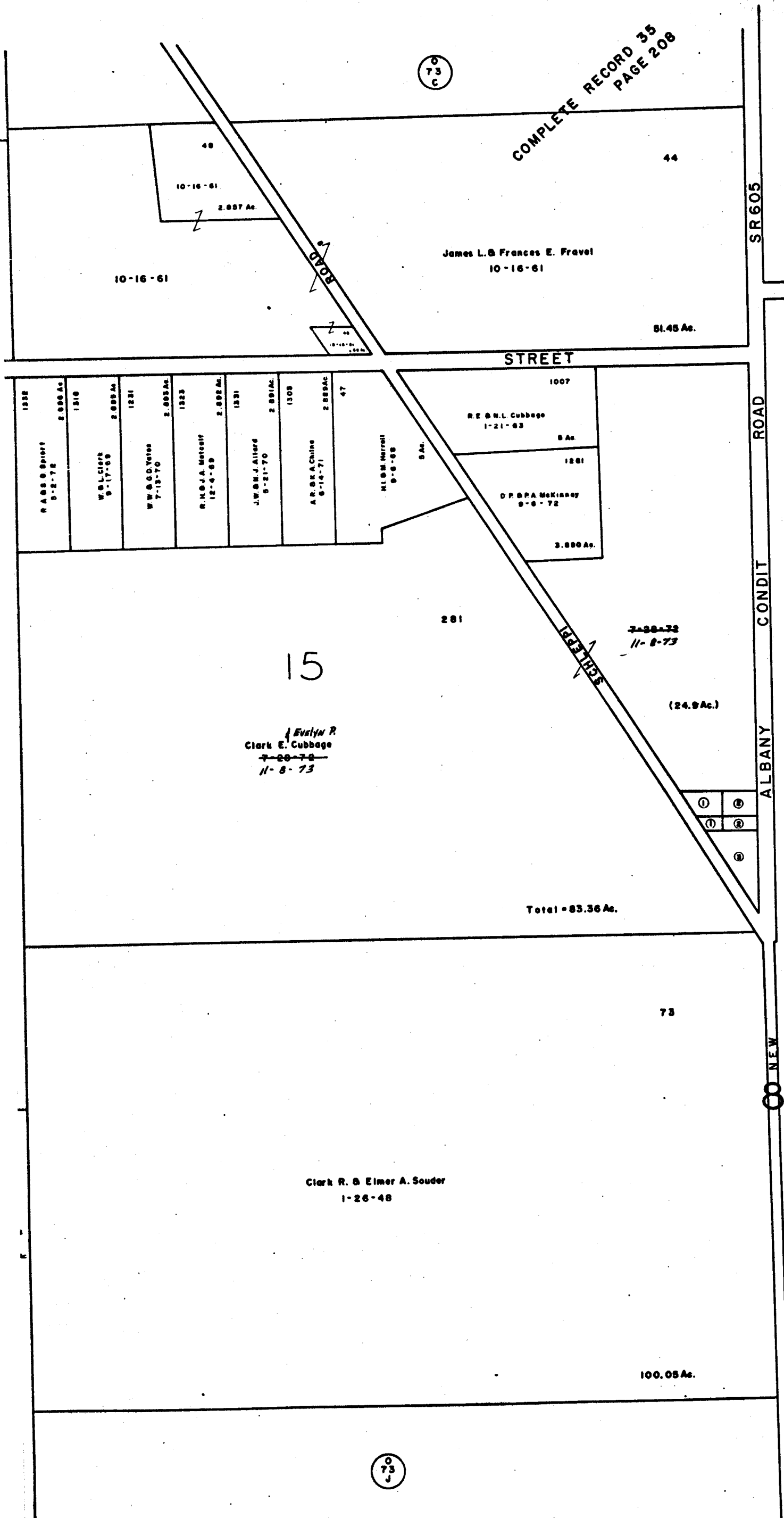
- ① 482 D.A. & F.W. Ciesinger 3-18-48 (.321 Ac.) 11-16-60 (.135 Ac.) Total .456
- ② 480 D.A. & F.W. Ciesinger 7-28-58 (.321 Ac.) 11-16-60 (.169 Ac.) Total .490
- ③ 270 D.A. & F.W. Ciesinger 4-26-67 1.284 Ac.

0  
73  
J

0-73-T  
PLAIN TWP.  
R16 TWR2

SCALE 1"=200'  
TAXING DISTRICT  
PLAIN TWP.

COMPLETE RECORD 35  
PAGE 208



73  
C

74

74

73  
J

Evelyn R.  
Clark E. Cabbage  
~~7-20-72~~  
11-8-73

James L. & Frances E. Pravel  
10-16-61

R.E. & N.L. Cabbage  
1-21-63

D.P. & P.A. McKinney  
9-8-72

Clark R. & Elmer A. Souder  
1-26-48

Total = 83.36 Ac.

73

100.05 Ac.

3768

0-73
