

0
72
C

WORTHINGTON

CLUBVIEW

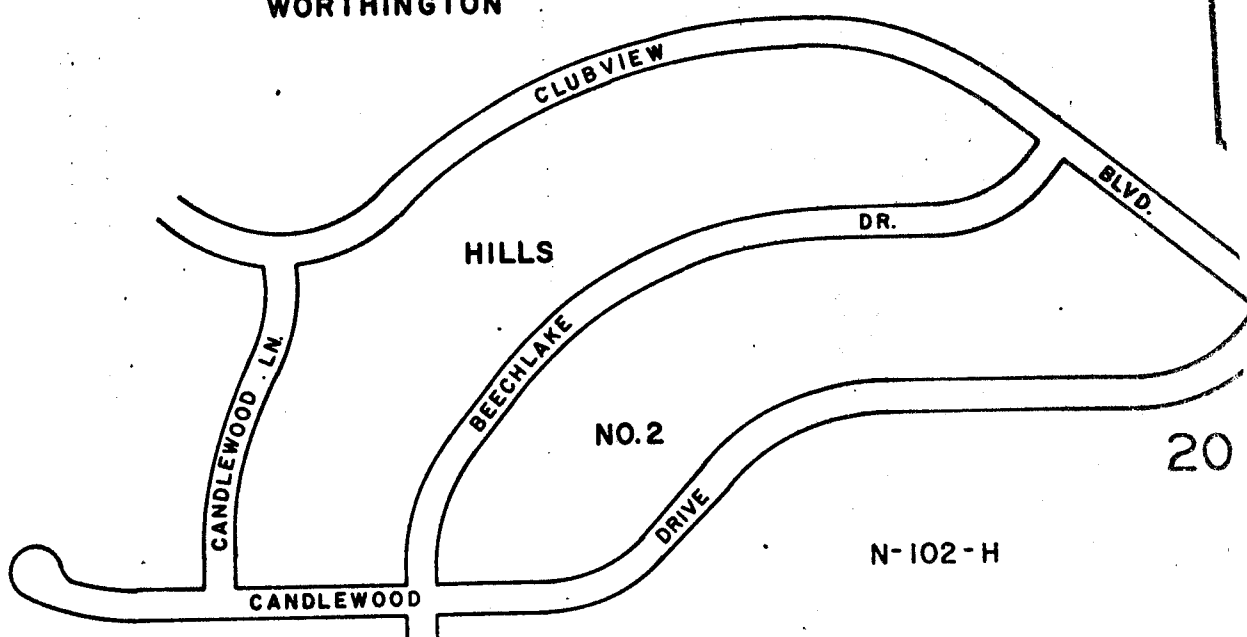
HILLS

NO. 2

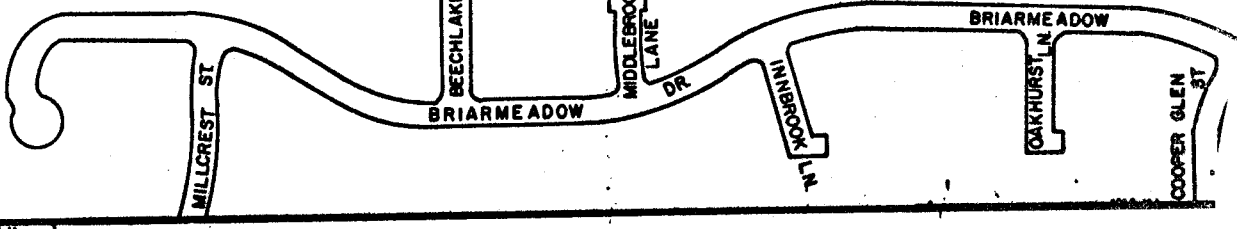
20

N-102-H

0
72
E



WORTHINGTON HILLS SEC



John C.

2-19-70 1.561 Ac

2-19-70

2-19-70

19.452 Ac

10 Ac

HARD

John C. & Joseph C. Antrim
2-19-70

0
72
E

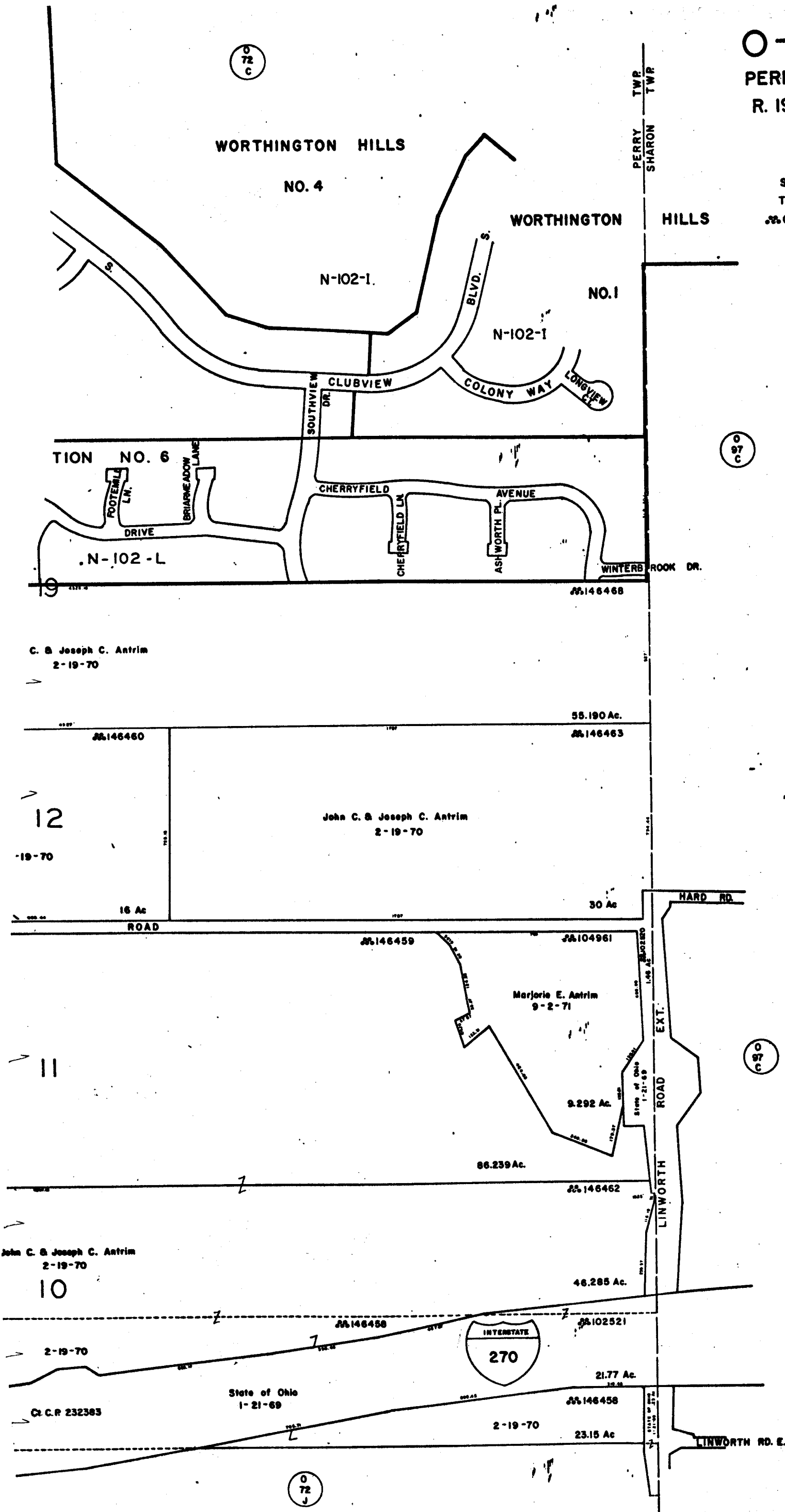
John

0
72
J

0-72-F

PERRY TWP
R. 19 TWP. 2

SCALE 1" = 200'
TAXING DISTRICT
COLS.-WORTH. S.D.



072 C

097 C

050

072 J

0-72-3748
