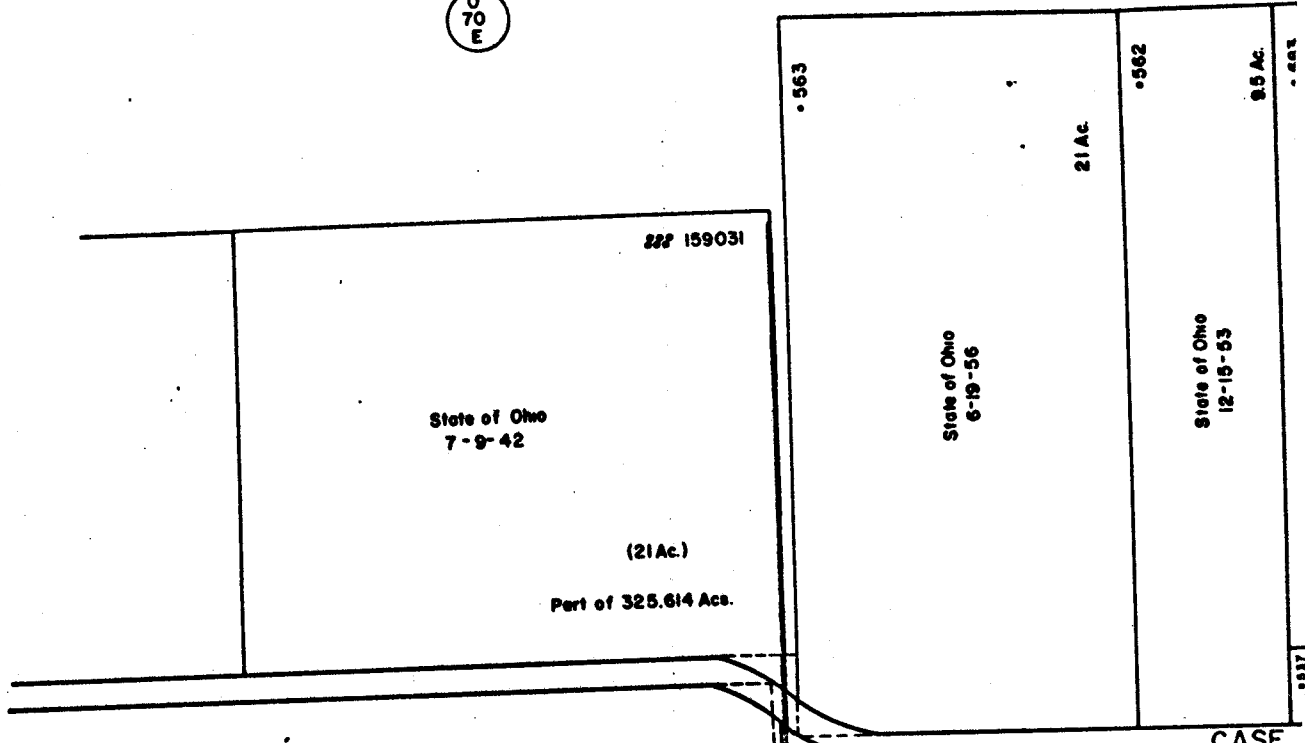


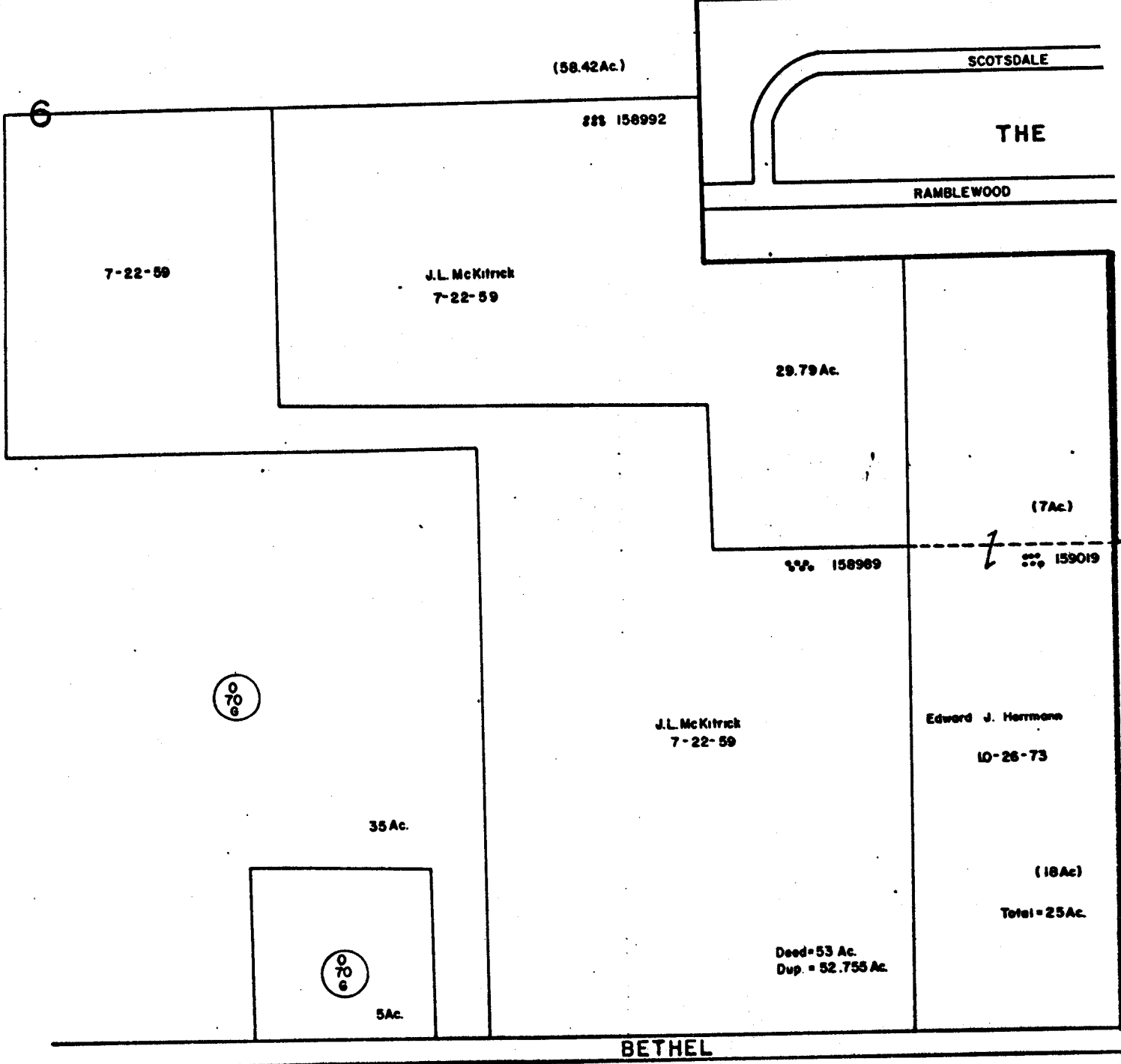
0
70
E



0
70
G

CASE

L.H.B. Miller 6-15-53	L.O.S.M. Co. 6-15-53	L.H.B. Miller 6-15-53	W.V. B.B. Miller 7-28-53	J.E. D. J. King 10-26-54	J.M.C.A. Smith 10-3-53	Paul Kemp 11-6-61
287Ac	287Ac	287Ac	287Ac	287Ac	287Ac	287Ac

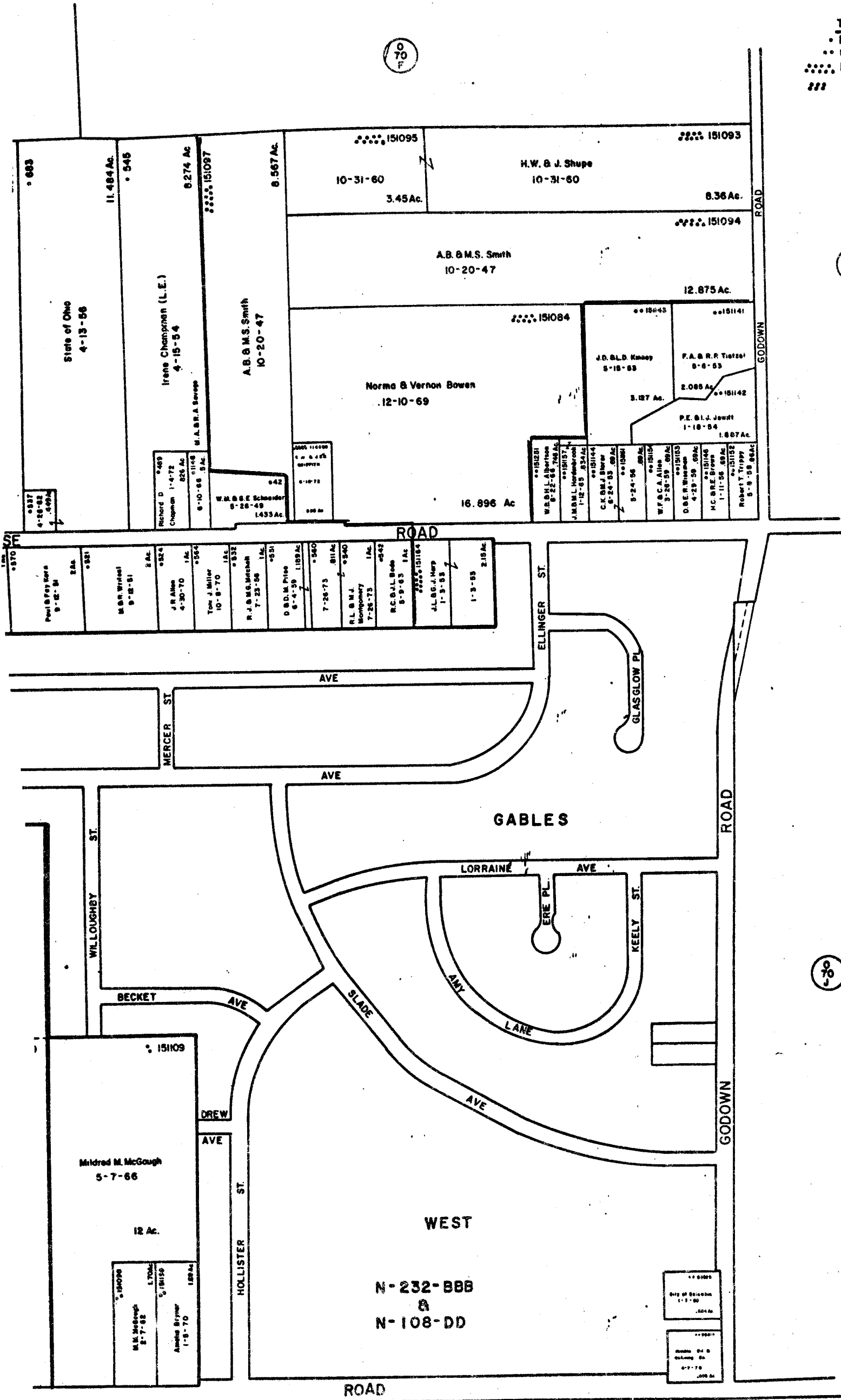


0
70
G

0
70
G

O-70-H
 PERRY TWP.
 R19 TWP2

SCALE 1"=200'
 TAXING DISTRICTS
 • PERRY-WASH. SD.
 •• CITY OF COLUMBUS
 •••• PERRY-COLS. SD.
 ■■■ COLS WASH S.D.



80

80

80

80

3722
 O-70-H