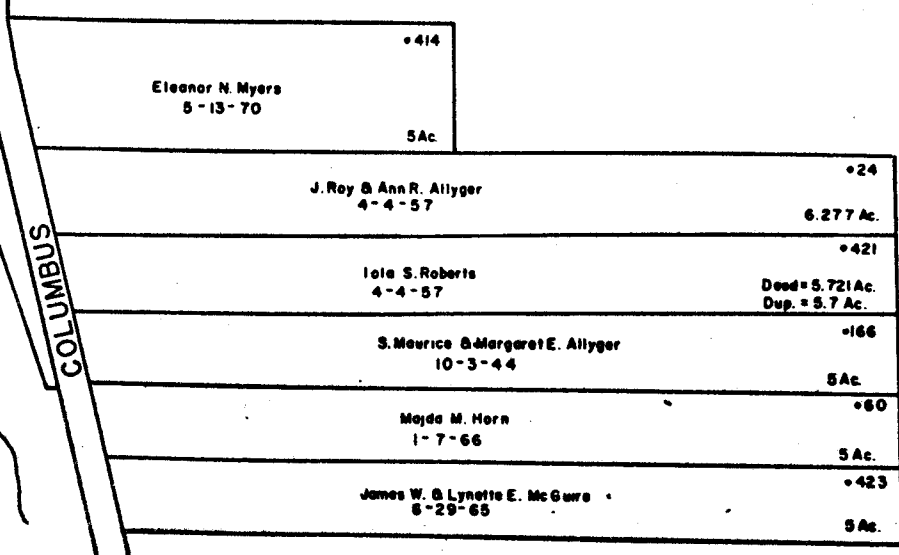
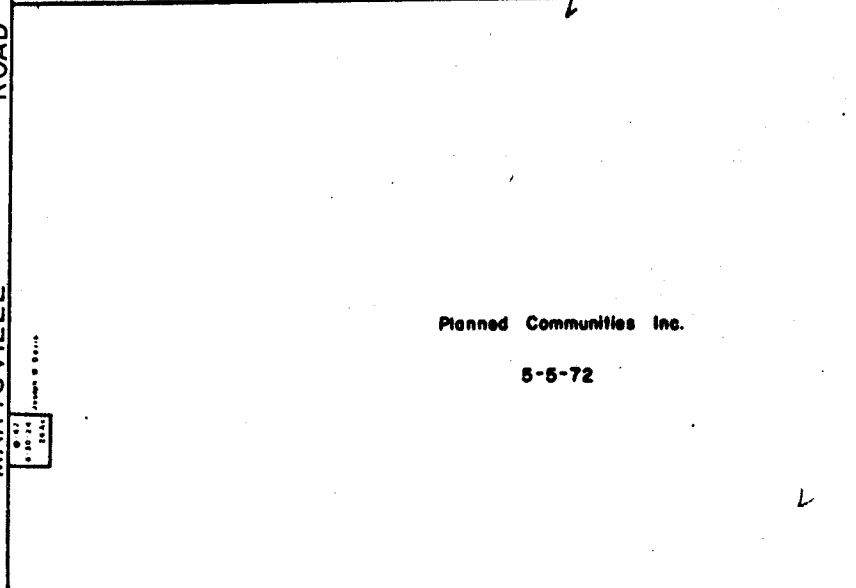
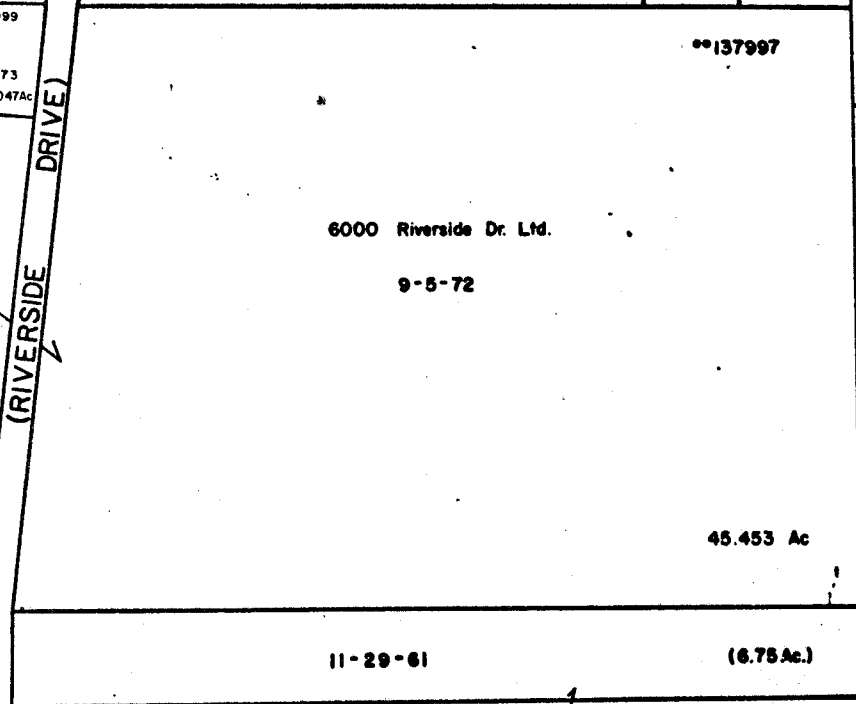
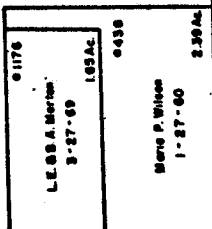
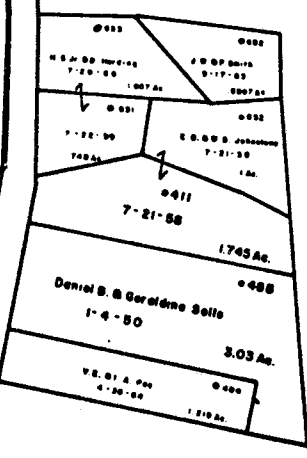


888533	John E. Vargo Inc 4-24-69 8.1043 Ac	888535	2.203 Ac	888537	N.W. & J.L. Rygo 8-19-47 2.908 Ac	888539	2.908 Ac	888541	2.908 Ac	888543	2.908 Ac	888545	2.908 Ac	888547	2.908 Ac	888549	2.908 Ac	888551	2.908 Ac	888553	2.908 Ac
--------	-------------------------------------------	--------	----------	--------	-----------------------------------------	--------	----------	--------	----------	--------	----------	--------	----------	--------	----------	--------	----------	--------	----------	--------	----------



Acme I
4-19-

**138000

Total Dup. = 151.953 Ac.

0
69
A

0-69-B
PERRY TWP
R19 TWP2



SCALE 1" = 200'
TAXING DISTRICTS
• PERRY - WASH. SD
• PERRY - DUBLIN CORP
•• CITY OF COLUMBUS

ROAD		222336	212545
2.651 Ac	3.058 Ac		12.083 Ac
• 30		Acme Holding Co. 4-19-66	• 398 18.808 Ac
53.999 Ac	Paul E. Garner ET.AL. (4) 2-11-70	Acme Holding Co. 4-19-66	• 62 30.891 Ac
6000 Riverside Dr. Ltd. 9-5-72	•• 137998	University City Inc. 4-3-73	• 399 30.891 Ac
20Ac.		R.D. Stone etal (4) 1-25-72	• 16 10.057 Ac

ROAD
SAWMILL

0
70
B

3 PLAT BOOK 3 PAGE 139 COUNTY SURVEYORS OFFICE

• 37
Acme Holding Co. 4-19-66
Deed = 108.579 Ac. Dup. = 108.22 Ac.

0
69
C

0-69-B
3700