

BETHEL

• 526
Meadow Park Church of God, Inc.
7-30-68
Deed = 11,910 Ac.
Dup. = 11,898 Ac.
• 688
B.J.S.M. Corrocco
3-12-85
• 608
M.H.P. Wilburn
6-5-61
3 Ac.

• 561
John L. McKittrick
7-22-59
28.37 Ac.

••••• 151077
Arthur H. Dierker
7-13-38
25.72 Ac.

N-98-A
HENDERSON
WOODVIEW PLACE
HEIGHTS ADD.
N-98-A
••••• 3233
C.W.B.T.S. Ashton
4-7-67
1.61 Ac.
••••• 381
D.M. (S.S. 575) W
F.M. (S.S. 575) W
10-18-72 Total 2.097

••••• 102595
S. Robert Davis & Co.
3-28-68
24.215 Ac.

••••• 319
R.H. Snavelly
3-21-52
3.959 Ac.
••••• 102592
3-28-68
.807 Ac.
••••• 1405
S.R. Davis Co.
3-28-68
2.622 Ac.
••••• 1407
C.E. & E. Goodell
9-28-64
1.48 Ac.
••••• 102595
9-28-64
.83 Ac.
••••• 1406
R.E. & M.L. Herbert
9-18-65
1.003 Ac.
••••• 102595
9-18-65
.945 Ac.

DAVIS HENDERSON
COUNTRY CORNER DRIVE

H.E. CHAPMAN'S SUBDIVISION
N-232
GREEN ACRES DRIVE
CHEVY CHASE AVE.

ROAD SUBDIVISION NO. 2
N-94-DD
••••• 11734
Pure Oil
Co.
14-66
756 Ac.
••••• 11018
••••• 11019
••••• 11020
••••• 11021
••••• 11022
••••• 11023
••••• 11024
••••• 11025
••••• 11026
••••• 11027
••••• 11028
••••• 11029
••••• 11030
••••• 11031
Dierker Investment Co.
10-13-70
1.778 Ac.

ARLINGTON CENTRE
N-94-H
ARLINGTON CENTRE
DIERKER ADDITION
DIERKER ROAD

••••• 11343
Board of Education
of Upper Arlington
12-31-57
5.204 Ac.

OLD COACH
NORTH COACH RD.
SQUARE
N-94-H
MACKENZIE DRIVE
DIERKER RD.

0
68
A

0
68
C

0
68
D

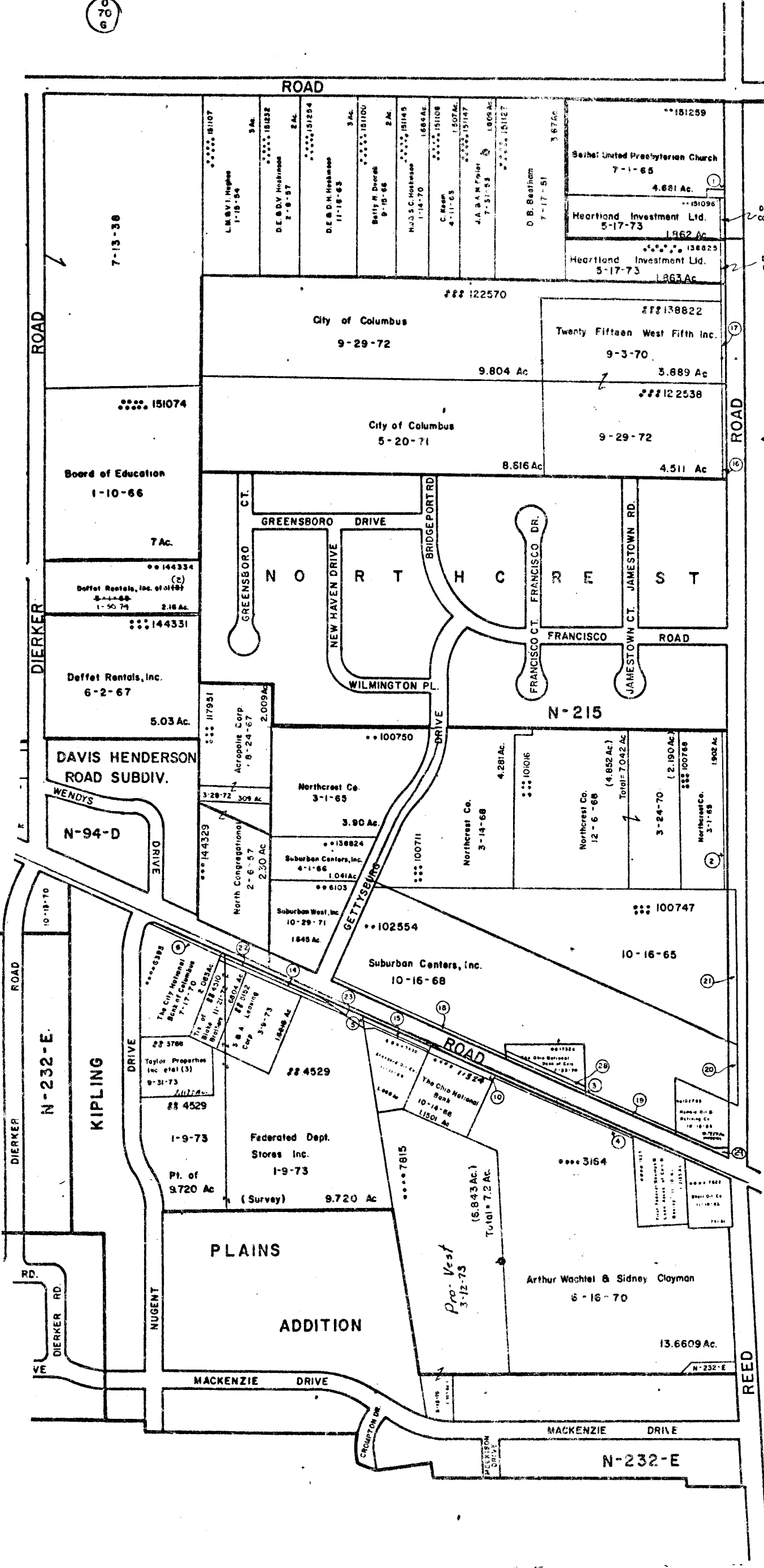
O-68-B

PERRY TWP.
R.19 TWP.1



SCALE 1" = 200'
TAXING DISTRICTS

- PERRY-WASH. SD.
- CITY OF COLS.
- COLS. UPPER ARLINGTON
- UPPER ARLINGTON
- COLS. WASH. SD.
- PERRY TWP.
- PERRY-COLS. SD.



- 1 •• 122622 Columbia Gas of Ohio 11-19-71 .089 Ac.
- 2 DROP City of Columbus 12-7-70 .498 Ac.
- 3 DROP City of Columbus 9-3-70 .272 Ac.
- 4 DROP City of Upper Arlington 3-3-67 .118 Ac.
- 5 DROP City of Upper Arlington 3-3-67 .0867 Ac.
- 6 DROP City of Upper Arlington 7-17-70 .0620 Ac.
- 7 City of Columbus 50x178' DB 2819 P6178
- 8 DROP City of Columbus 9-9-69 .624 Ac.
- 9 •••• 3350 City of Upper Arlington 4-23-71 .107 Ac.
- 10 DROP City of Cols 10-2-73 .295 Ac.
- 11 •••• 2263 Bd. of Education of Upper Arlington 12-28-71 .001 Ac.
- 12 ••• 113194 DL Hobson & M.A. Levine Trs. 7-14-72 .702 Ac.
- 13 ••• 144333 North Congregational Church 2-6-57 .362 Ac.
- 14 •••• 3797 City of Upper Arlington 3-27-72 .1185 Ac.
- 15 •••• 4241 " " 9-18-72 .148 Ac.
- 16 ••• 122566 City of Cols. 9-29-72 .293 Ac.
- 17 ••• 122568 " " 9-29-72 .307 Ac.
- 18 •• 11692 " " 6-7-73 .144 Ac.
- 19 •• 11764 " " 6-7-73 .386 Ac.
- 20 •• 11738 " " 6-7-73 .143 Ac.
- 21 ••• 124182 Southwest Franklin Inc 12-29-72 .353 Ac.
- 22 •••• 4528 City of Upper Arlington 1-9-73 .144 Ac.
- 23 •••• 4538 City of Cols. 1-10-73 .078 Ac.
- 24 ••• 105335 Robert S. Davis 4-19-73 .367 Ac.
- 25 ••• 105986 " " 4-19-73 .390 Ac.
- 26 ••• 105353 " " 4-19-73 .420 Ac.
- 27 ••• 144328 " " 4-25-67 1.422 Ac.
- 28 DROP City of Columbus 10-2-73 .065 Ac.
- 29 DROP City of Columbus 10-5-73 0.479 Ac.

3691

O-68-B

Checked by	RAA
Checked by	RAA
Drawn by	RAA