

69

BETHEL ROAD

ROAD

ROAD

City of Columbus

D.B. 314 P.548

Point of 9.05 Ac

Nellie M. Yousey 5-24-54 1.573 Ac

5-24-54 1.138 Ac

S.D. & V.D. Haverich 7-27-71 1.129 Ac

F.L. & A.A. Ely 12-18-69 1.119 Ac

Marguerite Anderson 4-9-51 1.110 Ac

Mary L. Wiles 1-26-68 1.223 Ac

Marguerite M. Poole 6-15-50 1.571 Ac

R.W. McClure 10-27-38 3.84 Ac

John L. McKittrick 4-29-65 19.661 Ac

John L. McKittrick et al (3) 3-5-65 5.471 Ac

A.E. & D.S. Voelkel 6-22-71 2.529 Ac

5-27-52 4.22 Ac

5-21-69 2.839 Ac

155

182

1129

183

187

188

187

187

J.R. & S.A. Pugh 1-5-73 3 Ac

D.B. & A. VanAlnum 7-11-66 5 Ac

(1.513 Ac)

10-5-56

W. Herbert Bixby 10-5-56 5.465 Ac

Jos. W. Bullis 2-21-62 5.09 Ac

Howard R. & Mary W. Schantz 6-26-53 4.480 Ac

Chancery Rec. 10-288

Fredrick A. Wirthman Trs. et al (3) 10-11-68 29.579 Ac

F. Zschack 5-24-60 2.053 Ac

HENDERSON

MARYSVILLE CITY of Columbus

D.B. 314 P.581

ORCHARD

RUSHMORE

ORCHARD

RUSHMORE RIDGE

SUB.

N-232

COMPLETE REC. 104-532

Helen J. Flory 7-22-66 2.70 Ac

M.D. & L.I. Spain 4-21-64 2.688 Ac

N.W. United Methodist Church 12-31-68 4.456 Ac

Howard D. & Grace W. Schneemich 9-30-59 6.806 Ac

J.R. & L.G. Wohrley 1-10-67 1.772 Ac

N.W. Evangelical U.B. Church 10-27-64 4.14 Ac

Lewis T. Franklin 10-26-62 1.057 Ac

Ruth J. Wilson 10-8-71 1.2 Ac

D.L. & E. Stevens 7-3-64 .93 Ac

F.J. Grant III 11-13-65 1 Ac

W.H. B.R.C. MINK 6-14-72 1 Ac

Wiley W. Naive 5-5-42 4.13 Ac

Stanley L. & K. Farnon 10-18-62 7.61 Ac

D.E. & E.B. Hilditch 3-10-72 7.67 Ac

Emily M. Kultcher 2-2-44 8.622 Ac

W.B. & W. Ireland 4-2-68 1.132 Ac

D.D. & C.M. McCormick 4-24-69 1.084 Ac

Acrol & Carol T. Damon 10-18-67 9.154 Ac

Jos. & K. Marlette 2-18-66 1.615 Ac

Jos. M. Decapua 11-7-68 7.77 Ac

Eleanor Hoover et al (4) 3-12-71

NORWICH

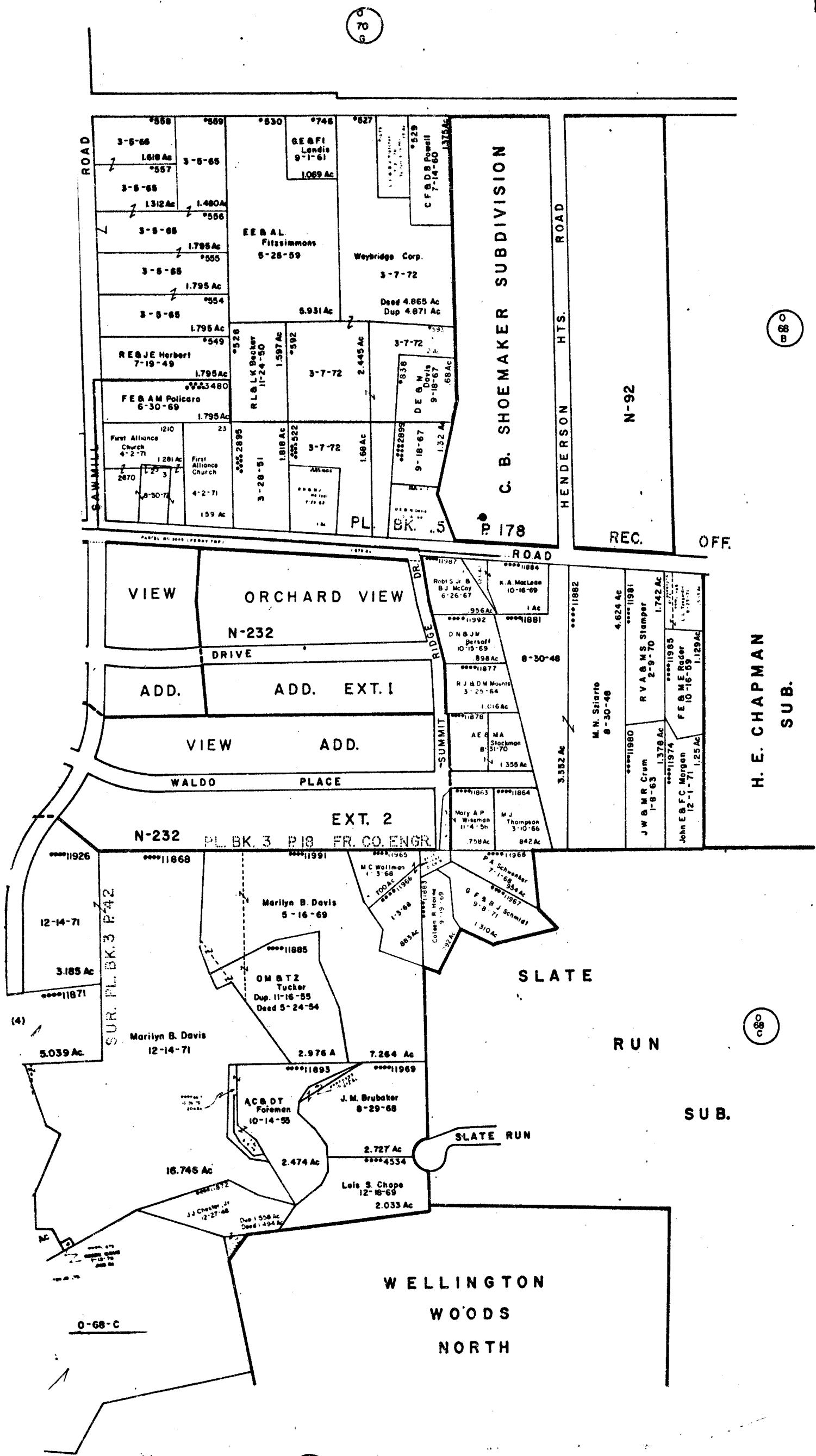
RIVER

TWP

61
88

SCALE 1"=200'

TAXING DISTRICT
PERRY TWP
PERRY WASH. S.D.
UPPER ARLINGTON



70

80

80

68
