

01642

010

010

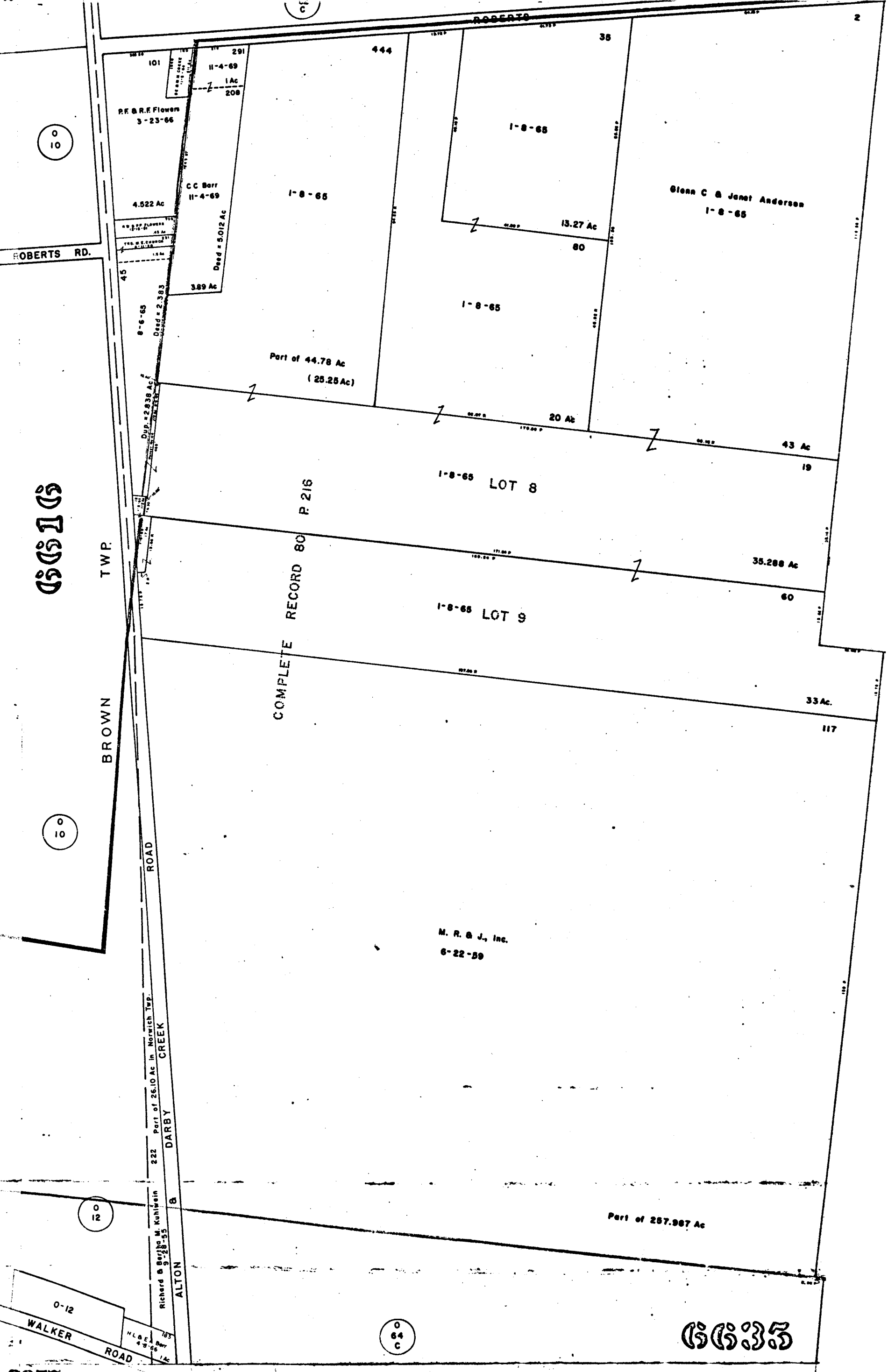
010

010

012

064 C

0635



ROBERTS RD.

BROWN TWP.

ROAD

DARBY CREEK

ALTON

WALKER ROAD

ROAD

R.F. & R.E. Flowers
3-23-66

C.C. Barr
11-4-69

Glenn C. & Janet Anderson
1-8-65

Part of 44.78 Ac
(25.25 Ac)

1-8-65 LOT 8

1-8-65 LOT 9

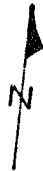
M. R. & J., Inc.
6-22-59

Part of 257.987 Ac

3657

O-64-A

NORWICH TWP



SCALE 1" = 200'

V. M. S.

TAXING DISTRICT

NORWICH TWP

O
64
B

2742

Eugene & Ada A Bohlen
12-9-68

12-9-68

Ruth Heisel & Ohio National Bank (Trs.)
2-17-70

Part of 88.487 Ac
75.

493

30.513 Ac

116

Eugene & Ada A Bohlen
12-9-68

22.370 Ac

Virgil & Helen E. Hart
9-18-47

27.892 Ac

ST. 6
12-18-50
1.238 Ac
John & Helen Will

217

217

65 12

Frances L. & Raymond Thompson
12-9-68

12-9-68

O
64
B

SPINDLER ROAD

139 Ac

2738
S.C. & M.J. Zeller
7-18-69
1 Ac

O-64-A

3658

O
64
B