

W A S H I N G T O N

60
A

63356

0
110

0
110

208
Kermit C. & Dorothy Greer
2-2-44
46659 Ac.

98
Juanita J. Huffman
3-22-68
4.762 Ac.

1917
Ethan R. Carter
7-25-86
2 Ac.

128
Anne L. Schetz
10-28-69
1.27 Ac.

332
Anne L. Schetz
10-28-69
2.67 Ac.

129
Anne L. Schetz
10-28-69
4.6 Ac.

Total = 46.71 Ac.
(20.83 Ac.)

Violet M. Riebel
1-26-73

RECORDERS P.B. 3 PAGE 347
SURVEYORS P.B. 3 PAGE 14

30453

City National Bank Trust Co. TX.
ETAL (3)
Roger H. Ewing Tr. ETAL (3)
~~5-8-71~~
11-2-73

79.47 Ac.
Joseph L. Leppert
4-7-32
20 Ac.

Violet M. Riebel
2-16-73

Violet M. Riebel
10-15-69

Violet M. Riebel
2-16-73

Joseph L. Leppert
4-7-32

19.339 Ac.

Margaret & Carl C. Smith
7-20-50

12-6-73
12-19-68
2-19-65
7-18-80
6-27-40

HARRY J. DeJure Westmac
L. C. Keator
2.535 Ac.
G.E.B.A.E. Keator
2.535 Ac.
R.J.B.M.F. Keator
2.562 Ac.
G.L.B.A.C. Keator
1.998 Ac.

COMPLETE RECORD 191 PAGE 370

Glenn & Dorothy L. Young
4-30-54

Dunbar Industries, Inc.
3-23-60

HILL
TAYLOR - LANE
ESTATES
A VERY
SECOND

27.6815 Ac.

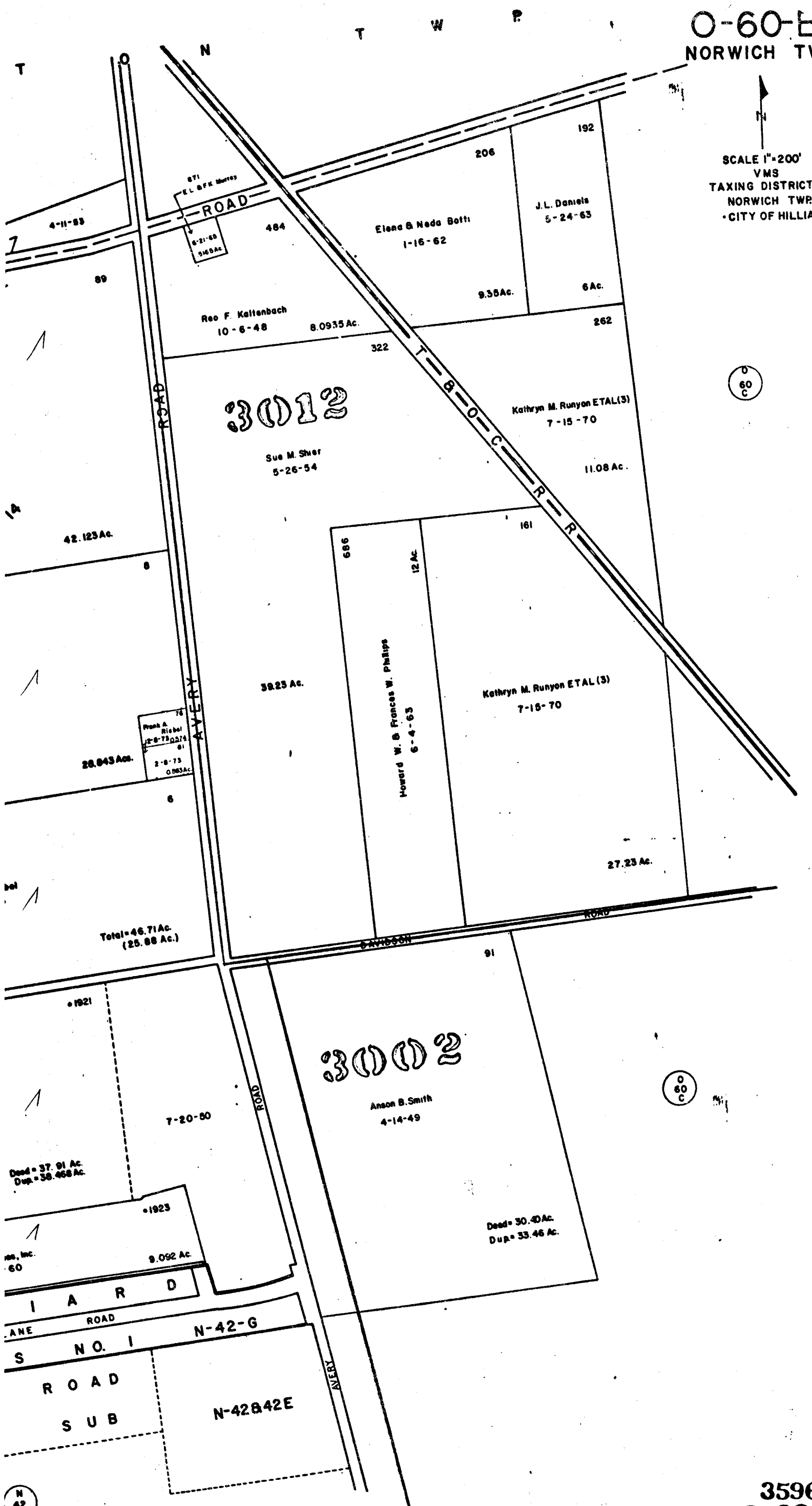
0
60
A

3595

N
42
E

O-60-B
NORWICH TWP.

SCALE 1"=200'
VMS
TAXING DISTRICTS
NORWICH TWP.
CITY OF HILLIARD



3012

Sue M. Sher
5-26-54

Kathryn M. Runyon ETAL(3)
7-15-70

3825 Ac.

Howard W. & Frances W. Phillips
6-4-63

Kathryn M. Runyon ETAL(3)
7-15-70

3002

Anson B. Smith
4-14-49

Dead = 37.91 Ac.
Dup = 38.468 Ac.

1923

9.092 Ac.

Inc. Inc.
60

I A R D

ANE ROAD

S N O. I N-42-G

R O A D

S U B

N-42842E

N
42
E

0
60
C

3596
O-60-B

