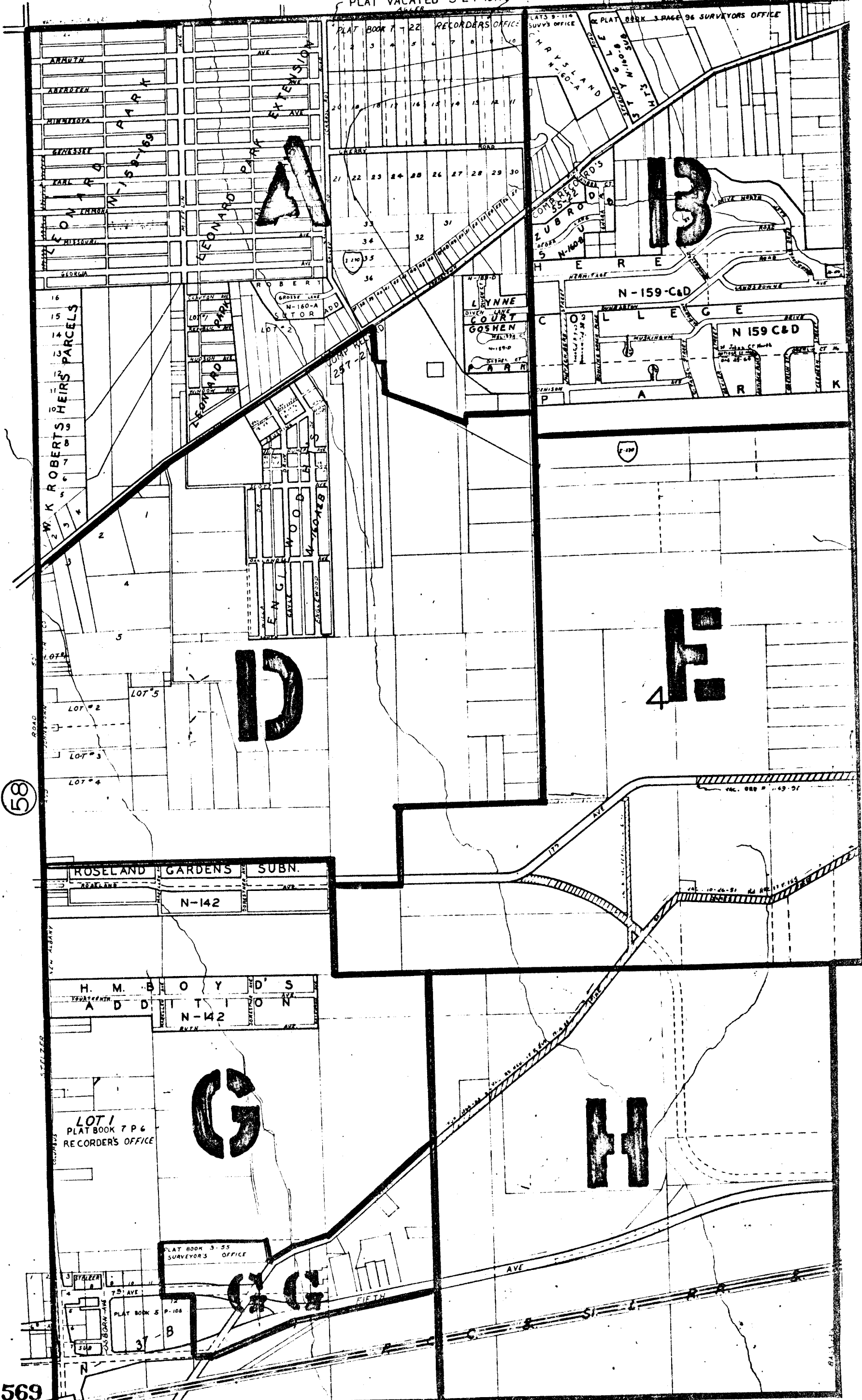


PLAT VACATED 5-24-1917

57

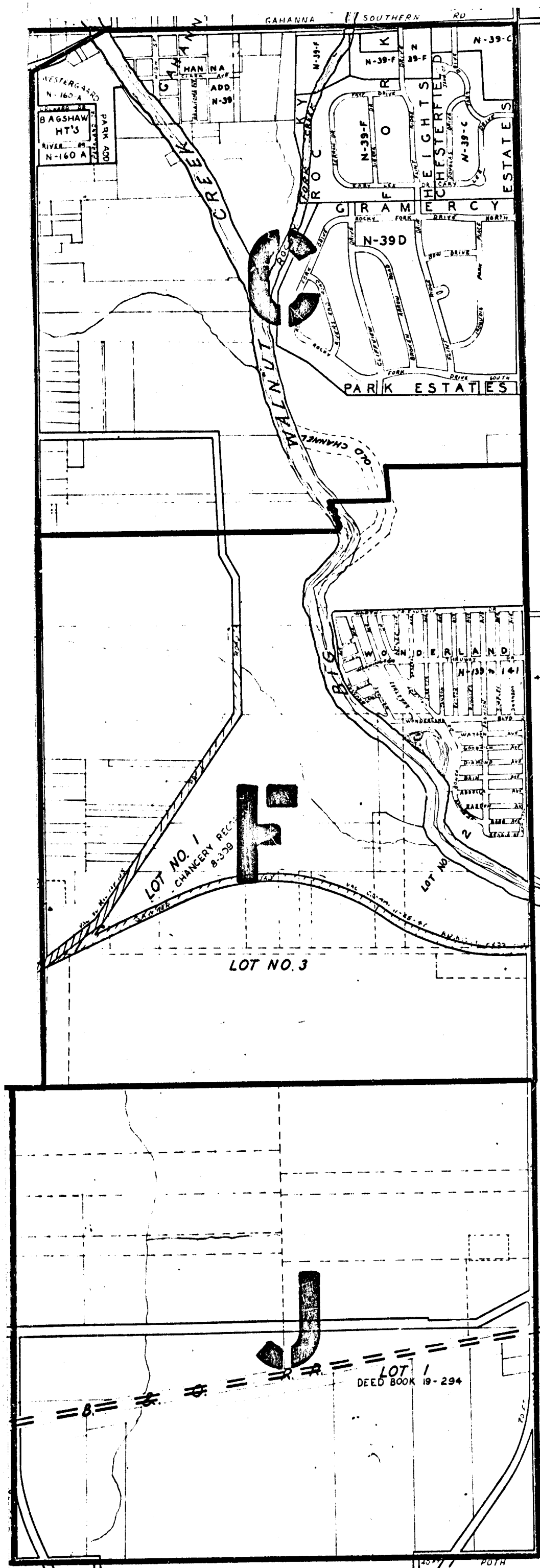


58

3569

CENTRAL 10

0-59



J E F F E R S O N T P R

NOTE
 ROAD NAME CHANGES IN
 WONDERLAND ADDN BY ORD 140-27
 ALL STREET NAMES CHANGED
 EXCEPT WONDERLAND BLV.

SE. QR.
 MIFFLIN TP.
 R. 17 TP. 1
 SCALE 1 INCH = 500'