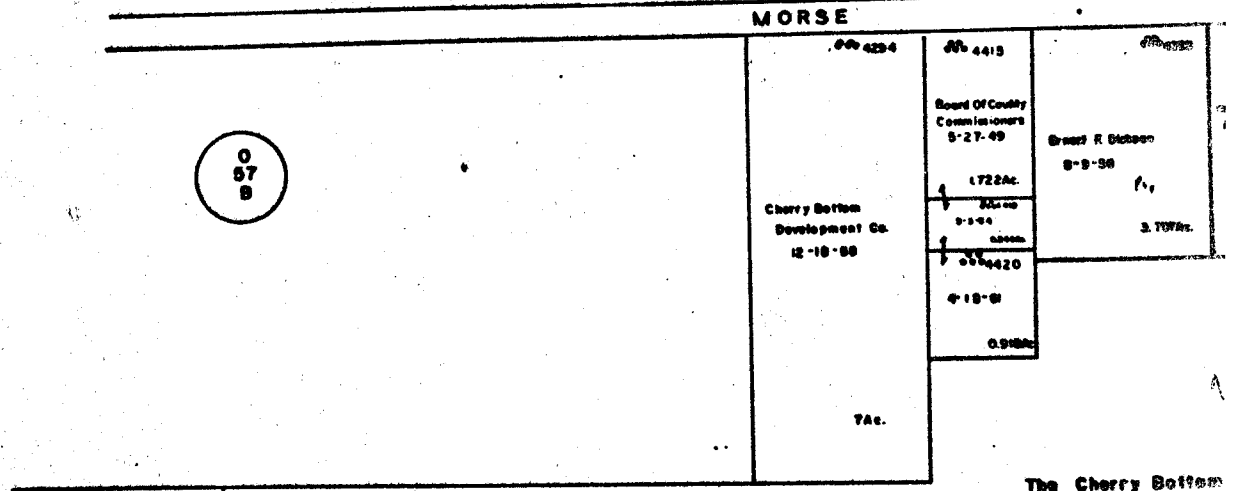


B L E N D O N

0
4

MORSE



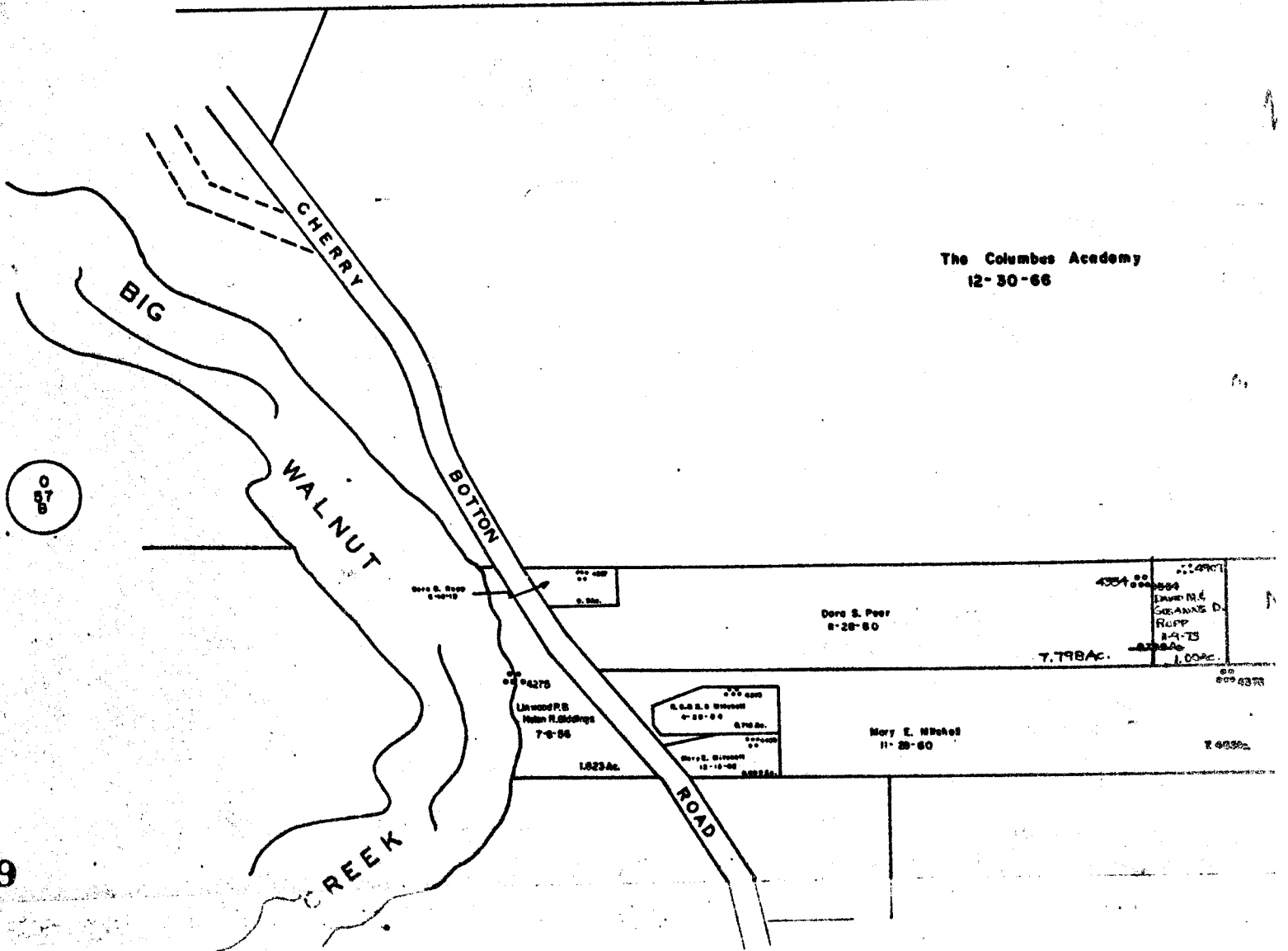
The Cherry Bottom
11-18-68

0
87
8

The Columbus Academy
2-6-67

76.577Ac

The Columbus Academy
12-30-66



T W P

PLAIN TWP

0-57-C

MIFFIN TWP
R.17 TWPI

SCALE 1"=200'
TAXING DISTRICTS
CITY OF GAHANNA

42400
L. G. ...
19-50
2.81Ac.

4278

BEECH-MOR
N-134
TERRACE

4272

Twins Mulberger
N-19-63

17.815 Ac.

Development Co.

43.098 Ac.

4300

4300
N-19-73
1.11Ac.

D.L. GUTHRIE
N-134
ALLOTMENT

4307

James M. Ryan
3-13-72

James M. Ryan
3-13-72

3 Ac.

421

4350

George B. Esther M. Slopes
9-8-52

8825 Ac.

7-16-70

4314

7-16-70

2.048 Ac.

James M. Ryan
7-10-70

4289

2.048 Ac.

9 Ac.

George B. Esther M. Slopes
3-10-71

4373

5.797 Ac.

Margery F. Mulberger
0-14-57

4366

3.864 Ac.

J.G.M. F. ...
3-3-72 0.874 Ac.

Thomas ...
8-10-53 1.059 Ac.

4295

Jay G. & Thomas S. Mulberger
9-17-59

38.406 Ac.

4281

127.689 Ac.

Oscar E. Corlin (3)
0-8-59 2.30Ac.

4291

4271

Oscar E. Corlin E/A(3)
6-27-67

Thomas & B. Paris A. McDowell
8-8-50 2.430 Ac.

18.1435 Ac.

Thomas ...
8-8-50 0.933 Ac.

T W P

J E F F E R S O N

0
37

HAMILTON ROAD

0
37
F

0-57-C 3540