

CITY

28

29

21

8

30

FRANKLIN TWP.

JACKSON TWP.

HAMILTON

Part of 13448
(2.552 Ac)

Anderson
Concrete
Corp
1-20-70
22.552 Ac

American Aggregates Corp
5-29-41

American Aggregates Corp
12-10-81

P.B. 2-43
11-22-37

Record Office
American Aggregates Corp
11-22-37

American Aggregates Corp
11-22-37

American Aggregates Corp
9-27-37

American Aggregates Corp
5-29-41

American Aggregates Corp
7-30-36

American Aggregates Corp
12-10-37

American Aggregates Corp
12-9-32

American Aggregates Corp
12-10-37

American Aggregates Corp
11-24-34

American Aggregates Corp
11-27-37

MERION'S

BROOKSIDE

CASTLE TERRACE

CASTLE TERRACE

SOUTHLAND

SOUTHLAND

NEW

VILLAGE

Complete Record

Amelia Windmiller (L.F.)
2-13-45

R.C. Windmiller
2-12-45

Ventures Inc.
5-0-62

Robert B. Lawrence Goodfellow
10-10-22

Elizbeth Nick
11-23-25

14.4-Ac

Sweto Trail Swimming
Club, Inc.
11-11-60

Harley H. Oakes
2-22-69

11Ac

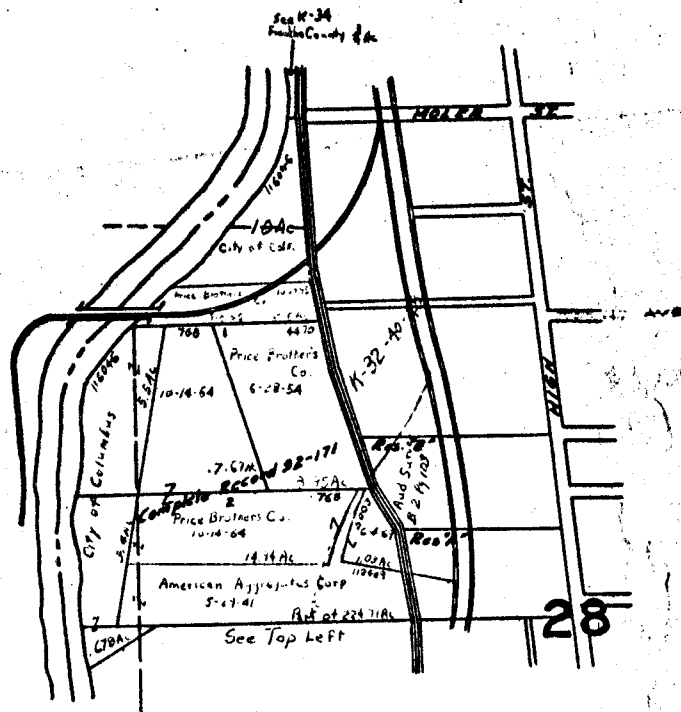
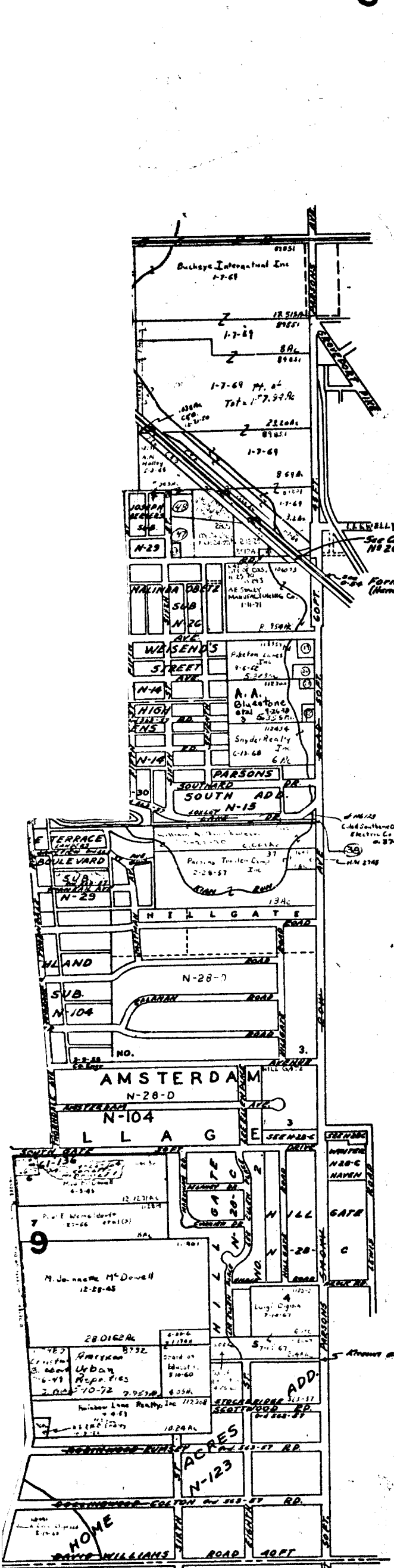
4Ac

SCIO TO RIVER

SCIO TO RIVER

084
150
222

COLUMBUS



- ① 4786 VALE Bldg 12-11-33 1.1A
- ② 1-066 E. Lynn Bldg 11-17-44 0.18Ac
- ③ 11224 R. L. Shomsky 1-10-60 3.490Ac
- ④ 15077 R. L. Ball 10-20-64 1.109Ac
- ⑤ 32277 Robert L. Spillman 10-8-64 1.128Ac
- ⑥ 2356 AN. F. L. E. VANLEPUWEN 2-1-73 828Ac
- ⑦ 113293 Oscar L. Thomas Jr. Tr. 1-30-70 1.074Ac
- ⑧ 15224 V.R. Bisher 4-17-67 0.640Ac
- ⑨ 113284 4-17-67 0.061Ac
- ⑩ 113299 CITY OF COLUMBUS (CTCP 240,744) 10-1-70 0.5Ac
- ⑪ 113627 F.M. J.C. HEINLEN 3-2-71 0.83B
- ⑫ 8905 F.M. J.C. HEINLEN 3-2-71 0.607
- ⑬ 112425 F.M. J.C. HEINLEN 8-27-71 0.648Ac
- ⑭ 113600 BAR PROPERTIES 3-9-71 16.531Ac 85.85'S.L. 832.1'W.L.
- ⑮ 114027 R.A. WELCH 3-6-70 0.2017Ac (TO CORR 3-4-71)
- ⑯ CARON, Paul 10-24-51 0.228Ac
- ⑰ 11110 CITY OF COL 6-22-73 2.100Ac
- ⑱ 2199 CITY OF COL 3-24-71 1.174Ac
- ⑲ 116005 Commercial oil corp 1-27-72 0.558Ac
- ⑳ 11254 H.J. FORD 9-17-71 0.556Ac
- ㉑ 405 M. Crabtree 2-17-72 0.159Ac
- ㉒ 2541 E. Johnson 2-20-51 0.387Ac
- ㉓ 112451 E. Goodhue & T.C. Purdue 10-8-64 2Ac
- ㉔ 116446 City of Columbus 9-22-75 Part of N. 817
- ㉕ 13448 Anderson Concrete Corp. 12-28-68 2.061 Ac.
- ㉖ 11252 CITY OF COLUMBUS 2-22-72 0.570Ac
- ㉗ DROP CITY OF COLUMBUS 8-30-70 0.431Ac 0.100Ac
- ㉘ DROP CITY OF COLUMBUS 8-4-70 0.530Ac
- ㉙ DROP CITY OF COLUMBUS 5-24-70 0.160Ac
- ㉚ DROP CITY OF COLUMBUS 1-29-70 0.058Ac
- ㉛ 1031 BAR PROPERTIES 3-22-71 0.098Ac
- ㉜ 3075 CITY OF COLUMBUS 5-13-71 0.498Ac
- ㉝ 3000 CITY OF COLUMBUS 5-13-71 0.270Ac
- ㉞ 3081 CITY OF COLUMBUS 5-13-71 0.119Ac
- ㉟ 111921 Paul L. Linda K. Schoddy 1-29-73 0.666Ac
- ㊱ 36 CITY OF COLUMBUS 7-13-71 (CTCP 240,744) 0.062Ac
- ㊲ 102 CITY OF COLUMBUS Area 242,086 12-13-71 0.195Ac
- ㊳ 1563 D. & F. INC. 12-30-71 0.1Ac
- ㊴ 7624 CITY OF COLUMBUS (CTCP 240,818) 3-27-72 0.086Ac
- ㊵ 7629 CITY OF COLUMBUS (CTCP 240,818) 3-27-72 0.247Ac
- ㊶ 9026 CITY OF COLUMBUS (CTCP 241,339) 6-19-72 0.391Ac
- ㊷ 9030 CITY OF COLUMBUS (CTCP 241,339) 6-19-72 0.319Ac
- ㊸ 117159 Columbia Gas of Ohio 7-13-67 0.057Ac
- ㊹ 114151 Standard Oil 1-16-67 0.279Ac
- ㊺ 11947 City of Columbus (Hi-way) 3-15-73 0.147Ac
- ㊻ 12178 CERTIFIED OIL CORP. 4-5-73 0.96Ac
- ㊼ 12154 CITY OF COLS 3-24-71 0.922Ac
- ㊽ 11212 1-28-71 (CTCP 240,744) 7-2-73 0.322Ac
- ㊾ DROP CITY OF COLS (CTCP 240,817) 6-29-73 0.306Ac
- ㊿ DROP CITY OF COLS (CTCP 240,817) 6-29-73 0.177Ac

MARION TWP.
R. 22 TWP. 4
SCALE 1" = 500 FT.
RAW 10-6-69

TWP.

23