

0-54-000

1"=100'

Sec 0-54

59

Frank Vlack
2-26-65

WILLIAM R. & MARIA T. TOBIAS
1-29-69

Frank Vlack
2-27-65
1 Ac.

16.695 Ac.

John Eramo
1-29-69

Peter & Mary Gyompi
2-10-68

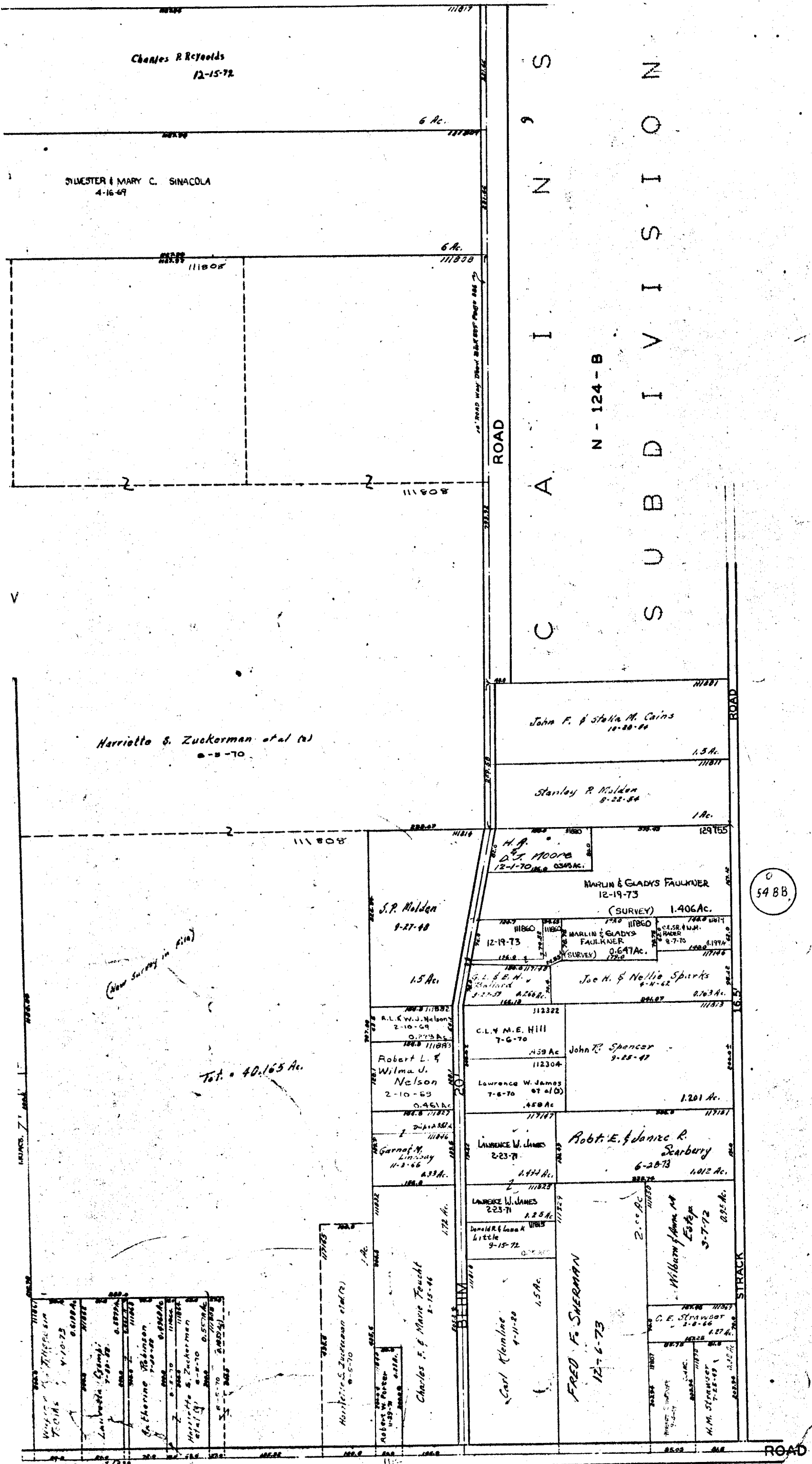
6.71 Ac.

2.34 Ac.

WILLIAMS

SPANGLER

3511



Charles R. Reynolds
12-15-72

SYLVESTER & MARY C. SINICOLA
4-16-69

Harriette S. Zuckerman et al (s)
8-8-70

S
N
I
A
C
S
U
B
D
I
V
I
S
I
O
N

N - 124 - B

Tot. = 40.165 Ac.

(New Survey in Area)

5488

Virginia M. Thompson
7-10-73
0.6188 Ac.

Lauretta G. Gump
7-29-72
0.8977 Ac.

Catherine Robinson
7-29-72
0.8980 Ac.

Harriette S. Zuckerman
8-8-70
0.5574 Ac.

M.M. Stranuser
7-28-69
0.27 Ac.

Harriette S. Zuckerman et al (s)
8-8-70

Robert W. Porter
11-29-70
0.288 Ac.

Charles F. & Marie Fouche
1-15-46
1.72 Ac.

Carl Kleinline
4-11-80
1.5 Ac.

FRED F. SHERMAN
12-6-73
2.00 Ac.

William J. Estep
3-7-72
0.95 Ac.

C. E. Strawser
2-8-66
0.27 Ac.

M.M. Stranuser
7-28-69
0.27 Ac.