

020

Kenneth R. Vivian R. Room

RD. REC. 16 P.227		BELLUE AVENUE	
1 R.M. B.M. Kelly 3-28-64 505 AC	1 H.K.B.P.J. Kerr 114636 1-31-63 488 AC	2 K.B.N.J. Foster 4-17-70 507 AC	2 H.A.B.W.F. Mohr 114635 7-7-67 473 AC
3 K.B.N.J. Foster 4-17-70 507 AC	3 M.A. B.E.V. Siche 114637 8-12-66 679 AC	4 R.L.B.C.M. Ni 114638 11-1-68 679 AC	4 R.L.B.C.M. Ni 114638 11-1-68 679 AC
5 R.K. Co. 6-18-65 505 AC	5 Mathias Lillian Macey 7-30-73 5 667 AC	6 J.W. B.T. Brown 114640 8-10-66 653 AC	6 J.W. B.T. Brown 114640 8-10-66 653 AC
7 H.B.N.L. Foss 11-1-68 505 AC	7 A.O.V. Green 114641 8-10-66 641 AC	8 L.E.B.M. McIlroy 114659 9-8-71 628 AC	8 96 Cleveland Ave Co 114642 9-8-71 628 AC
9 V.L.B.A. Miller 11-25-63 505 AC	9 O.B.B. Shinnell 114643 11-9-67 624 AC	10 O.D.M. L. Stone 114660 9-12-68 588 AC	10 O.D.M. L. Stone 114660 9-12-68 588 AC
11 Murray Thomas 11-1-68 505 AC	11 R.F.R. Johnson 114648 3-1-68 683 AC		
LAWDALE AVENUE		LAWDALE AVENUE	
1 J.W. Mearns 8-23-68 459 AC	18 E.M.B.A. Williams 114108 1-8-63 474 AC	19 W.R.B.B. Bell 114109 6-8-68 47 AC	19 W.R.B.B. Bell 114109 6-8-68 47 AC
2 S.E.S.H. Boush 9-2-70 459 AC	20 C.L.B.K. Hamilton 114110 1-8-66 47 AC	21 F.B.S. Jones 114111 1-8-66 47 AC	21 F.B.S. Jones 114111 1-8-66 47 AC
3 W.M.G.A. Stone 9-16-72 459 AC	22 Singer O. J. Miller 114112 12-27-79 459 AC	23 G.H.M. S. Foss 114113 3-28-72 466 AC	23 G.H.M. S. Foss 114113 3-28-72 466 AC
4 Lorraine J. Bann 3-10-67 459 AC	24 Jimmy Dams 114114 10-20-70 467 AC	25 L.B.B. J. Wess 114115 10-20-70 467 AC	25 L.B.B. J. Wess 114115 10-20-70 467 AC
5 W.M.G.A. Stone 9-16-72 459 AC	26 M.B.E.T. Conner 114116 5-25-72 489 AC	27 E.B.V. Washington 114117 5-25-72 489 AC	27 E.B.V. Washington 114117 5-25-72 489 AC
6 H.M.B.M. Nelson 1-14-63 459 AC	28 E.B.V. Washington 114118 5-25-72 489 AC	29 William L. Macey 114119 5-25-72 489 AC	29 William L. Macey 114119 5-25-72 489 AC
7 H.B. J. Denton 11-1-68 459 AC	30 Robert Wallace 114120 10-20-70 489 AC	31 George M. B. Jones 114121 10-20-70 489 AC	31 George M. B. Jones 114121 10-20-70 489 AC
CASSADY AVENUE		CASSADY AVENUE	
1 W.J. B.P.A. Miller 2-8-68 459 AC	21 B.E.L. Stone 114122 8-31-72 459 AC	22 R.D. D.A. Jones 114123 2-28-69 459 AC	22 R.D. D.A. Jones 114123 2-28-69 459 AC
2 Mary B. E. Stone 1-1-66 459 AC	23 W.D.B.P. Harris 114124 1-1-66 459 AC	24 M.P.H. E. Williams 114125 1-1-66 459 AC	24 M.P.H. E. Williams 114125 1-1-66 459 AC
3 H.B.E.M. Harris 1-1-66 459 AC	25 Walter Wallace 114126 1-1-66 459 AC	26 G.B.D. Stone 114127 1-1-66 459 AC	26 G.B.D. Stone 114127 1-1-66 459 AC
4 E.H.M. C. Stone 1-1-66 459 AC	27 Walter Wallace 114128 1-1-66 459 AC	28 E.B.V. Washington 114129 5-25-72 489 AC	28 E.B.V. Washington 114129 5-25-72 489 AC
5 Mary F. Hill 2-10-64 459 AC	29 William L. Macey 114130 5-25-72 489 AC	30 Robert Wallace 114131 10-20-70 489 AC	30 Robert Wallace 114131 10-20-70 489 AC
6 H.M.B.M. Nelson 1-14-63 459 AC	31 George M. B. Jones 114132 10-20-70 489 AC		
KNOX AVENUE		KNOX AVENUE	
1 W.H. P. Goulet 7-1-67 459 AC	21 B.E.L. Stone 114133 8-31-72 459 AC	22 R.D. D.A. Jones 114134 2-28-69 459 AC	22 R.D. D.A. Jones 114134 2-28-69 459 AC
2 Mary B. E. Stone 1-1-66 459 AC	23 W.D.B.P. Harris 114135 1-1-66 459 AC	24 M.P.H. E. Williams 114136 1-1-66 459 AC	24 M.P.H. E. Williams 114136 1-1-66 459 AC
3 H.B.E.M. Harris 1-1-66 459 AC	25 Walter Wallace 114137 1-1-66 459 AC	26 G.B.D. Stone 114138 1-1-66 459 AC	26 G.B.D. Stone 114138 1-1-66 459 AC
4 E.H.M. C. Stone 1-1-66 459 AC	27 Walter Wallace 114139 1-1-66 459 AC	28 E.B.V. Washington 114140 5-25-72 489 AC	28 E.B.V. Washington 114140 5-25-72 489 AC
5 Mary F. Hill 2-10-64 459 AC	29 William L. Macey 114141 5-25-72 489 AC	30 Robert Wallace 114142 10-20-70 489 AC	30 Robert Wallace 114142 10-20-70 489 AC
6 H.M.B.M. Nelson 1-14-63 459 AC	31 George M. B. Jones 114143 10-20-70 489 AC		

0-54-CC
MARION TWP. (OLD 54 E)
R.22 TP.4



SCALE 1"=100'
TAXING DISTRICT
COLUMBUS

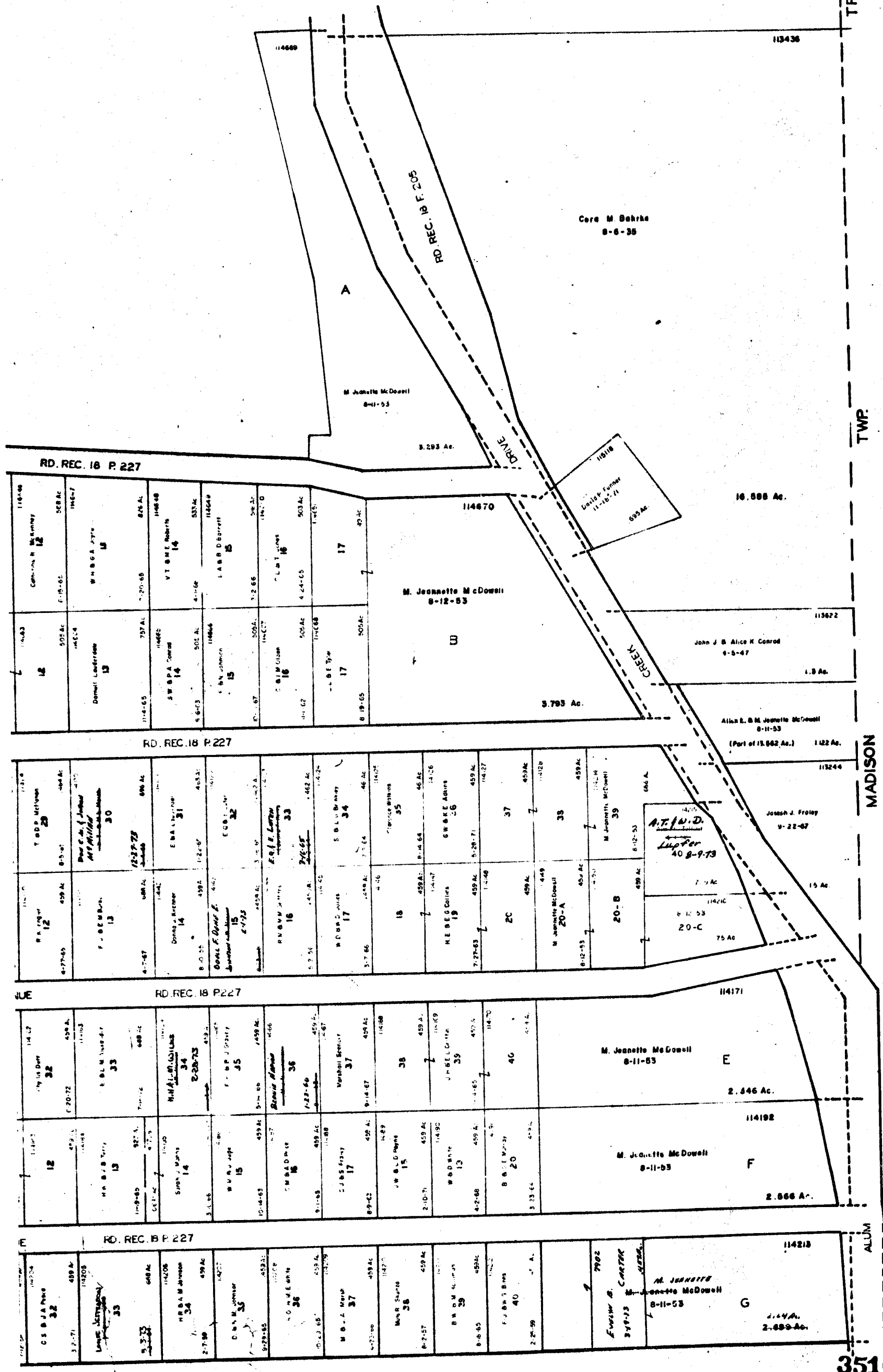
53
T

TRURO TWP.

TWP

MADISON

ALUM



53
T

3510

