

Rec. Office
See
0-53

Line
103961
Page 305
PLAT BOOK
Chemtron Corp.
9-5-58
1.74Ac
Complete Record 272 Page 302

103969
5.54Ac.
F.P.B. Realty Co.
12-29-70

104095
104095
104051
LAC

3487
Sec. 27 1/2 Sec. 41
Sec. 27 1/2 Sec. 40

111894
111895
Kimble Glass Co.
3-20-53
2.50Ac.
3.50Ac.

103958
103958
Kimble Glass Co.
4-4-55
1.475Ac.

103969
103969
F.P.B. Realty Co.
12-29-70
9.00Ac.

104076
104076
DeLille Oxygen Co.
10-10-64
2.112 Ac

104090
104090
Pyrofax Gas Corp
6-6-63
1.092Ac.
Union Carbide & Carbon Corp.
2-16-51
Tot. 8.488Ac.
4.498Ac.

104095
104095
104051
LAC

111895
111895
West Line of 14.31 Ac. Tract J
387.74' 115297
Carl E. BWM Bubbett
11-30-65
386.8' 0.72Ac.

103958
103958
Kimble Glass Co.
4-4-55
1.475Ac.

103969
103969
F.P.B. Realty Co.
12-29-70
9.00Ac.

104076
104076
DeLille Oxygen Co.
10-10-64
2.112 Ac

104090
104090
Pyrofax Gas Corp
6-6-63
1.092Ac.
Union Carbide & Carbon Corp.
2-16-51
Tot. 8.488Ac.
4.498Ac.

104095
104095
104051
LAC

111895
111895
West Line of 14.31 Ac. Tract J
387.74' 115297
Carl E. BWM Bubbett
11-30-65
386.8' 0.72Ac.

103958
103958
Kimble Glass Co.
4-4-55
1.475Ac.

103969
103969
F.P.B. Realty Co.
12-29-70
9.00Ac.

104076
104076
DeLille Oxygen Co.
10-10-64
2.112 Ac

104090
104090
Pyrofax Gas Corp
6-6-63
1.092Ac.
Union Carbide & Carbon Corp.
2-16-51
Tot. 8.488Ac.
4.498Ac.

104095
104095
104051
LAC

111895
111895
West Line of 14.31 Ac. Tract J
387.74' 115297
Carl E. BWM Bubbett
11-30-65
386.8' 0.72Ac.

103958
103958
Kimble Glass Co.
4-4-55
1.475Ac.

103969
103969
F.P.B. Realty Co.
12-29-70
9.00Ac.

104076
104076
DeLille Oxygen Co.
10-10-64
2.112 Ac

104090
104090
Pyrofax Gas Corp
6-6-63
1.092Ac.
Union Carbide & Carbon Corp.
2-16-51
Tot. 8.488Ac.
4.498Ac.

104095
104095
104051
LAC

111895
111895
West Line of 14.31 Ac. Tract J
387.74' 115297
Carl E. BWM Bubbett
11-30-65
386.8' 0.72Ac.

103958
103958
Kimble Glass Co.
4-4-55
1.475Ac.

103969
103969
F.P.B. Realty Co.
12-29-70
9.00Ac.

104076
104076
DeLille Oxygen Co.
10-10-64
2.112 Ac

104090
104090
Pyrofax Gas Corp
6-6-63
1.092Ac.
Union Carbide & Carbon Corp.
2-16-51
Tot. 8.488Ac.
4.498Ac.

104095
104095
104051
LAC

111895
111895
West Line of 14.31 Ac. Tract J
387.74' 115297
Carl E. BWM Bubbett
11-30-65
386.8' 0.72Ac.

103958
103958
Kimble Glass Co.
4-4-55
1.475Ac.

103969
103969
F.P.B. Realty Co.
12-29-70
9.00Ac.

104076
104076
DeLille Oxygen Co.
10-10-64
2.112 Ac

104090
104090
Pyrofax Gas Corp
6-6-63
1.092Ac.
Union Carbide & Carbon Corp.
2-16-51
Tot. 8.488Ac.
4.498Ac.

104095
104095
104051
LAC

111895
111895
West Line of 14.31 Ac. Tract J
387.74' 115297
Carl E. BWM Bubbett
11-30-65
386.8' 0.72Ac.

103958
103958
Kimble Glass Co.
4-4-55
1.475Ac.

103969
103969
F.P.B. Realty Co.
12-29-70
9.00Ac.

104076
104076
DeLille Oxygen Co.
10-10-64
2.112 Ac

104090
104090
Pyrofax Gas Corp
6-6-63
1.092Ac.
Union Carbide & Carbon Corp.
2-16-51
Tot. 8.488Ac.
4.498Ac.

104095
104095
104051
LAC

111895
111895
West Line of 14.31 Ac. Tract J
387.74' 115297
Carl E. BWM Bubbett
11-30-65
386.8' 0.72Ac.

103958
103958
Kimble Glass Co.
4-4-55
1.475Ac.

103969
103969
F.P.B. Realty Co.
12-29-70
9.00Ac.

104076
104076
DeLille Oxygen Co.
10-10-64
2.112 Ac

104090
104090
Pyrofax Gas Corp
6-6-63
1.092Ac.
Union Carbide & Carbon Corp.
2-16-51
Tot. 8.488Ac.
4.498Ac.

104095
104095
104051
LAC

111895
111895
West Line of 14.31 Ac. Tract J
387.74' 115297
Carl E. BWM Bubbett
11-30-65
386.8' 0.72Ac.

103958
103958
Kimble Glass Co.
4-4-55
1.475Ac.

103969
103969
F.P.B. Realty Co.
12-29-70
9.00Ac.

104076
104076
DeLille Oxygen Co.
10-10-64
2.112 Ac

104090
104090
Pyrofax Gas Corp
6-6-63
1.092Ac.
Union Carbide & Carbon Corp.
2-16-51
Tot. 8.488Ac.
4.498Ac.

104095
104095
104051
LAC

111895
111895
West Line of 14.31 Ac. Tract J
387.74' 115297
Carl E. BWM Bubbett
11-30-65
386.8' 0.72Ac.

103958
103958
Kimble Glass Co.
4-4-55
1.475Ac.

103969
103969
F.P.B. Realty Co.
12-29-70
9.00Ac.

104076
104076
DeLille Oxygen Co.
10-10-64
2.112 Ac

104090
104090
Pyrofax Gas Corp
6-6-63
1.092Ac.
Union Carbide & Carbon Corp.
2-16-51
Tot. 8.488Ac.
4.498Ac.

104095
104095
104051
LAC

111895
111895
West Line of 14.31 Ac. Tract J
387.74' 115297
Carl E. BWM Bubbett
11-30-65
386.8' 0.72Ac.

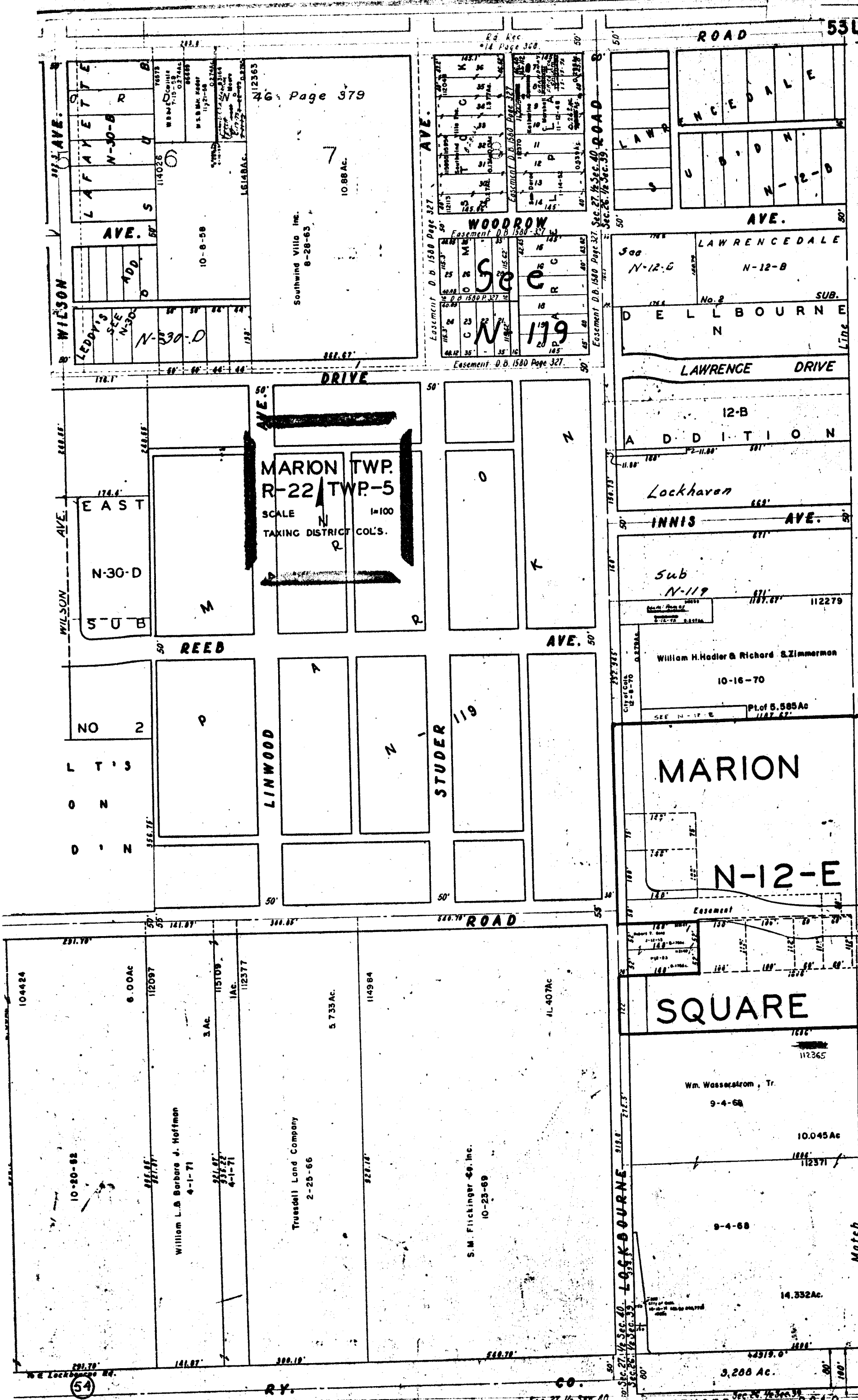
103958
103958
Kimble Glass Co.
4-4-55
1.475Ac.

103969
103969
F.P.B. Realty Co.
12-29-70
9.00Ac.

104076
104076
DeLille Oxygen Co.
10-10-64
2.112 Ac

104090
104090
Pyrofax Gas Corp
6-6-63
1.092Ac.
Union Carbide & Carbon Corp.
2-16-51
Tot. 8.488Ac.
4.498Ac.

104095
104095
104051
LAC



WILSON AVE.
LAFAYETTE
N-30-B
114026
10-6-58
LEDDY'S SEE N-30-D
112363
16148AC.

46 Page 379
7
10.88 AC.
Southwind Villa Inc.
8-28-63

WOODROW
Easement D.B. 1580 Page 327
N-119
Easement D.B. 1580 Page 327
Easement D.B. 1580 Page 327

ROAD 53L
LAWRENCE AVE.
N-12-B
D E L L B O U R N E
LAWRENCE DRIVE
12-B
A D D I T I O N
Lockhaven
INNIS AVE.
Sub N-119
112279
William H. Hadler & Richard S. Zimmerman
10-16-70
Pt. of 5.585 Ac
1187.67'

WILSON AVE.
EAST
N-30-D
SUB
NO 2
L T ' S
O N
D ' N

DRIVE
MARION TWP.
R-22 TWP-5
SCALE 1=100
TAXING DISTRICT COL'S.

REED AVE.
LINWOOD
STUDER 119
AVE. 50'

500
N-12-B
No. 2
SUB.
D E L L B O U R N E
LAWRENCE DRIVE
12-B
A D D I T I O N
Lockhaven
INNIS AVE.
Sub N-119
112279
William H. Hadler & Richard S. Zimmerman
10-16-70
Pt. of 5.585 Ac
1187.67'

NO 2
L T ' S
O N
D ' N

REED AVE.
LINWOOD
STUDER 119
AVE. 50'

REED AVE.
LINWOOD
STUDER 119
AVE. 50'

500
N-12-B
No. 2
SUB.
D E L L B O U R N E
LAWRENCE DRIVE
12-B
A D D I T I O N
Lockhaven
INNIS AVE.
Sub N-119
112279
William H. Hadler & Richard S. Zimmerman
10-16-70
Pt. of 5.585 Ac
1187.67'

104424
10-20-82
6.00 AC
112097
William L. & Barbara J. Hoffman
4-1-71
3 AC
115109
Truesdell Land Company
2-25-66
5.735 AC
114984
S. M. Flickinger Co. Inc.
10-23-69
11.407 AC
104424
10-20-82
6.00 AC
112097
William L. & Barbara J. Hoffman
4-1-71
3 AC
115109
Truesdell Land Company
2-25-66
5.735 AC
114984
S. M. Flickinger Co. Inc.
10-23-69
11.407 AC

LOCKBOURNE
10.045 Ac
9-4-68
112365
Wm. Wassstrom, Tr.
9-4-68
14.332 Ac
3,208 Ac.
REFUGEE ROAD
54