

SHEET

RAY

PART OF 6183 AC.

CITY OF
8-13-65

CITY OF
8-13-65

(SCHOTTENSTEIN)
(SEE PAGE 47)

Leon Schottenstein et al (A)
2-30-67

PLATBOOK 2 PAGE 28

33

185 12 AC.

JEAN SCHOTTENSTEIN (old)

8-7-70 25.22 AC.

JEAN SCHOTTENSTEIN (old)

8-7-70 R. 64 AC.

PARKER B. RAREY 5-11-62

15.92 AC.

PONTIUS
PART OF 7154 AC. #280

N.G. & RUTH ARCHER
3-1-48

25 AC. #277

N.G. & RUTH

WILLIAM G. & MARY O. BENDER
12-8-52

WRA B. MILLER
7-24-59

RUBEY W. GOODMAN
9-24-60

47

R. 21

W. ARCHER
3-1-48

JOHN L. & GRACE E. K. COFFEY
10-2-52

9752 A.

JOHN L. & GRACE E. K. COFFEY
1-10-49

KENNETH & VIRGINIA L. SCHLAGAL
11-7-57

JOHN N. MILLER
7-24-59

JOHN L. & GRACE E. K. COFFEY
11-18-58

SHEET NO. 7

SEE O-97

FRANK N. MILLER
7-24-59

W. Record X Page 309
P. 243

DUSTIN S. & MARGARET B. SWISHER
5-19-58

78.098 AC
PAR #42

42 AC
PAR #338

DUSTIN S. & MARGARET B. SWISHER
8-17-46

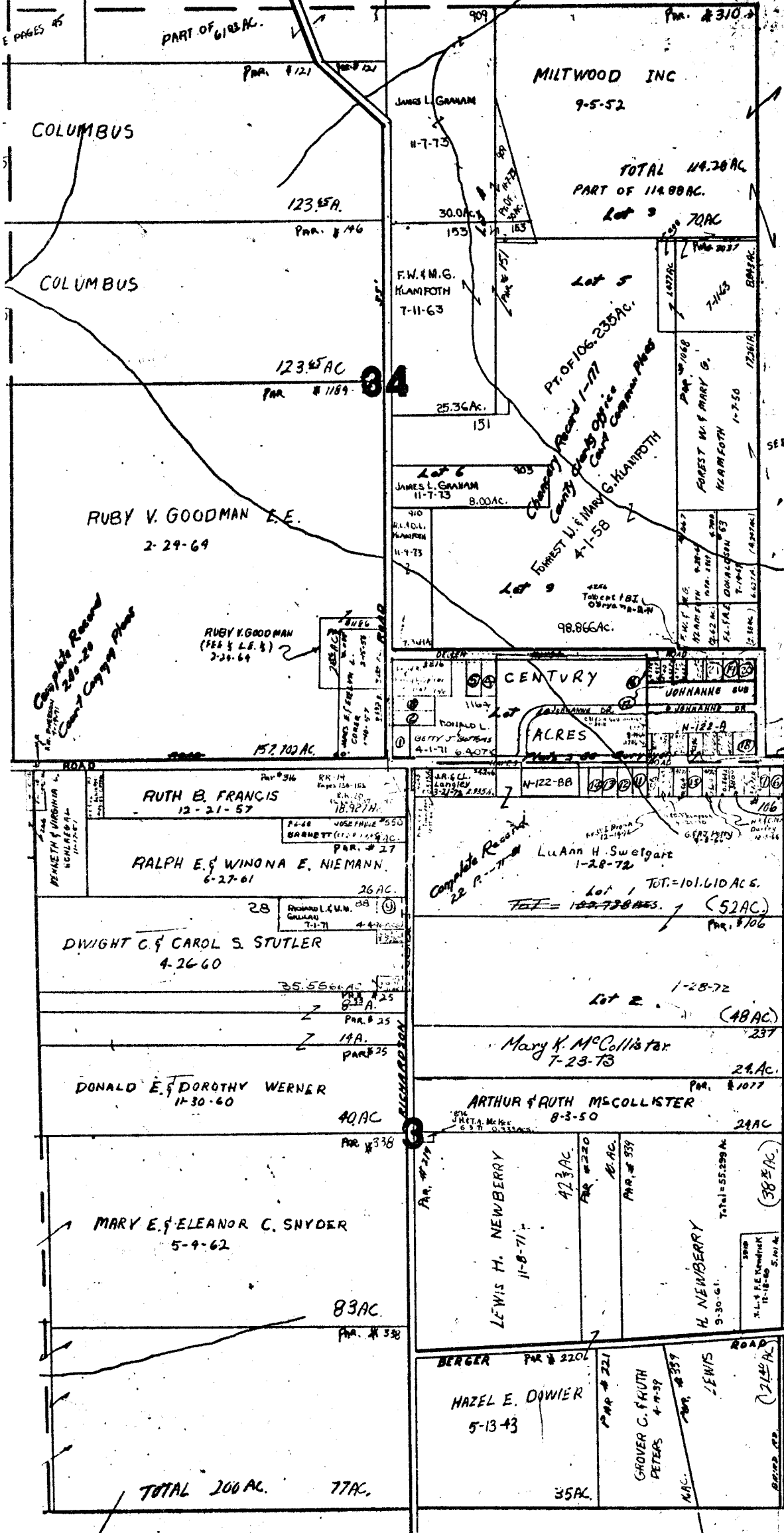
72.52 AC.

40 AC.

SHEET NO. 11

NO. 5

MOND L. KATHERINE W. UZINGER



SHEET NO. 9

51

- 576 CHAS. V. L. FIELDS 10-22-64 0.973 AC.
- 175 D.L. & J. BOYD 4-1-71 0.769 AC.
- 182 D.L. & J. BOYD 4-1-71 0.769 AC.
- 117 R.L. & M. WILSON 6-7-71 0.687 AC.
- 107 L.H. & B. HUSSELL 7-25-71 0.687 AC.
- 638 R.G. & M. HARRIS 11-20-72 0.565 AC. SURV
- 635 EVERETT M. JR. & L. BARNETT 11-20-72 0.565 AC.
- 643 HUBERT & D. THOMPSON 8-30-73 0.520 AC.
- 662 BERNARD L. GILLILAN 2-24-78 0.520 AC.
- 548 DONALD W. & LUCILE MILLER 1-15-73 0.564 AC.
- 544 MICHAEL & LINDA FRYE 2-5-73 0.565 AC.
- 549 RICHARD F. HILLS 6-29-72 0.566 AC.
- 593 RICHARD F. HILLS 6-29-72 0.567 AC.
- 1731 GARY PERRY 9-6-72 0.564 AC.
- 4738 G.D. & K.R. THOMPSON 9-9-66 0.537 AC.
- 4739 E.M. & R.J. HODGES 8-24-70 0.537 AC.
- 851 DUNN O. & V.L. DAILEY 9-21-73 0.933 AC.
- 3272 ACOTIA & SHIRLEY L. LARUE 1-17-73 0.537 AC.
- 134 EARL W. & L. HARTLEY 6-7-67 0.619 AC.
- 4292 JAMES A. HECK 7-2-73 0.537 AC.

50

SHEET NO. 83456
 MADISON TR.
 R. 21 TP. 10-11
 SCALE 1 INCH = 500 FT.