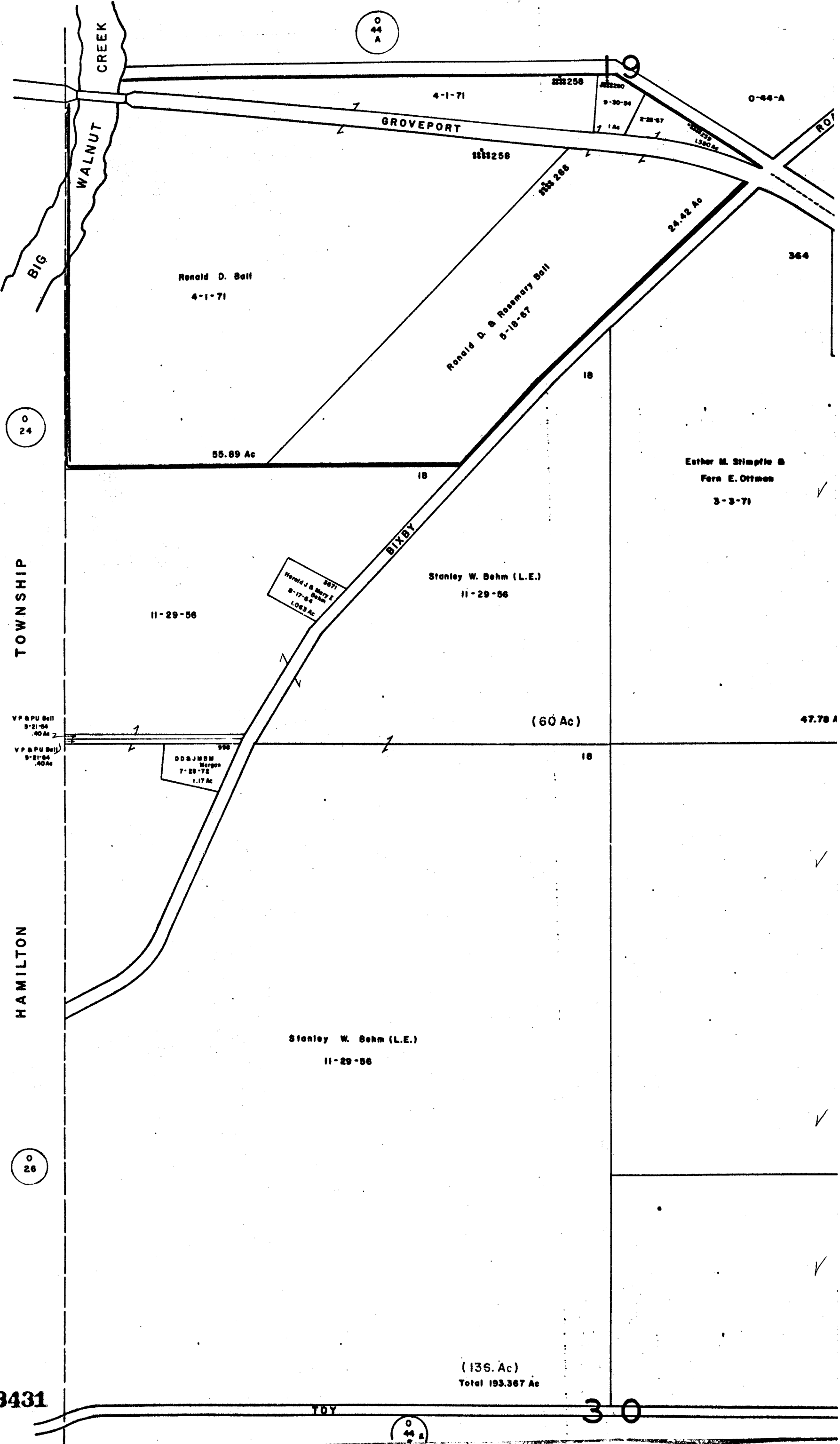


0
44
A



0
24

TOWNSHIP

HAMILTON

0
26

3431

0
44
A

30

(136. Ac)
Total 193.367 Ac

O
44
A

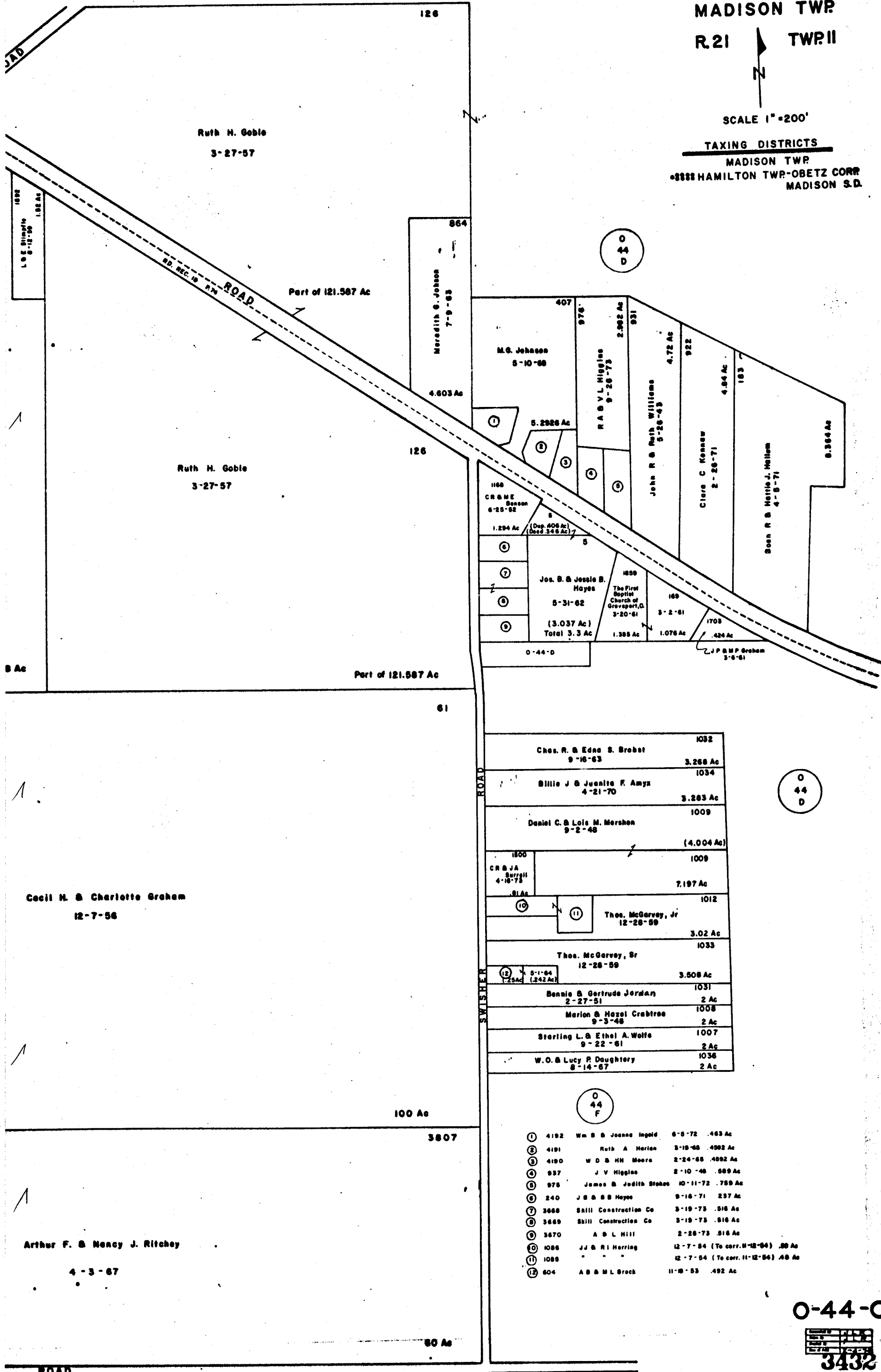
O-44-C

MADISON TWP
R.21 TWP.11



SCALE 1" = 200'

TAXING DISTRICTS
MADISON TWP
•8888 HAMILTON TWP-OBETZ CORR
MADISON S.D.



O
44
D

O
44
D

O
44
F

1032	Chas. R. & Edna S. Brobst	9-16-63	3.268 Ac
1034	Billie J & Juanita F. Amyx	4-21-70	3.283 Ac
1009	Daniel C. & Lois M. Marshon	9-2-48	(4.004 Ac)
1009	CR & JA Surratt	4-16-73	7.197 Ac
1012	Thos. McGarvey, Jr	12-28-59	3.02 Ac
1033	Thos. McGarvey, Sr	12-28-59	3.508 Ac
1031	Bennie & Gertrude Jordan	2-27-51	2 Ac
1008	Marion & Hazel Crabtree	9-3-48	2 Ac
1007	Sterling L. & Ethel A. Wolfe	9-22-61	2 Ac
1036	W.O. & Lucy R. Daughtery	8-14-67	2 Ac

①	4192	Wm B & Joanne Ingold	6-5-72	.463 Ac
②	4191	Ruth A Harlan	3-19-65	.492 Ac
③	4190	W D & MN Moore	2-24-65	.492 Ac
④	937	J V Higgins	2-10-48	.689 Ac
⑤	975	James & Judith Stokes	10-11-72	.759 Ac
⑥	240	J B & B B Hayes	9-16-71	.257 Ac
⑦	3668	Skill Construction Co	3-19-73	.516 Ac
⑧	3669	Skill Construction Co	3-19-73	.516 Ac
⑨	3670	A B L Hill	2-28-73	.516 Ac
⑩	1086	JJ & RI Herring	12-7-84 (To corr. 11-12-84)	.80 Ac
⑪	1088	" " "	12-7-84 (To corr. 11-12-84)	.48 Ac
⑫	604	A B & M L Brock	11-18-53	.492 Ac

O-44-C
3432