

40
41
E

Virginia Goodyear
6-24-50

54.17 Ac.

State of Ohio
9-12-67

9.93 Ac.

Equities Diversified Inc.
10-23-73

196

CT. CP. 229,969
(18.93 Ac.)
4-11-67

Total 20,284
(1,894 Ac.)

State of Ohio (Hi-Way)
4-11-67

74.343 Ac.



State of Ohio (Hi-Way)
11-28-66

Equament
11-28-66

Alum Creek Drive Company
8-31-73

27.678 Ac.

BIG

W A L L

Charles E. B. Ruth Esswein
2-28-63

Ronald D. Ball
4-1-71

Ronald D. Ball
4-1-71

31.875 Ac.

33.08 Ac.

The Home Missions Board of the Ohio Conference
A. M. E. Zion Church
8-1-62

25.822 Ac.

S. J. B. B. B.
Bruzzone
6-1-64

J. B. F. Oster
11-6-68

3.213 Ac.

8-1-62

4.356 Ac.

1080

B Z H Land Co.
10-12-71

17.334 Ac.

19

Charles E. Esswein
1-21-46

6.94 Ac.

OLD GROVEPORT ROAD

NEW GROVEPORT ROAD

BIXBY

1098
C. E. B. R. L. Esswein
9-23-62
2.8275 Ac.
1183
R. F. Whiston
10-18-64
1.05 Ac.
1087
E. F. B. E. Brown
4-22-70
2.8270 Ac.

0
44
C

3122

No

No

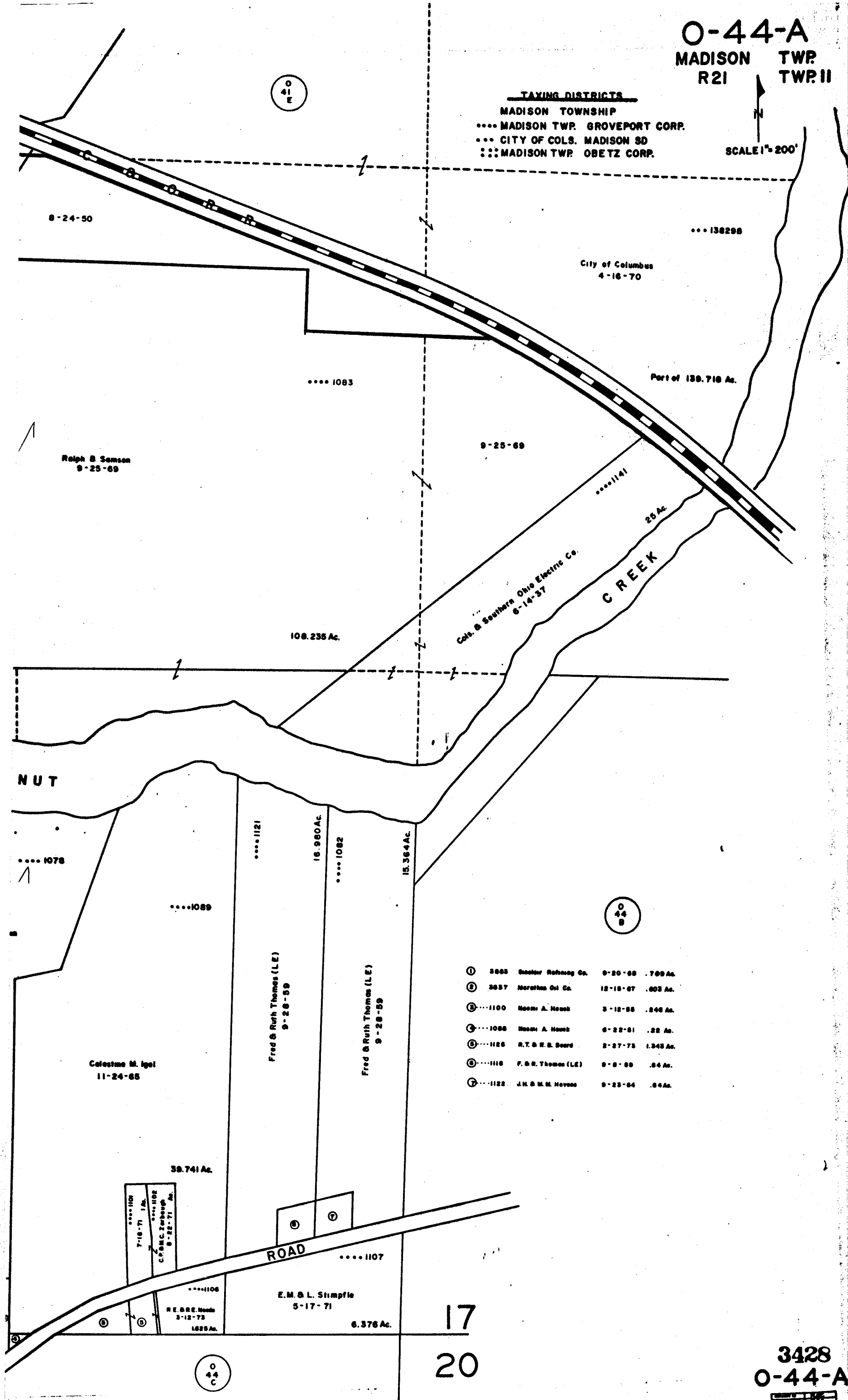
HAMILTON TWR

ALUM CREEK R.R.

O-44-A
MADISON TWP
R21 TWP. II

TAXING DISTRICTS
MADISON TOWNSHIP
 MADISON TWP. GROVEPORT CORP.
 ... CITY OF COLS. MADISON SD
 ::: MADISON TWP. OBETZ CORP.

SCALE 1" = 200'



8-24-50

... 138298

City of Columbus
4-16-70

.... 1083

Part of 139.718 Ac.

Ralph B. Semson
9-25-69

9-25-69

.... 1141

Col. & Southern Ohio Electric Co.
6-14-37

CREEK

108.235 Ac.

NUT

.... 1078

.... 1089

Celestine M. Igel
11-24-65

.... 1121
Fred & Ruth Thomas (L.E)
9-28-59

16.980 Ac.

.... 1082

.... 1082
Fred & Ruth Thomas (L.E)
9-28-59

15.364 Ac.

O
44
B

①	3883	Stator Refining Co.	9-20-68	.789 Ac.
②	3837	Merithin Oil Co.	12-15-67	.803 Ac.
③	1100	Moore A. Housh	3-12-55	.246 Ac.
④	1088	Moore A. Housh	6-22-61	.28 Ac.
⑤	1128	R.T. & E.S. Beard	2-27-73	1.345 Ac.
⑥	1118	F. & R. Thomas (L.E)	9-9-59	.84 Ac.
⑦	1122	J.M. & M.M. Meyers	9-23-64	.64 Ac.

39.741 Ac.

.... 1101
7-18-71
C.P. BAC. Zerbeugh
8-22-71

ROAD

.... 1107

E.M. & L. Stimpfle
5-17-71

.... 1108
R.E. & R.E. Nease
3-12-73
1.625 Ac.

6.376 Ac.

17

20

O
44
C

3428
O-44-A

