

0  
42  
E

394

342

Ruth E Piper  
8-25-69

Alme E Stevenson et al(3)  
5-16-50

75.958 Ac

HEWLETT  
CREEK

ROAD

357

357

3-20-70

Lezer Belcheff et al(4)  
3-20-70

(19 Ac)

(28 Ac)  
Total 47 Ac

15

190

HARREL G SPURLOCK (R.T. Hill  
Sylvester Simicola et al(3))  
4-8-68  
8-29-73

Henry C & Ruth Knoplesch  
6-6-62

18 Ac



HIGHWAY

8-19-63

Edward K. & Madge Rose  
2-28-62

2

(2.893 Ac.)

Total 43.31 Ac

10 Ac

0  
42  
6

3041

3041

15

Chapin & Chapin, Inc.  
8-19-63

(12.607 Ac)

Tot. 15.5 Ac

NO. 1

H.G. SPURLOCK (R.T. Hill  
S. Simicola et al(3))  
4-8-68  
8-29-73

43.31 Ac

EASEMENT

COMPLETE REC. 57  
P. 391

3045

271

Chapin & Chapin, Inc.  
9-23-63

(19.4 Ac)

Robert E & Bonnie B Evans  
1-6-55

4.43 Ac  
Total 9.42 Ac

NO. 2

Donald W & Mary L.  
Drake  
12-31-63

2.82 Ac

0  
45

3407

0-42-H

MADISON TWP.

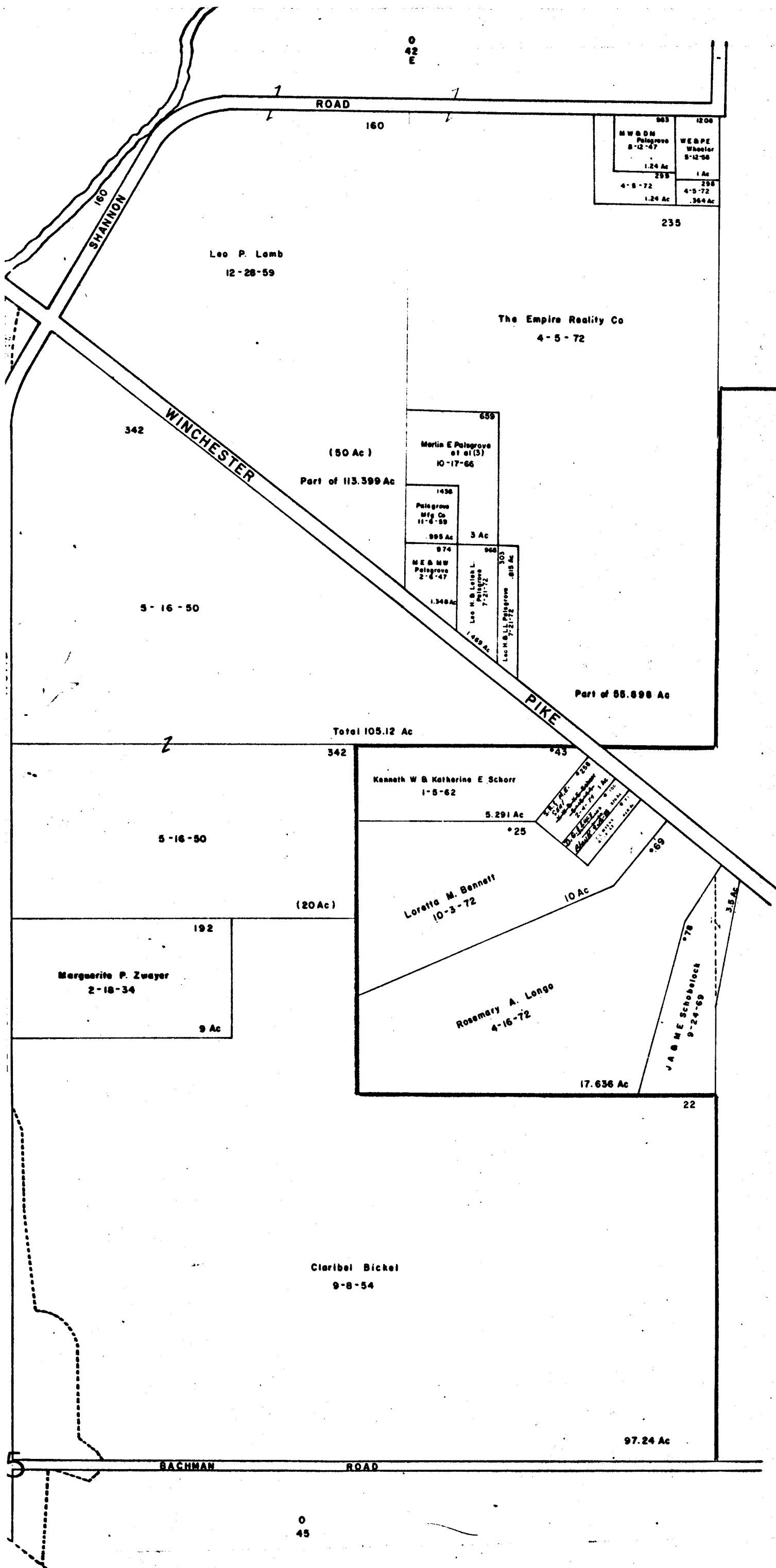
R. 21 TWP. 11



SCALE 1" = 200'

TAXING DISTRICT  
MADISON TWP.

\*MADISON TWP.-CANAL WINCHESTER



0  
42  
J

0  
42  
J

0-42-H  
3468
