

2  
c

31

469

COMMON PLEAS COURT

4

1-14-63

COMPLETE RECORD 29-376

3

George W. & Mary E. Bowman  
1-14-63

George W. & Mary E. Bowman  
1-14-63

Total = 146.27 Ac.

(56.75 Ac.)

(40.5 Ac.)

40.5 Ac.

467  
Mary L. Bowman  
10-16-59  
1.75 Ac.

(49.38 Ac.)

SHANNON

195

332

ROAD

SHANNON

Wilbur P. & Esther P. Rawn  
10-8-46

Viola M. Rawn E1A1(C)  
5-23-67

50 Ac.

\*35

Leo D. Lamb  
12-28-59

(40.76 Ac.)

92 Ac.

Part Of 98.52 Ac.

0  
42  
H

3403

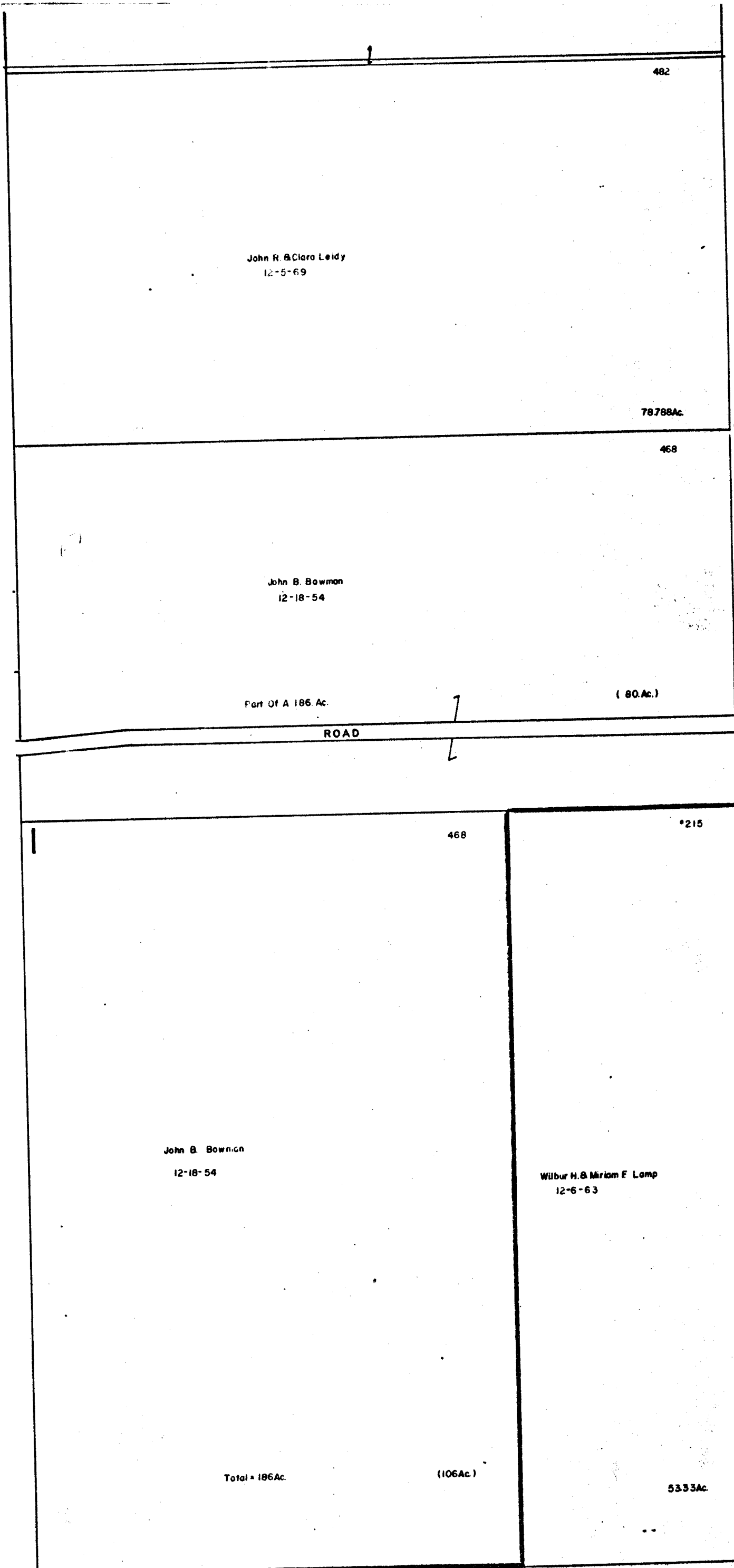
0-42-F

MADISON TWP  
R.21 TWRII



SCALE 1"=200'

MADISON  
MADISON CANAL WINCHESTER SD



Q  
43

Q  
42  
J

0-42-F


3404