

32

BRONZEVILLE ESTATES

M-94-A

M-94-GG

2899

CADD. CORN. 8-2-55 0.229Ac

Petrole A. Short

1-5-66
5.922 Ac

2003

Wisconsin Evangelical Lutheran Synod
3-13-68
4.49 Ac

NO. 4

2905

Allen C. & Anna K. Keil

George M. & Martha E. Milligan

11-2-45

Pr. Of 32.918 Ac.

Allen C. & Anna K. Keil

12-30-68

Pr. Of 52 Ac.

2899
2120

688 of 11

10-3-67

George M. & Martha E. Milligan

ALLAN C. & ANNA K. KEIL
12-11-73

11-2-45

29.588 Ac. JULY EASEMENT
11.768 Ac.

1-8-59

52 Ac.

2899

GEORGE M. & MARTHA E. MILLIGAN
11-2-45

32.918 Ac.
Total = 84.818 Ac

State of Ohio

2-11-69

6.2 Ac

7-71

34

0-34-A

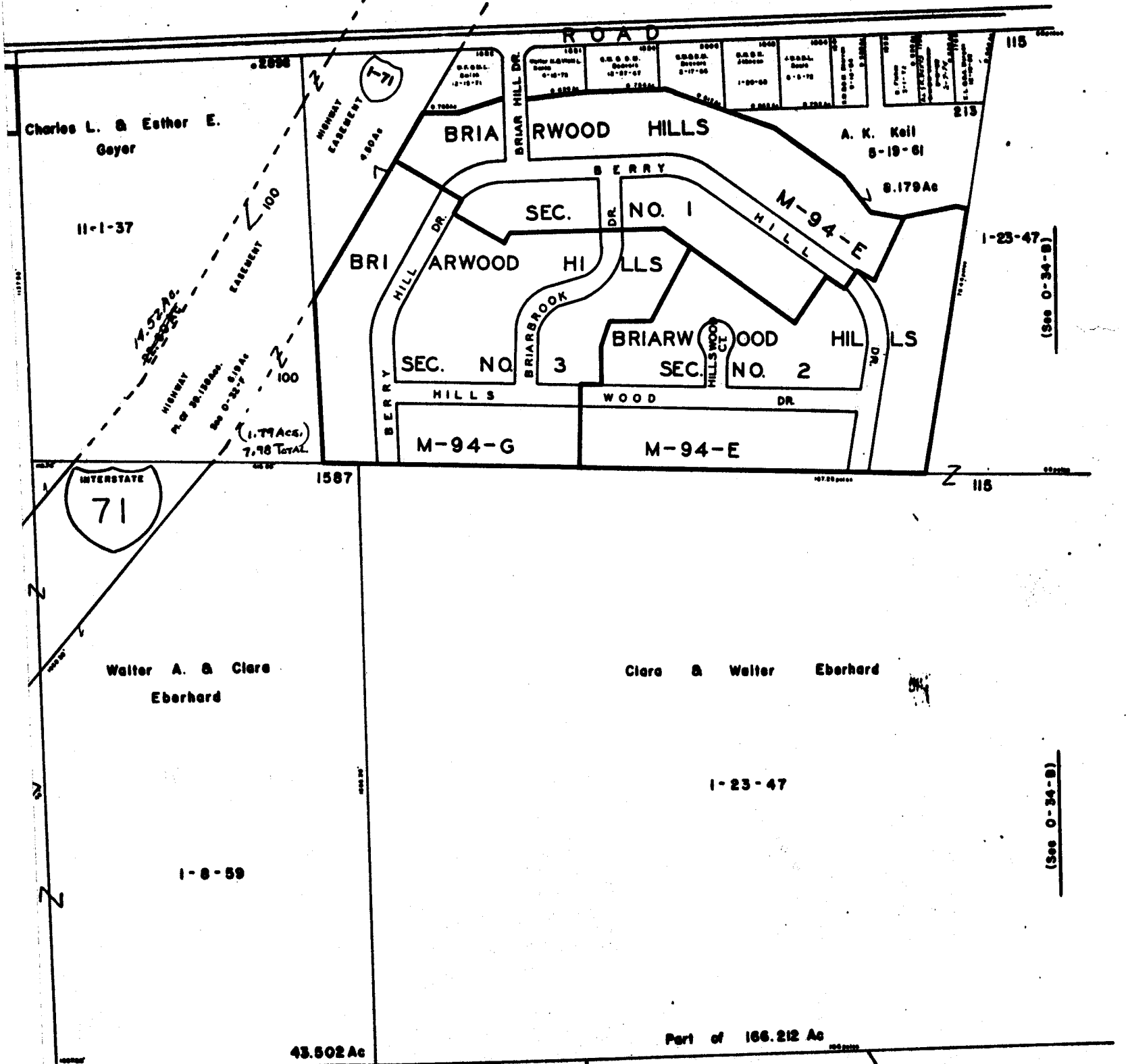
JACKSON TWP



SCALE 1" = 200'

TAXING DISTRICTS JACKSON TWP

Grove City



34