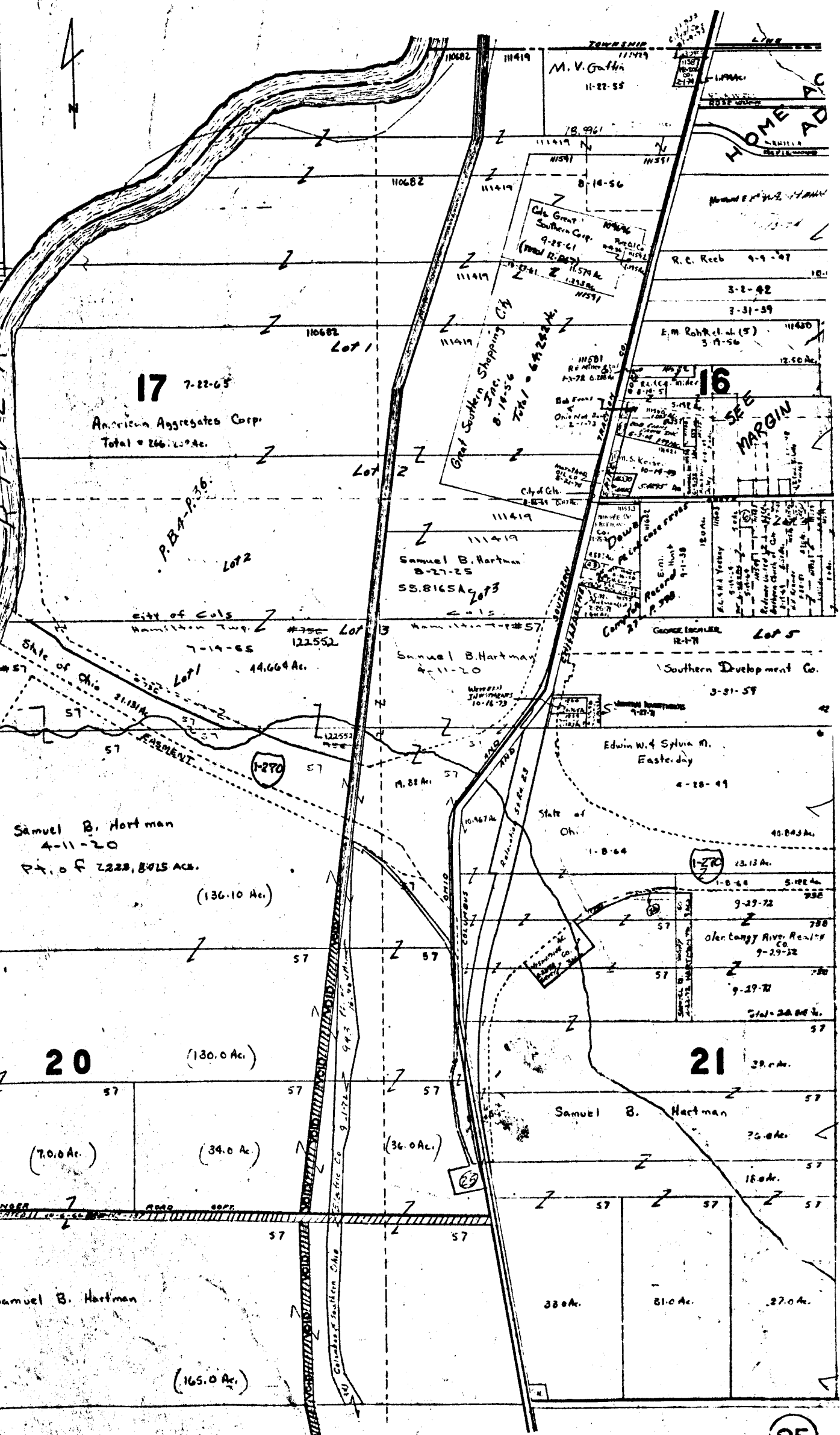


1" = 200'
 ① M&A Robt. L. Kelley 4-2-49 L&AAA.

JACKSON TP.
 SCOTO RIVER

32

3221

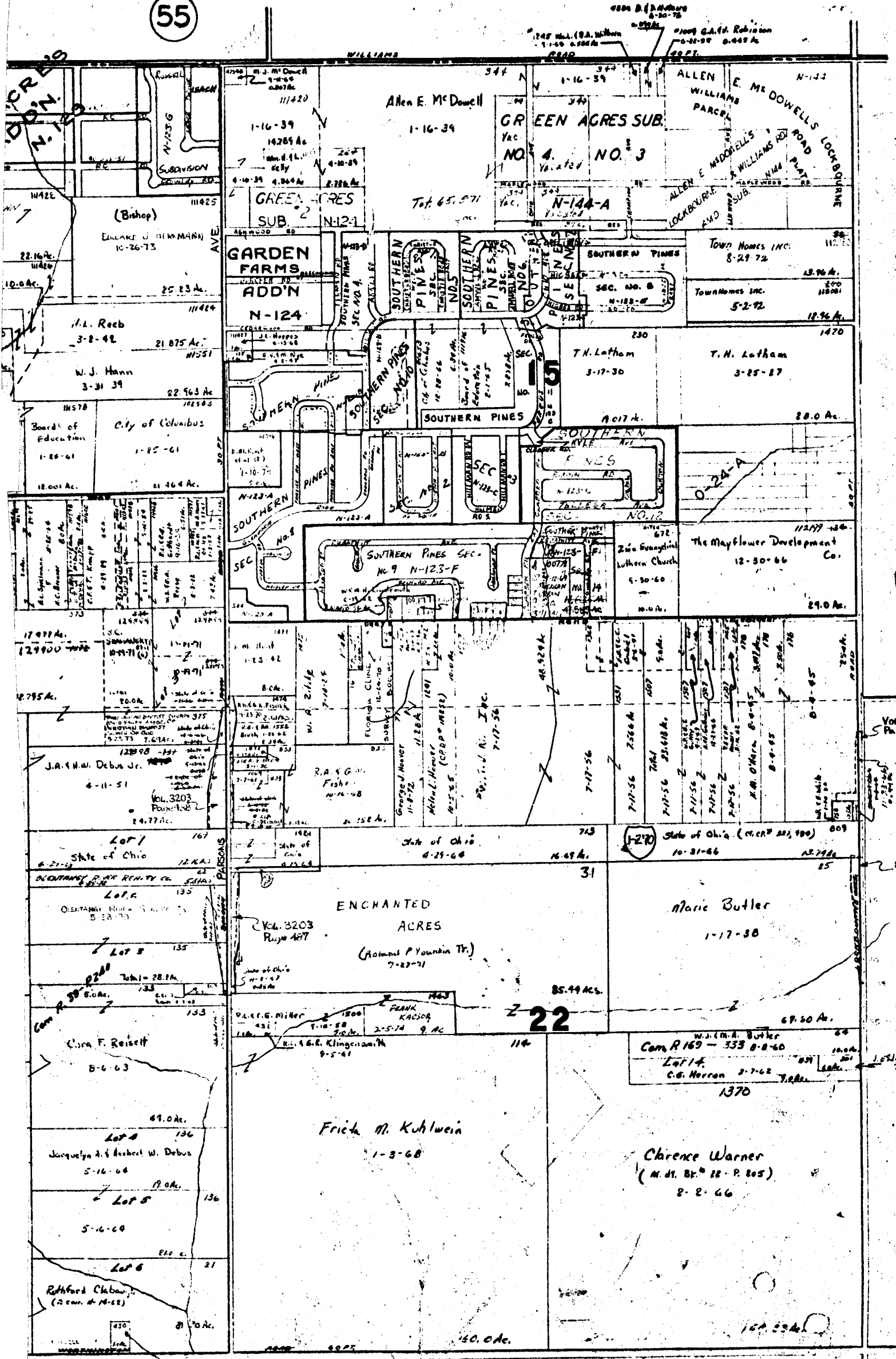


- ① 107197 CITY OF COLUMBUS 10-20-71 0.0374 ACS.
- ② 106648 CITY OF COLUMBUS 10-20-71 0.0374 ACS.
- ③ 106635 CITY OF COLUMBUS 10-20-71 0.0374 ACS.
- ④ 108187 CITY OF COLUMBUS 10-20-71 0.0374 ACS.
- ⑤ 107476 CITY OF COLUMBUS 10-20-71 0.0374 ACS.
- ⑥ 77 VENTURE Co 5-22-72 0.894 ACS.
- ⑦ 111224 Harold B. & Gloria Full 9-14-72 0.4536 ACS.
- ⑧ 67 Ronald P. Youngkin Jr. 6-22-72 0.2145 ACS.
- ⑨ 78 Standard Oil Co. 12-1-72 2.0734 ACS.
- ⑩ 115339 Sylvia McGee 5-72 0.662 ACS.
- ⑪ 114711 Morris Skirrow & S. G. Gorm 9-3-71 1.719 ACS.

25

ION TR.

55



24

Vol. 3203 Page 489

Vol. 3203 Page 488

- 114035 E. J. Ewing Thompson 12-20-73
- 114006 Donald E. F. O. Divens 4-1-73
- 114005 Roger D. & Loretta Beckelheimer 4-1-73
- 115631 James E. & L.F. McMillan 1-29-73
- 115630 Dennis J. & P.A. Sayre 1-19-73
- 115771 E.M. & M. J. ... 12-16-70
- 115772 ... 4-9-71
- 115773 ... 5-11-71
- 115774 ... 4-8-71
- 115775 W.M. & D.A. Angelter 3-7-72
- 115776 ... 3-5-71
- 115777 ... 7-30-71
- 115778 ... 7-30-71
- 115779 ... 7-30-71
- 115780 ... 7-30-71

SURVEY

N.W. PT.
HAMILTON TWP.
 3222
 R. 22 T. 1