

H. E. RICHTER'S

RICHMOND ROAD

SUBDIVISION

M-129

H.

- ① 392 County of Franklin (No-Way) 12-8-72 .217 Ac.
- ② 4210 Faye M. Selzgeber 6-21-72 .217 Ac.
- ③ 4221 ~~Faye M. Selzgeber~~ ~~12-8-72~~ .217 Ac.
- ④ 4220 Faye M. Selzgeber 6-21-72 .210 Ac.
- ⑤ 4093 W.E. & V.E. Chaffin 5-1-59 T-438 Ac.
- ⑥ 6554 Edward Merriam et al(3) 4-1-64 .1470 Ac.
- ⑦ 6553 Edward Merriam et al(3) 4-1-64 .177 Ac.
- ⑧ 6664 S.D. & J.E. Caylor 7-31-70 .209 Ac.
- ⑨ 7080 C.H. & B.J. Harness 9-29-67 .209 Ac.
- ⑩ 6408 C.H. & B.J. Harness 3-4-65 .209 Ac.
- ⑪ 5431 J.O. & R. May 9-24-57 .209 Ac.
- ⑫ 5432 J.O. & R. May 9-24-57 .209 Ac.
- ⑬ 7180 H.M. & J.S. Little 8-19-63 .261 Ac.
- ⑭ 4364 J.W. & M.V. Milam 9-3-66 .191 Ac.
- ⑮ 4024 Faye M. Selzgeber 6-21-72 .232 Ac.
- ⑯ 3378 J.M. & A.L. Percell 8-6-65 .13 Ac.
- ⑰ 5546 J.M. & A.L. Percell 1-26-55 .176 Ac.
- ⑱ 5287 J.M. & A.L. Percell 1-8-55 .081 Ac.
- ⑲ 6483 D.R. & S. Green 4-20-70 .081 Ac.
- ⑳ 6065 D.R. & S. Green 4-20-70 .162 Ac.
- ㉑ 6407 Leslie Hatfield 12-9-64 .161 Ac.
- ㉒ 5523 Leslie Hatfield 12-9-64 .161 Ac.
- ㉓ 6436 M.S. Campbell 9-22-69 .174 Ac.
- ㉔ 7180 H.M. & J.S. Little 8-19-63 .261 Ac.

0 21 A

717

ENGARDS

M-133-A

HART

JOHN P. HAAG'S

FIR ST

MARY

GREENLEAF ROAD

A D D.

ANN

M-208-A SUBDIVISION

BROWNLEAF

M-208-A

DELPHI AVE.

ENGADINE AVE.

MARSDALE

LONGWOOD AVE.

LONGWOOD AVE.

HENDRIX DR.

FINLAND

FRANK

BROWN

Faye M. Selzgeber
9-10-59

12.57 Ac.

514

G.P. & Rita G. Bikel
11-21-63

1404

G.P. & Rita G. Bikel
9-3-68

2904

ENGADINE AVE

PB 32 PG 3

4592 Ac

Pemco Inc.
10-20-47

292

4089
W.S. & C. Shaw
12-5-56
1.392 Ac

4.693 Ac

7221

1229

1229

1229

1229

1229

1229

1229

1229

1229

1229

1229

1229

1229

1229

1229

1229

3195

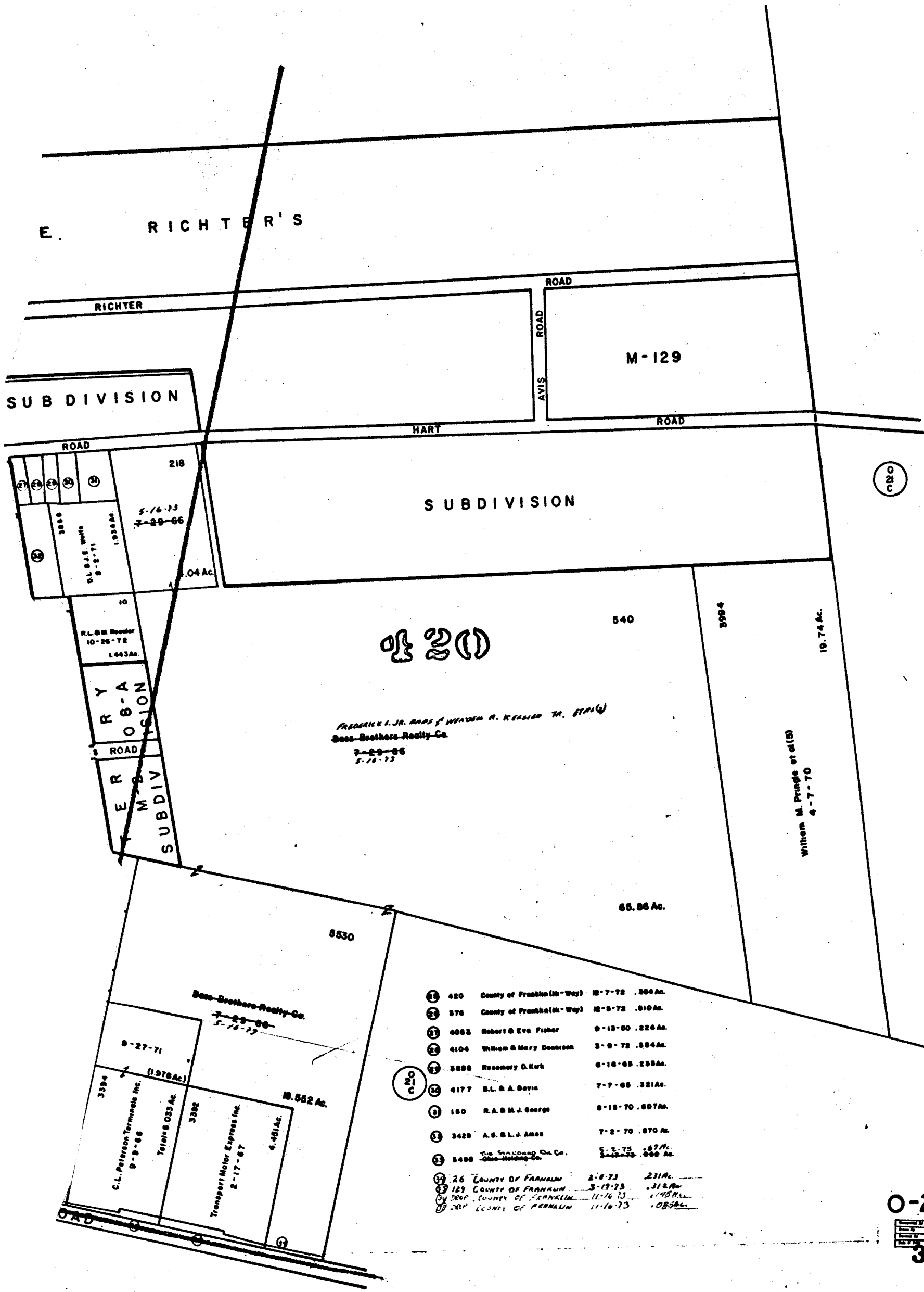
0 21 D

1 of 5 of

0 21 E

SCALE 1"=200'
VMS
TAXING DISTRICT
FRANKLIN TWP.

0
22
E



0
20
C

420	County of Franklin (In-Way)	12-7-72	.364 Ac.
375	County of Franklin (In-Way)	12-8-72	.510 Ac.
4082	Robert B. Eve Fisher	9-13-50	.226 Ac.
4104	William B. Mary Dearborn	3-9-72	.384 Ac.
3888	Rosemary D. Kirk	6-18-63	.238 Ac.
4177	D.L. & A. Davis	7-7-65	.321 Ac.
150	R.A. & M.J. George	9-15-70	.607 Ac.
3429	A.S. & L.J. Ames	7-2-70	.870 Ac.
5498	The Standard Oil Co. Ohio-Walbridge Co.	5-2-75 2-13-79	.67 Ac. .608 Ac.
26	COUNTY OF FRANKLIN	2-8-73	.231 Ac.
129	COUNTY OF FRANKLIN	3-13-73	.312 Ac.
300	COUNTY OF FRANKLIN	11-14-73	.145 Ac.
307	COUNTY OF FRANKLIN	11-16-73	.055 Ac.