

27 261014 C W B W R Sooty 1-12-71 .181 Ac
 28 261081 " 1-12-71 .181 Ac
 29 26114088 C W Sooty (7, 207) 8-31-73 .246 Ac
 30 26122035 Shee H. Yee 10-7-69 .187 Ac

0
19
A

PHILLIPI RD.

U.S. RT. 40

WEST BROAD

ROAD

GEORGESVILLE

14182

General Motors Corp.
4-30-45

3620

132292
Your Host, Inc
1-17-72

4.758 Ac

DR CHASE
VIOVIS CAMP
ADD.
BROWN'S CAMP
M-170

AVE

ANNET ST

ALICE RITA SUBDIVISION

TISHMAN ST.

M-170-C

ALICE RITA ST.

COOLIDGE

CCC
(Comb)

1425

149.376 Ac

CCC & RR
2-23-54

International Multi-Food Corp.
4-7-72

7.933 Ac

4-11-20
(Comb 3-8)

1-16

W.P.

WESTVIEW

SQUARE

INDUSTRIAL

PARK

M-74-D

Wm B Herriot Maurer
9-7-59
4.883 Ac

SULLIVANT

The Central
Trust Co., Tr.
12-21-66

State of Ohio
12-17-56

Western Ledges, Inc
6-1-62
2.9 Ac

Freddie Top, Tr.
6-24-53

3170

0
20
A

26122002 Harry L.
26136787 Michael
26121987 Betty B.

O-19-D
FRANKLIN TWP



SCALE 1" = 200'

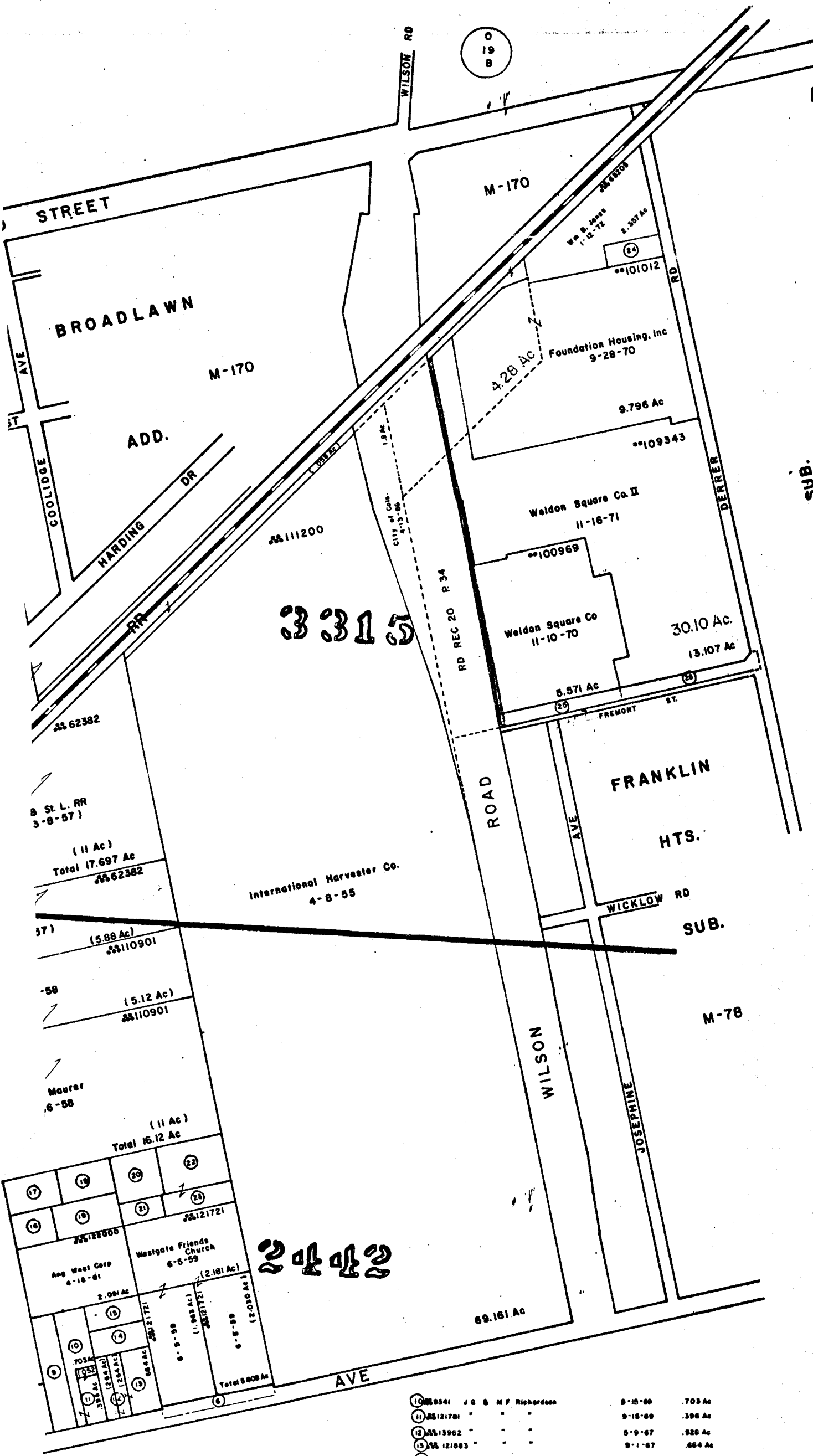
V. M. S.

TAXING DISTRICT

FRANKLIN TWP.

•• COLS. SOUTHWESTERN

•• CITY OF COLUMBUS



City of Colo	8-31-72	.1 Ac
City of Colo	8-3-67	.087 Ac
City of Colo	8-3-67	.700 Ac
City of Colo	1-10-68	.362 Ac
City of Colo	5-12-67	.362 Ac
City of Colo	4-20-73	.366 Ac
L. Groom	5-19-58	.6575 Ac
James Enterprises	5-8-63	.6598 Ac
M. Donohue	10-24-48	.762 Ac

0
20
A

10	•• 109341	J G & M F Richardson	9-15-66	.703 Ac
11	•• 121761	"	9-15-69	.396 Ac
12	•• 13962	"	9-9-67	.528 Ac
13	•• 121883	"	8-1-67	.664 Ac
14	•• 122027	F. Dale Johnson	8-31-61	.386 Ac
15	•• 36805	Stephen Blane Inc	11-10-61	.385 Ac
16	•• 89627	W R & H D Maurer	4-18-63	.387 Ac
17	•• 122596	J D & D M Rhodes	6-21-62	.82278 Ac
18	•• 122018	E H & P J Higginbotham	3-27-78	.52278 Ac
19	•• 122001	Hankle & Coffey	12-19-68	.6588 Ac
20	•• 122016	Larry & Susan J Frazier	2-16-73	.5805 Ac
21	•• 122006	Hilltop Westgate Realty, Inc	10-21-69	.2755 Ac
22	•• 122009	D W Ranney & Sons	11-13-61	.8790 Ac
23	•• 122021	"	11-13-61	.448 Ac
24	•• 12982	Cypress Cable T V of Colo	8-23-73	.403 Ac
25	•• 103173	City of Colo	2-13-73	.429 Ac
26	•• 103167	City of Colo	2-13-73	.528 Ac

O-19-D

Plat No.	0-19-D
Block No.	1
Page No.	1

3171