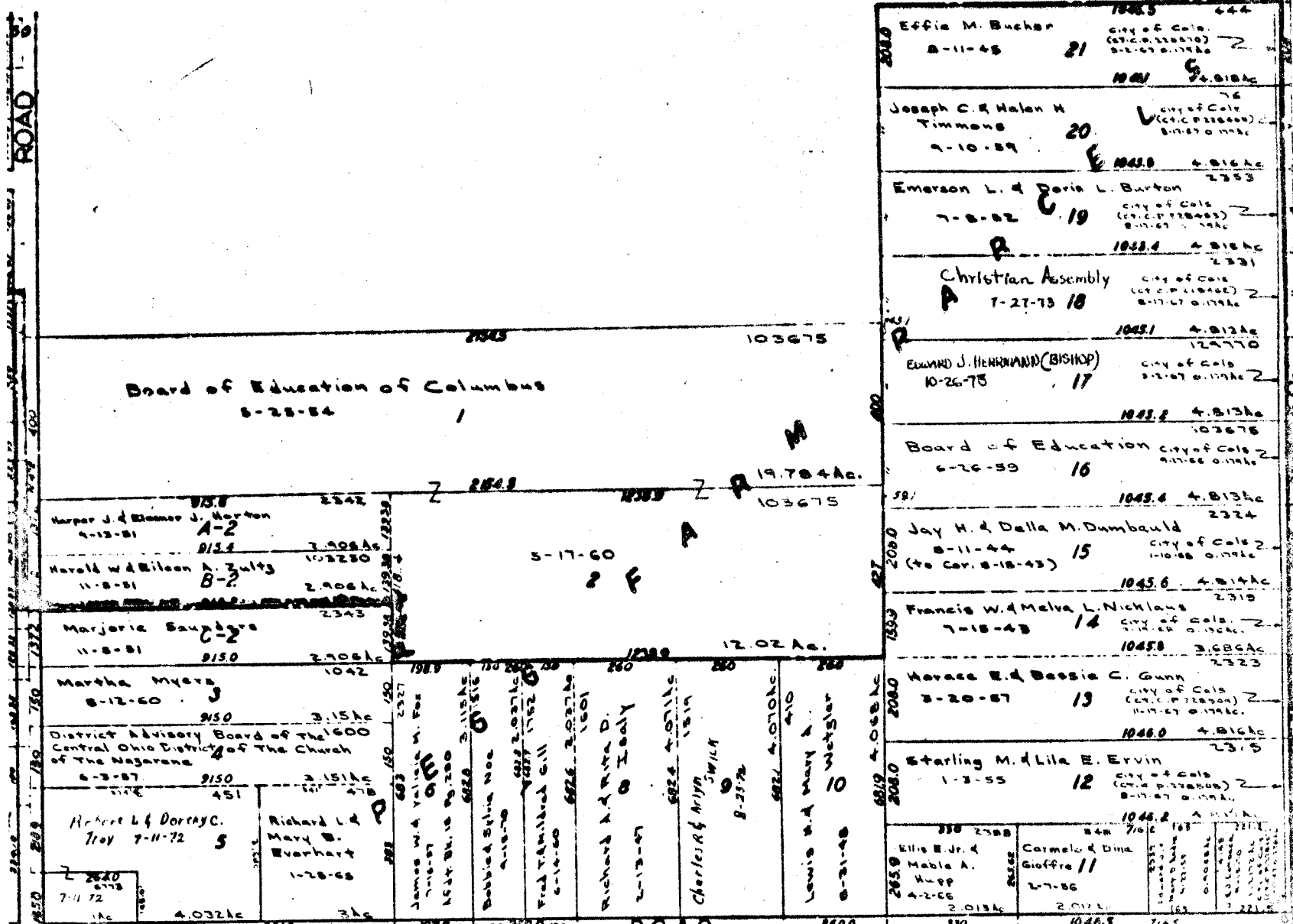


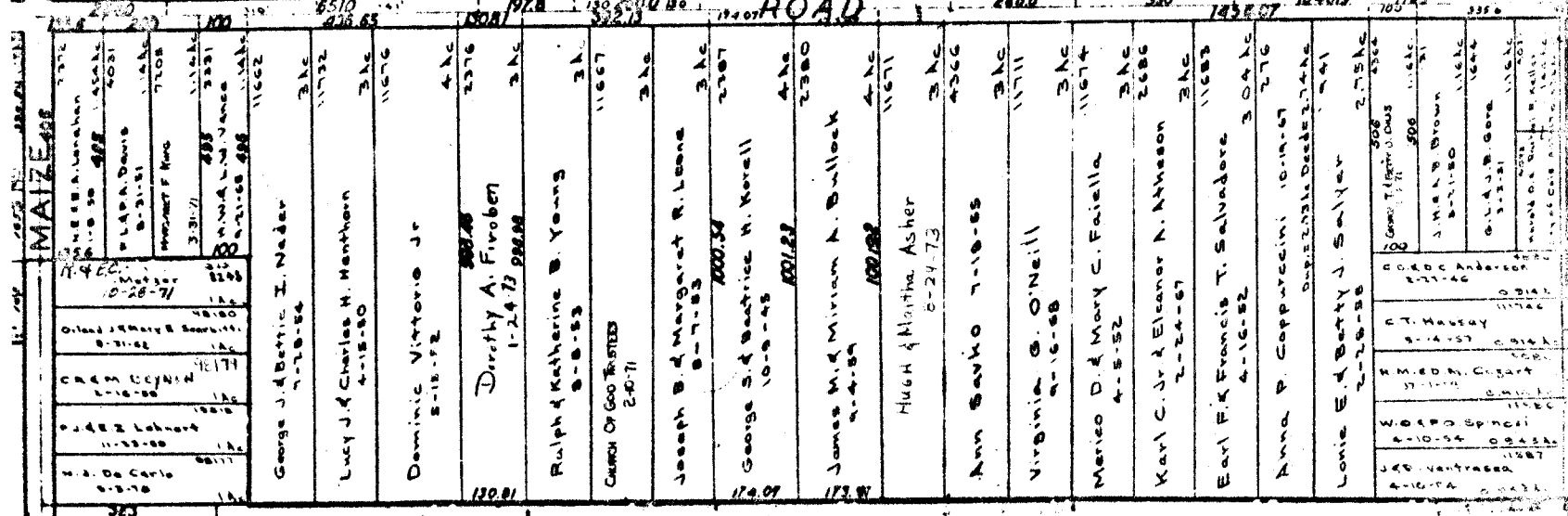
14-A

SCALE
1"=200'

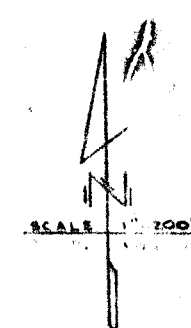
See
M-158-A



2080	1945.3	4.44	Effie M. Bucher 8-11-45	21	City of Colo. (City of Columbus) 8-11-45
	1945.3	4.812 Ac.	Joseph C. & Helen M. Timmons 7-10-57	20	City of Colo. (City of Columbus) 8-11-45
	1945.3	4.812 Ac.	Emerson L. & Doris L. Burton 7-8-52	19	City of Colo. (City of Columbus) 8-11-45
	1945.3	4.812 Ac.	Christian Assembly 7-27-73	18	City of Colo. (City of Columbus) 8-11-45
	1945.3	4.812 Ac.	EDWARD J. HENNING (BISHOP) 10-26-75	17	City of Colo. (City of Columbus) 8-11-45
	1945.3	4.812 Ac.	Board of Education 6-26-59	16	City of Colo. (City of Columbus) 8-11-45
	1945.3	4.812 Ac.	Jay H. & Della M. Dumbauld 8-11-44 (to Cor. 8-18-43)	15	City of Colo. (City of Columbus) 8-11-45
	1945.3	4.812 Ac.	Francis W. & Melva L. Nicklans 7-18-43	14	City of Colo. (City of Columbus) 8-11-45
	1945.3	3.684 Ac.	Novace E. & Bessie C. Gunn 3-20-57	13	City of Colo. (City of Columbus) 8-11-45
	1945.3	4.812 Ac.	Starling M. & Lila E. Ervin 1-3-55	12	City of Colo. (City of Columbus) 8-11-45
2059	2080	2080	Ellis E. Jr. & Mable A. 4-2-55	11	City of Colo. (City of Columbus) 8-11-45
	2080	2080	Carmelo & Dina Gioffre 7-7-55	10	City of Colo. (City of Columbus) 8-11-45



See
M-160



DETAIL
N.E. C
CLINTON
P. 10 TP. 3117
SCALE 1"=200'