

1478

5

CARTER ROAD

Robert M. Sherwood  
9-7-65

187.625 Ac.

Anna E. Bidwell  
6-11-62

Walter L. Clothilde Bluck  
5-12-52

882

Elizabeth S. Derror  
7-17-67  
Total = 165.07

(115.07 Ac)

Bidwell  
6-11-62

Jeanette Francis Bishop  
8-15-63

Lot 4

(79.85 Ac)

Superior Court Record 8-179

James B. Snyre et al (4)  
2-17-67

Lot 2

Total 140.376 Ac.

Bailey & Betty J. Bradley  
9-15-70

Lot 4

35.978 Ac.

9

DARBY CREEK

Anna E.

Lot 3  
The City of Columbus (C.G.P. 332,421)

(59.35 Ac)

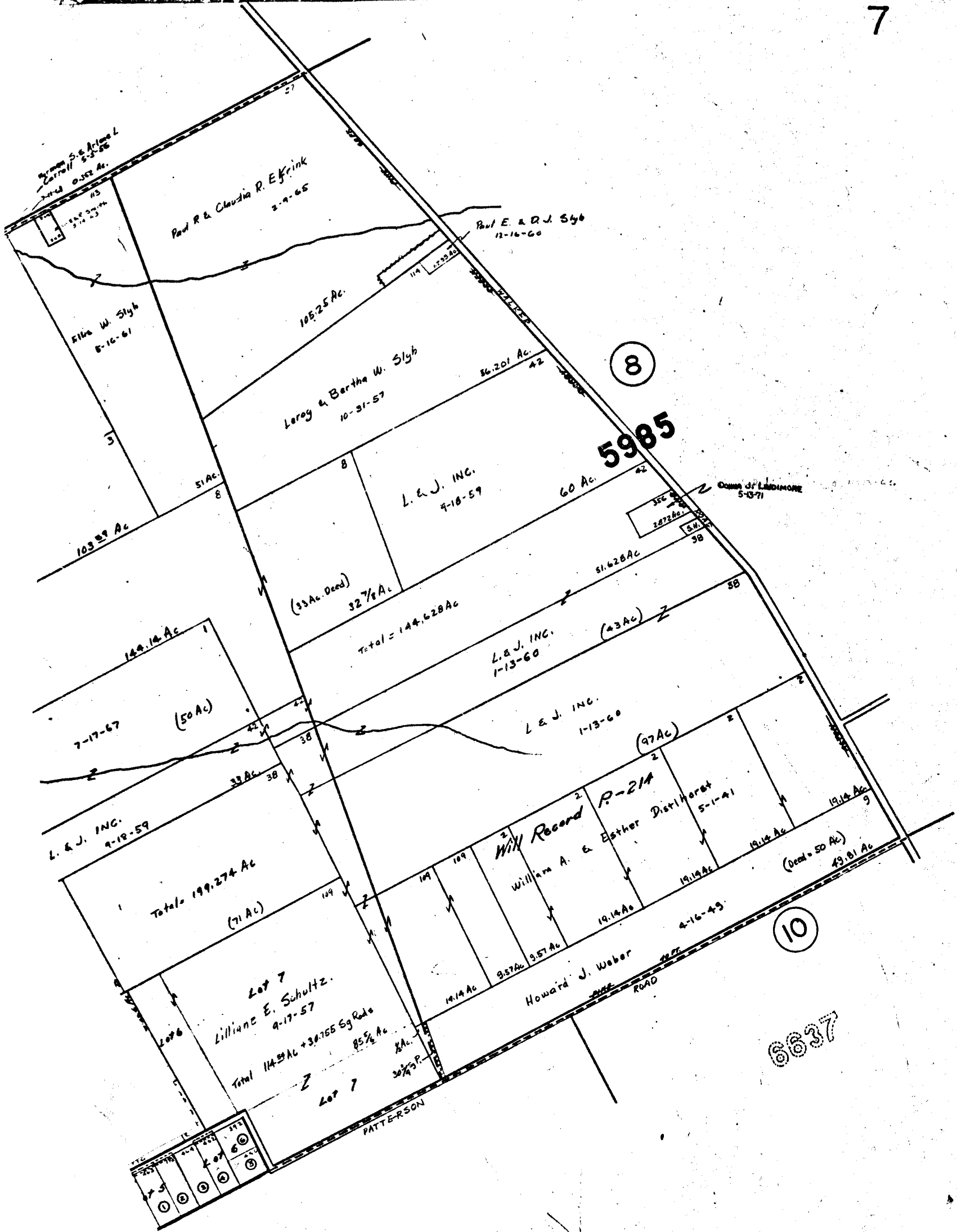
Lot 1  
Dover (C.G.P. 132,200)

PAUL & BETTY J. BRADLEY

Deed Book 181  
111 Page  
Recorder's Office  
9-15-70  
Total = 37.248 Ac.

2806

3092



- 2670
- ① Par. 463 - E. F. Weisheimer 5-10-66 2.492 Ac
  - ② Par. 172 - " " " " " "
  - ③ Par. 414 - CHARLES T. & MARILYN RICE 5-21-73 2.469 Ac
  - ④ Par. 462 - M. E. & B. Hoover 8-17-70 2.488 Ac
  - ⑤ Par. 440 - J. R. & M. Henson 7-26-65 1.673 Ac
  - ⑥ Par. 392 - M. E. & B. A. Hoover 8-28-66 2.0 Ac
  - ⑦
  - ⑧
  - ⑨
  - ⑩

HIGHWAY EASEMENT

SHEET NO. 3

N.W. CENT. PT. 3098

BROWN TP.

SCALE 1" = 100 FT