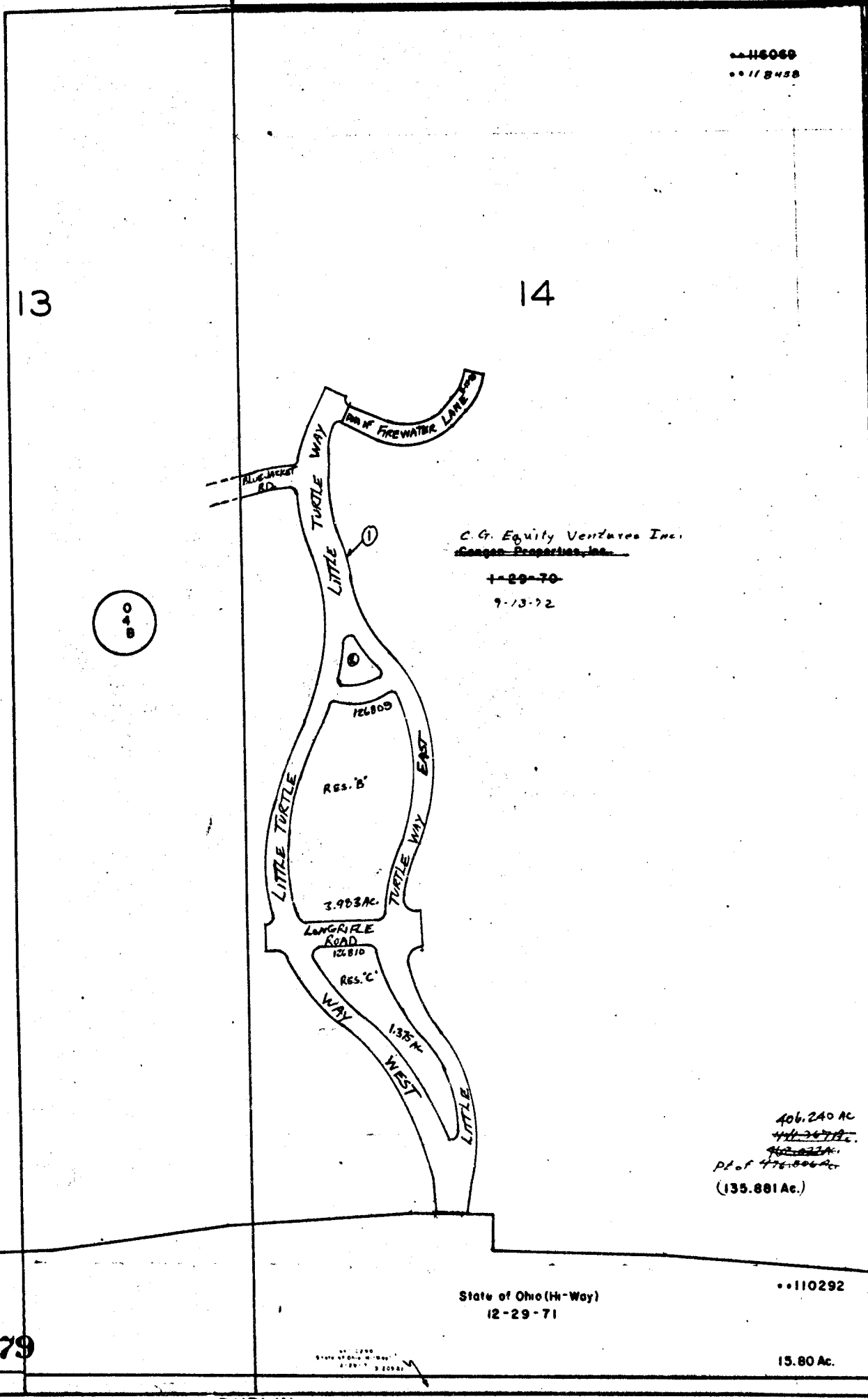


048

02



116059
1178438

C.G. Equity Ventures Inc.
Canaan Properties, Inc.
1-29-70
9-13-72

406.240 AC
~~411.247 AC~~
~~402.822 AC~~
Pt. of 476.006 AC
(135.881 Ac.)

State of Ohio (H-Way)
12-29-71

110292

15.80 Ac.

DUBLIN

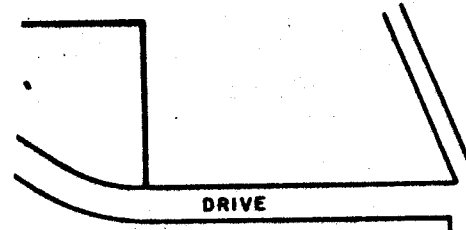
GRANVILLE

048

O-4-C
BLENDON TWP.
R17 TWP2



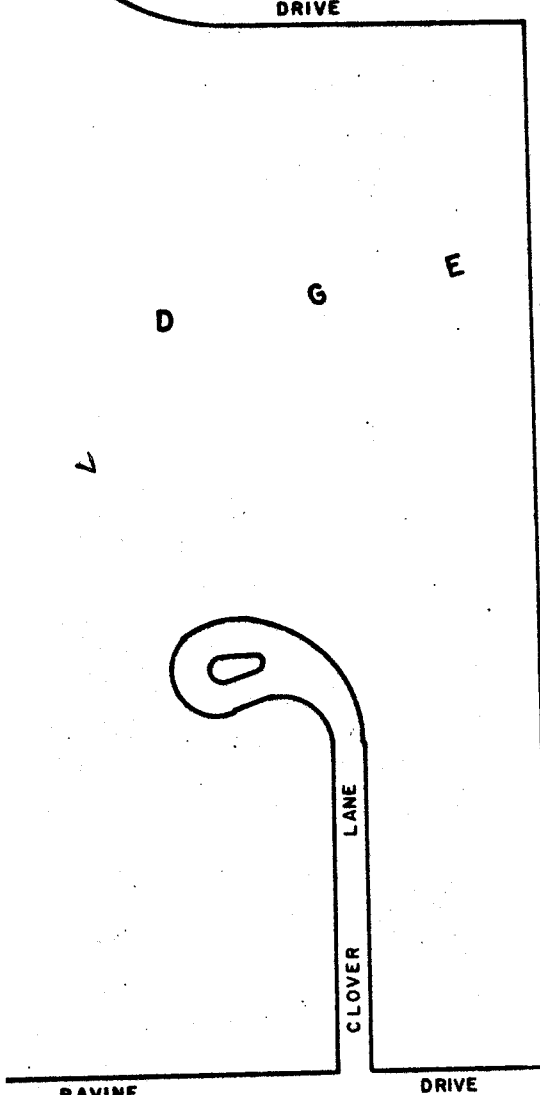
SCALE 1"=200'
TAXING DISTRICTS
BLENDON TWP.
...COLS.- WESTERVILLE SD
...BLENDON-PLAIN SD
...COLS.- PLAIN SD



0
2

WARNER ROAD

249



ROAD
ULRY

C.H.W. COMPANY
~~11-29-72~~
11-29-72

40.69 Ac.
Excepting 84.25 Sq.Rds.

C.H.W. COMPANY
~~11-29-72~~
11-29-72

23.122 Ac.

John W. & Lois M. Hill
1-21-55

10.304 Ac.

16

Ralph L. Katz
10-17-62

14.33 Ac.

162384
162386
162393
162381
162380
162387

7-7-70

13.985 Ac.

The City National Bank & Trust Co., Tr.
7-7-70

23.852 Ac.

The Ohio National Bank, Tr.
12-11-68

162382

27.332 Ac.

90.688 Ac.

110288

State of Ohio (H-Way)
12-29-71

12.069 Ac.

ROAD

SR 161

0
75

LITTLE TURTLE
RESERVE 'A' 10-30-72

P
W
T
N
I
A
L
P

3080
O-4-C

162384
162386
162393
162381
162380
162387

0
4
F