

Robert S 90
23 A

Edward Tooley
Christopher Humphrey
1618
131 A

Almina H & John H. Converse
3744

Almina H & John H. Converse
9-18-58
(Tot. Dup. 91,10A)
3720 Ac.

5

Hilton K. Sherwood
Hill Distributing Co
50-12-28-59
Happy & Sons Spt. 129
Part of 2399103 Ac
50 A
Sec. 0-8

Frieda K. Eiterman
10122 Ac

Albert W. Burnside
4-15-60
7693
20A

Albert
61.25 Ac
10122 Ac

Anneliza Burnside et al (4)
4-15-60
3225 A in Fr. Co.

Elton M. Roby
49.52 A

Esther R. Sherwood
12-22-66

R. Wilcox
4480 (Deed)
(2885 A) in Survey

Alta W. Williams
10-22-42
95 A

52.55 A

Howard S. Frost
Be Ivo Dunham
3-20-42
16985 Ac
(Cont # 39525 105.8 Ac)

Ruth P. Frost
Jacob E. Frost
Don A. Helmuth
5-17-56

16 1/2 Ac
Sec 0 110

WASHINGTON TOWNSHIP LINE

24 Ac

Thos & Anne Healy
Total 10512 A up
Herbert W & Marie Hamilton
11-9-42

Esther R. Sherwood
12-22-66

Esther R. Sherwood
12-22-66

Esther R. Sherwood
12-22-66

Howard S. Frost
Be Ivo Dunham
3-20-42

88.50 A

100A 10122 Ac

Anneliza Burnside et al (4)
4-15-60

Laura B. Burnside et al
10-19-69

8

Harry H. Boggis
7-18-40

Harry H. Boggis
7-18-40

Harry H. Boggis
7-18-40

Harry H. Boggis
7-18-40

Harry H. Boggis
7-18-40

Harry H. Boggis
7-18-40

Harry H. Boggis
7-18-40

Harry H. Boggis
7-18-40

Harry H. Boggis
7-18-40

Harry H. Boggis
7-18-40

Harry H. Boggis
7-18-40

Harry H. Boggis
7-18-40

60

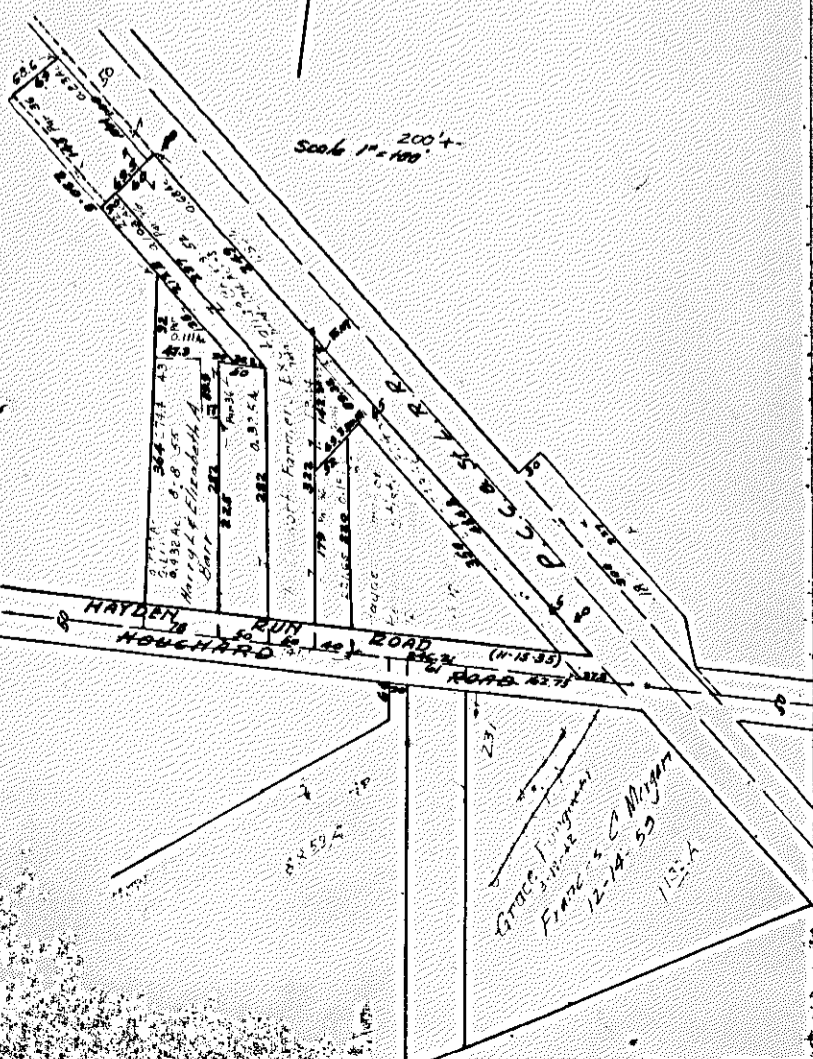
NORWICH TOWNSHIP LINE

WASH LINE

WASH LINE

WASH LINE

WASH LINE



Scale 1" = 100'

Grand Trunk
Frost & Co. May
12-10-55
115 A