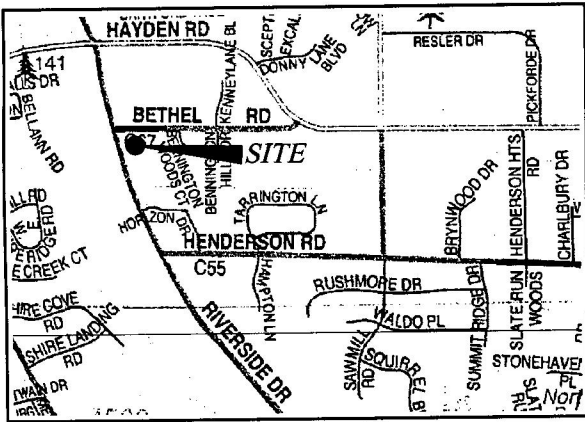
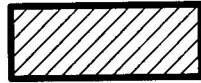





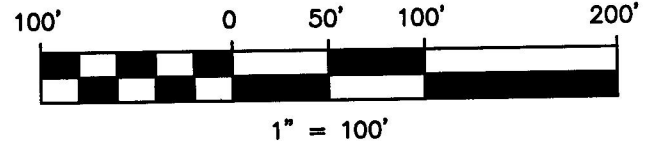
**9.7 ACRE ANNEXATION FROM PERRY TOWNSHIP TO THE CITY OF UPPER ARLINGTON
EXPEDITED TYPE II ANNEXATION UNDER ORC §709.021 AND §709.023
SITUATED IN THE STATE OF OHIO, COUNTY OF FRANKLIN, TOWNSHIP OF PERRY
LOCATED IN PART OF QUARTER TOWNSHIP 2, TOWNSHIP 1, RANGE 19,
UNITED STATES MILITARY DISTRICT**



Location Map - NTS

LEGEND

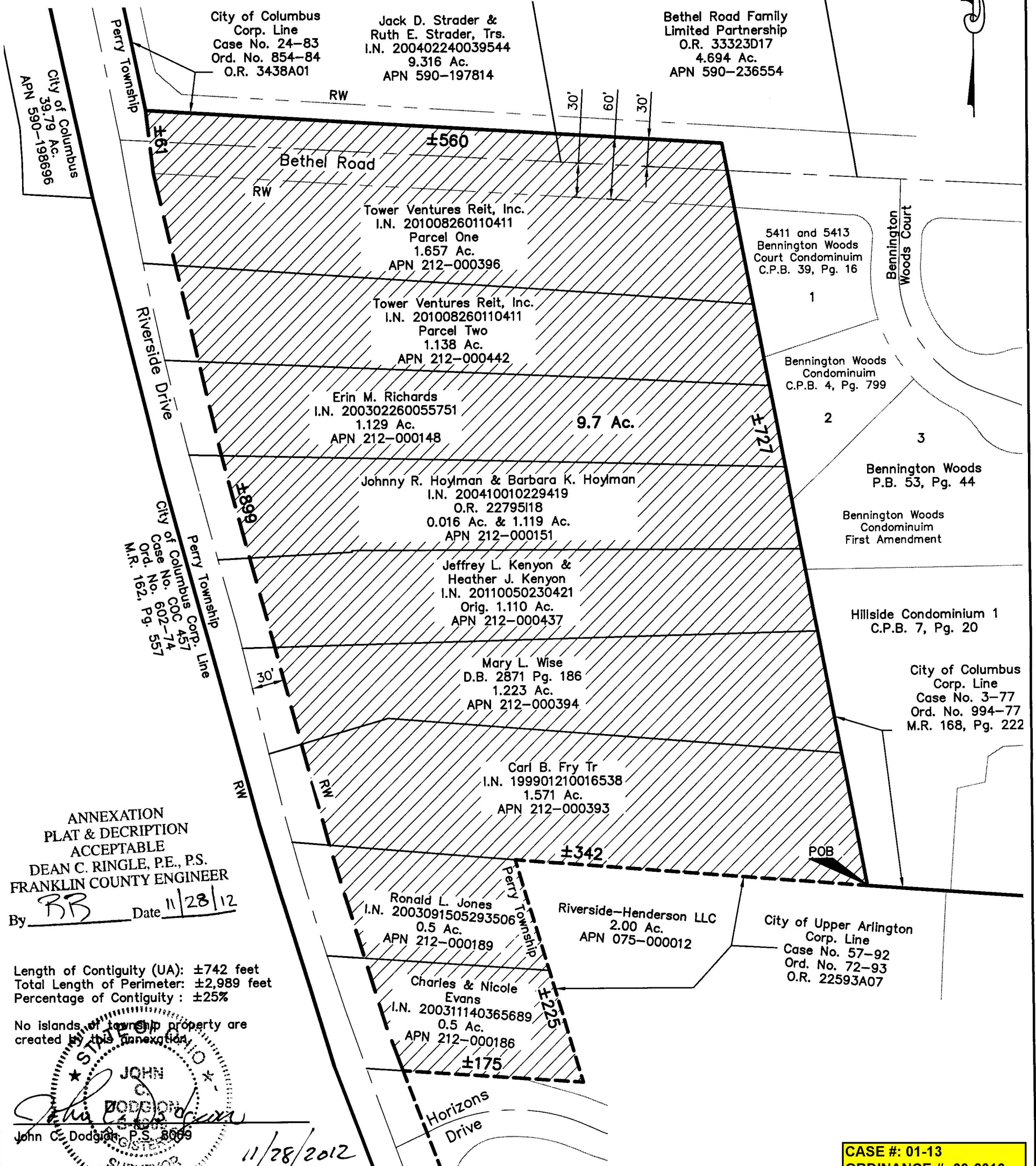
-  AREA TO BE ANNEXED
-  EXISTING COLUMBUS CORP LINE
-  EXISTING UPPER ARLINGTON CORP LINE
-  PROPOSED CORP LINE



RECEIVED

NOV 28 2012

Franklin County Engineer
Dean C. Ringle, P.E., P.S.



Length of Contiguity (UA): ±742 feet
Total Length of Perimeter: ±2,989 feet
Percentage of Contiguity: ±25%

No islands of township property are created by this annexation.

JOHN DODGSON
John C. Dodgson, P.S. 8096

Advanced Civil Design, Inc.
422 Beecher Road
Gahanna, OH 43230
Phone 614-428-7750

11/28/2012

Job No.: 12-0038-65
Date: 08/31/2012

**CASE #: 01-13
ORDINANCE #: 39-2013
RECORDED IN:
201307150118132**