

# FRANKLIN COUNTY ENGINEER'S 2021 CONSTRUCTION PROJECT LIST VIRTUAL OPEN HOUSE



Cornell R. Robertson, P.E., P.S.  
Franklin County Engineer  
[www.franklincountyengineer.org](http://www.franklincountyengineer.org)  
Facebook: @franklincountyengineer







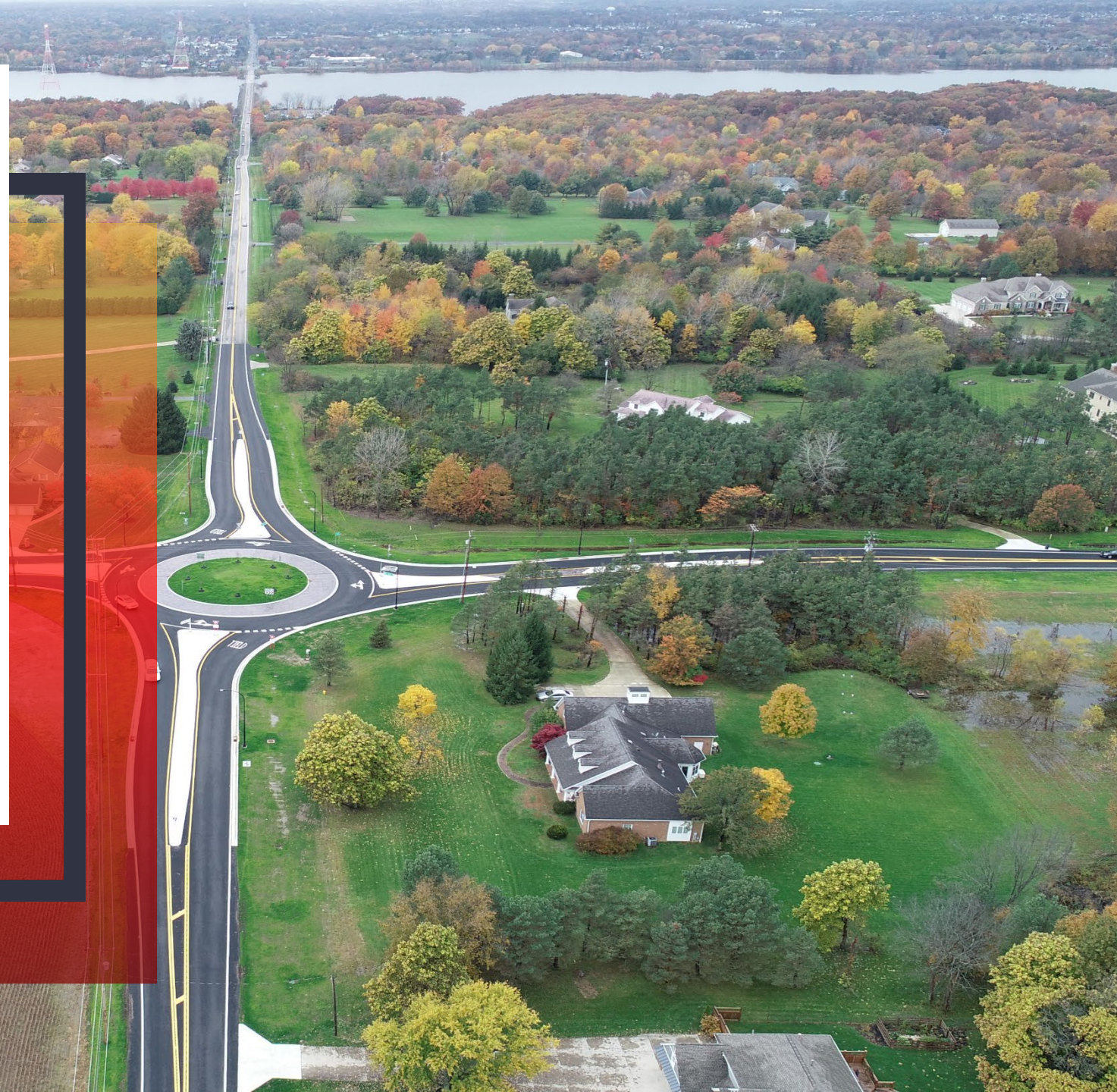
# Franklin County Engineer's 2021 Construction Project List Virtual Open House

## Overview:

1. Welcome
2. Introduction
3. Diversity & Inclusion
4. Project Details
5. Q&A/Closing Remarks



**Cornell R. Robertson, P.E., P.S.**  
FRANKLIN COUNTY ENGINEER  
FRANKLIN COUNTY DRAINAGE ENGINEER





# Introduction

|                         |                       |
|-------------------------|-----------------------|
| Simone Burley           | Diversity & Inclusion |
| Brad Foster, P.E., P.S. | Highway Design        |
| Jaime Tickle, P.E.      | Resurfacing           |
| Ed Herrick, P.E.        | Bridge Design         |
| Jim Ramsey, P.E.        | Drainage              |



**Cornell R. Robertson, P.E., P.S.**  
FRANKLIN COUNTY ENGINEER  
FRANKLIN COUNTY DRAINAGE ENGINEER







# Diversity & Inclusion







**Cornell R. Robertson, P.E., P.S.**  
FRANKLIN COUNTY ENGINEER

FRANKLIN COUNTY  
ENGINEER'S ANTIRACISM  
& EQUITY PROGRAM

June 30, 2020

The Franklin County Engineer's Office denounces racism in all forms. More needs to be done now. We pledge to listen and continue to learn more from those affected by racism, and we will strive to promote meaningful and lasting change in our organization, Franklin County, and society at large.



**Cornell R. Robertson, P.E., P.S.**  
FRANKLIN COUNTY ENGINEER

Franklin County Engineer's  
Equitable Business  
Enterprise Program for  
Locally Funded Projects

Franklin County Engineer Cornell R. Robertson, P.E., P.S.

May 4, 2020



**Cornell R. Robertson, P.E., P.S.**  
FRANKLIN COUNTY ENGINEER



**EMPLOYEE INVESTMENT PROGRAM**



# Diversity, Inclusion, and Equity

- Three Primary Pillars
  - Workforce Diversity
  - Consultant/Contractor/Vendor/Supplier Diversity
  - Outreach to Diverse and Underserved Communities
- Three Programs
  - Franklin County Engineer's Equitable Business Enterprise Program for Locally Funded Projects
  - Franklin County Engineer's Antiracism and Equity Program
  - Employee Investment Program





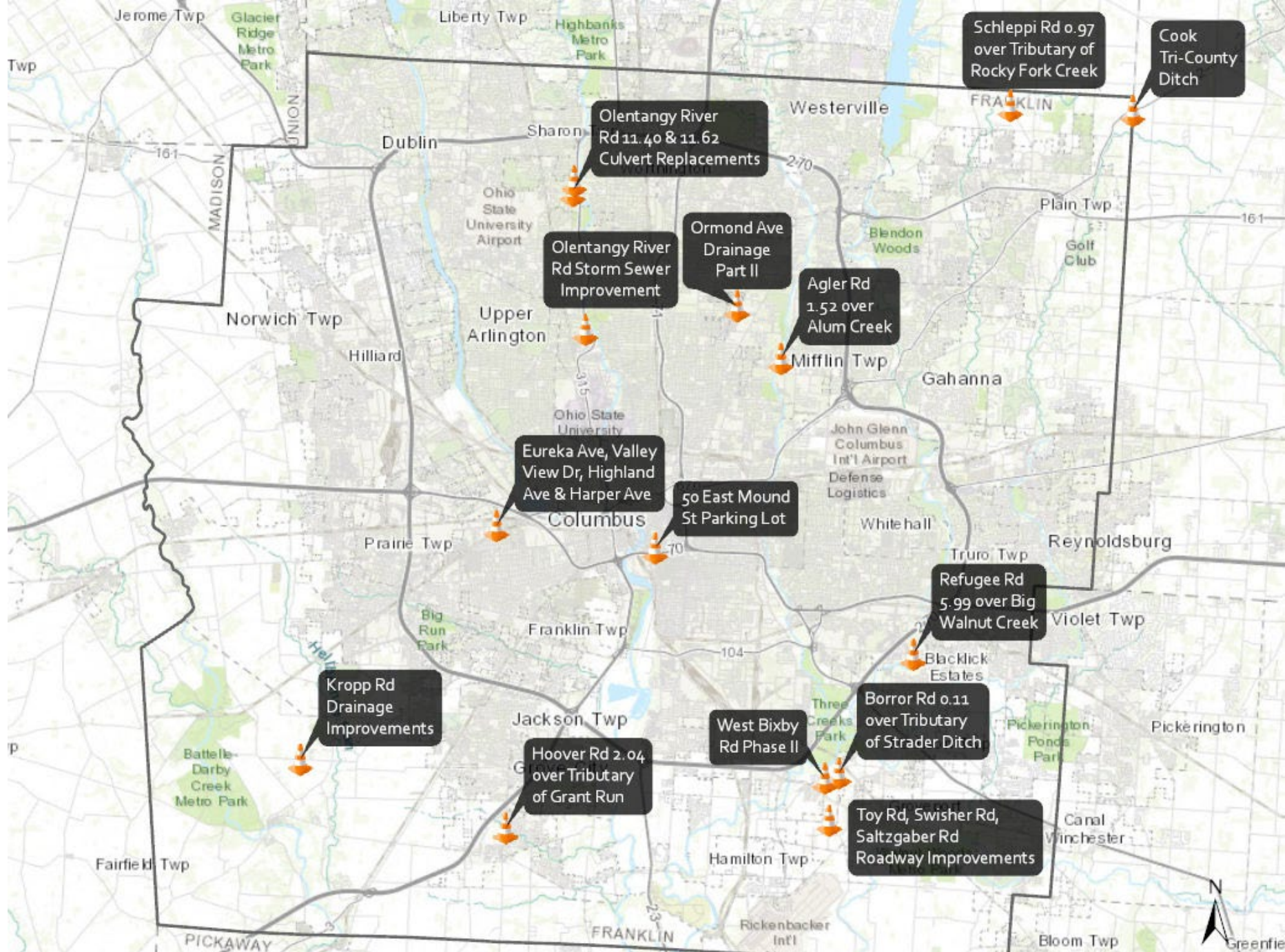
# 2021 Construction Projects



**Cornell R. Robertson, P.E., P.S.**  
FRANKLIN COUNTY ENGINEER  
FRANKLIN COUNTY DRAINAGE ENGINEER







Sources: Esri, HERE, Garmin, Intermop, increment P Corp., GEBCO, USGS, FAO, NPS, NRCAN, GeoBase, IGN, Kadaster NL, Ordnance Survey, Esri Japan, METI, Esri China (Hong Kong), (c) OpenStreetMap contributors, and the GIS User Community



# Highway Projects

- Eureka Avenue, Valley View Drive, Highland Avenue, & Harper Avenue
- Ormond Avenue Drainage Part II
- Toy Road, Swisher Road, & Saltzgaber Road







# Eureka Avenue, Valley View Drive Highland Avenue & Harper Avenue

## Shoulder Widening and Drainage Improvement

- Located in the Village of Valleyview
- Engineer's Estimate: \$350,000
- Project Advertisement: June 2021
- Construction Start Date: July 2021
- MOT: Traffic Maintained





# Ormond Avenue Drainage - Part II

## Drainage Improvement

- Located in the northeast quadrant, Clinton Township west of Cleveland Avenue
- Engineer's Estimate: \$350,000
- Project Advertisement: February 2021
- Construction Start Date: March 2021
- MOT: Full Closure With Detour





# Toy Road, Swisher Road & Saltzgaber Road

## R o a d w a y I m p r o v e m e n t

- Located in Madison Township and City of Groveport
- Engineer's Estimate: Part 1 - \$2,000,000  
Part 2 - \$850,000
- Project Advertisement: April 2021
- Construction Start Date: May 2021
- MOT: Full Closure With Detour





# Resurfacing & Special Projects

- 50 E. Mound Street Parking Lot
- Franklin County Resurfacing Program
- Township Resurfacing Program
- Franklin County Maintenance & Safety Program





# 50 E. MOUND STREET PARKING LOT

For Board of County Commissioners

- Located in downtown Columbus between S. High Street and Third Street
- Engineer's Estimate: \$500,000
- Project Advertisement: April 2021
- Construction Start Date: June 2021
- MOT: Traffic Maintained







## 2021 Franklin County Resurfacing Programs

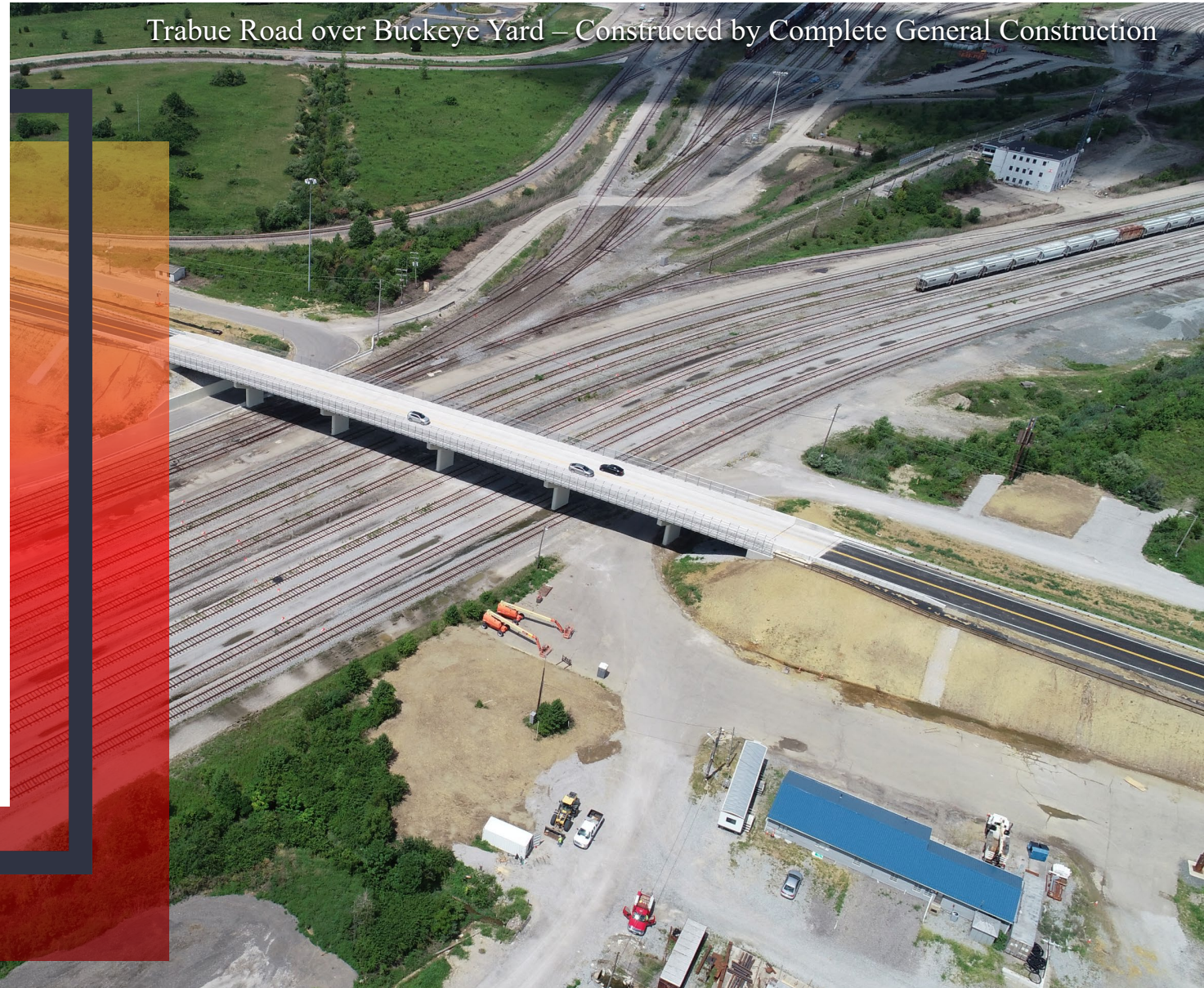
- Located in various locations throughout Franklin County
- Upgrading various sections of Franklin County and participating Township roadways with asphalt resurfacing
- Estimated construction cost:
  - Franklin County \$3 million
  - Township \$2.5 million
  - Maintenance and Safety Program \$0.5 million
- Projects Advertisement: Spring 2021
- Construction Start Date: Summer 2021
- MOT: Traffic Maintained





# Bridge Projects

- Agler Road over Alum Creek
- Bixby Road including FCEO Culvert
- Borrer Road over Tributary of Strader Ditch
- Hoover Road over Tributary of Grant Run
- Olentangy River Road 11.40 & 11.62 Culverts
- Olentangy River Road Storm Sewer Improvement
- Refugee Road over Big Walnut Creek
- Schleppe Road over Tributary of Rocky Fork Creek
- 2022 Bridge Maintenance

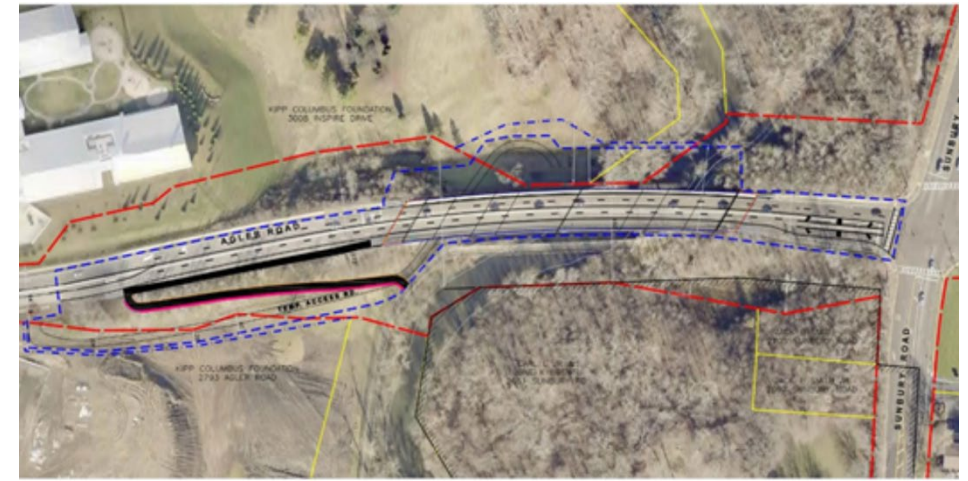




# Agler Road 1.52 over Alum Creek

## Superstructure Replacement and Trail Connector

- Located between Sunbury Road and the KIPP School
- Engineer's Estimate: \$4,800,000
- Project Advertisement: November 2021
- Construction Start Date: February 2022
- MOT: Traffic Maintained







## West Bixby Road – Phase 2

### Road Improvement & Culvert Replacement

- Located between Groveport Road and SR317
- Engineer's Estimate: \$1,850,000
- Project Advertisement: February 2021
- Construction Start Date: May 2021
- MOT: Traffic Maintained With Short, Full Closure





# Borror Road 0.11 over Tributary of Strader Ditch

## Culvert Replacement

- Located in Jackson Township, between Hiner Rd and Vern Place
- Engineer's Estimate: \$240,000 (boxes have been purchased)
- Project Advertisement: May 2021
- Construction Start Date: June 2021
- MOT: Full Closure







# Hoover Road 2.04 over Tributary of Grant Run

## Culvert Replacement

- Located in Jackson Township, between SR 665 & Zuber Road
- Engineer's Estimate: \$300,000 (boxes have been purchased)
- Project Advertisement: May 2021
- Construction Start Date: June 2021
- MOT: Full Closure





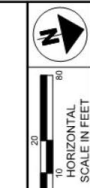
# Olentangy River Road 11.40 & 11.62 Culvert Replacements

## Culvert Replacement

- Located between Dublin-Granville Road and Robbins Way
- Engineer's Estimate: \$1,100,000
- Project Advertisement: March-May 2021
- Construction Start Date: June 2021
- MOT: Full Closure



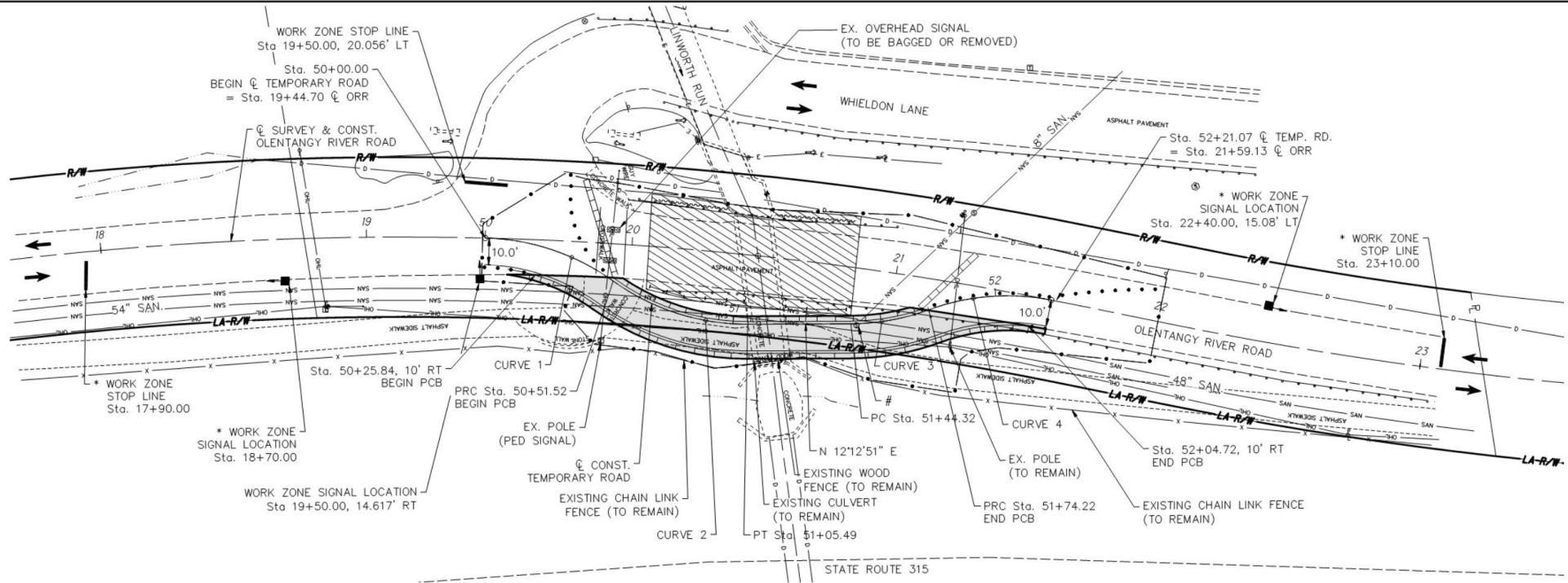




CALCULATED  
C.K.R.  
CHECKED  
S.P.K.

PLAN AND PROFILE  
TEMPORARY ROAD

OLENTANGY RIVER ROAD  
SHA-CR9-11.62

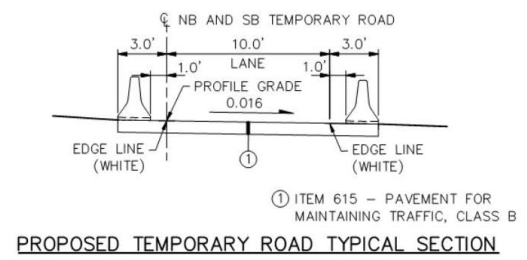
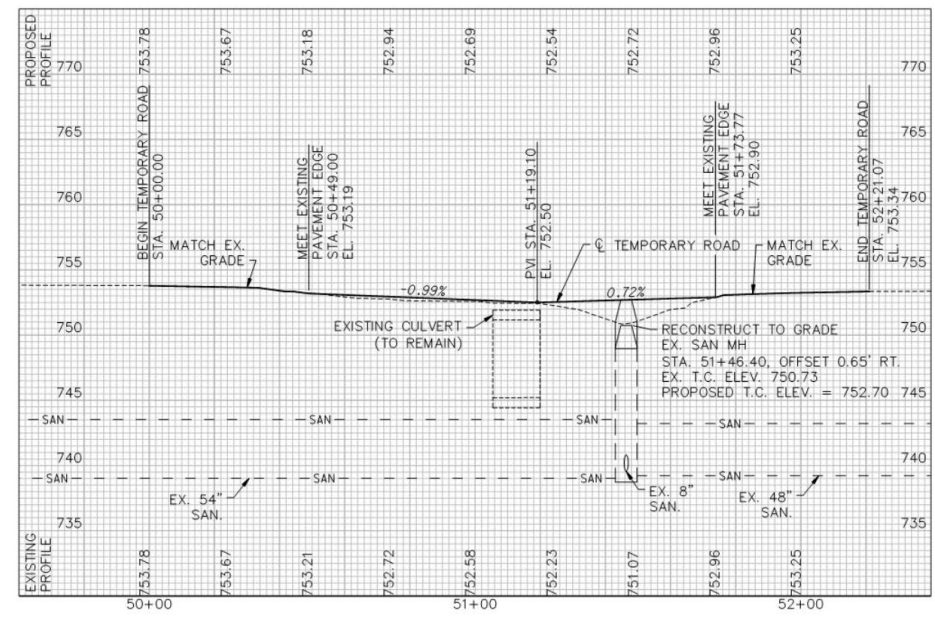


**CURVE 1 DATA**  
 P.I. = Sta. 50+26.56  
 D = 34' 19" 15"  
 Dc = 66' 37" 23"  
 R = 86.000  
 T = 26.56'  
 L = 51.52'  
 E = 4.01  
 C = 50.75  
 C. B. = N 31° 00' 57" E

**CURVE 2 DATA**  
 P.I. = Sta. 50+79.43  
 D = 35' 57" 44"  
 Dc = 66' 37" 23"  
 R = 86.000  
 T = 27.91'  
 L = 53.98'  
 E = 4.42  
 C = 53.10  
 C. B. = N 30° 11' 43" E

**CURVE 3 DATA**  
 P.I. = Sta. 51+59.42  
 D = 19' 55" 19"  
 Dc = 66' 37" 23"  
 R = 86.000  
 T = 15.10'  
 L = 29.90'  
 E = 1.32  
 C = 29.75  
 C. B. = N 2° 15' 12" E

**CURVE 4 DATA**  
 P.I. = Sta. 51+98.24  
 D = 31' 12" 45"  
 Dc = 66' 37" 23"  
 R = 86.000  
 T = 24.02'  
 L = 46.85'  
 E = 3.29  
 C = 46.27  
 C. B. = N 7° 53' 55" E



① ITEM 615 - PAVEMENT FOR MAINTAINING TRAFFIC, CLASS B  
**PROPOSED TEMPORARY ROAD TYPICAL SECTION**

- LEGEND**
- DIRECTION OF TRAFFIC
  - WORK ZONE
  - SEE ODOT SCD MT-96.11, REVISED 04-17-2020 FOR ADVANCED SIGNAGE, SIGNAL, AND STOP BAR LOCATIONS
  - RECONSTRUCT TO GRADE EX. SAN MH
  - PROPOSED TEMPORARY PAVEMENT

U:\accounts\FCE\FCE013001 - FBA-CR9-11.62 over Linworth Run\DESIGN\PROJECT\Drawings\DOT\Sheets\M01.dwg 9/26/2020 2:59:18 PM Craig Katsberg





# Olentangy River Road Storm Sewer Improvement

## Drainage Improvement

- Located between Crestway Drive and Caruthers Drive
- Engineer's Estimate: \$265,000
- Project Advertisement: February 2021
- Construction Start Date: June 2021
- MOT: Traffic Maintained





# Refugee Road 5.99 over Big Walnut Creek

Bridge Widening & SUP Extension

- Located between Nathaniel Blvd. and Noe-Bixby Rd.
- Engineer's Estimate: \$2,500,000
- Project Advertisement: December 2020
- Construction Start Date: June 2021
- MOT: Traffic Maintained







# Schleppi Road 0.97 over Tributary of Rocky Fork Creek

## Culvert Replacement

- Located in Plain Township, between Fancher Road and Walnut Street
- Engineer's Estimate: \$260,000 (boxes have been purchased)
- Project Advertisement: May 2021
- Construction Start Date: June 2021
- MOT: Full Closure





# 2022 Bridge Maintenance

## General Repair Contract

- Various locations across Franklin County
- Engineer's Estimate: \$250,000
- Project Advertisement: November 2021
- Construction Start Date: March 2021
- MOT: TBD





# Drainage Projects

- Cook Tri-County Ditch
- Kropp Road Drainage Outlet Improvements
- 2022 Drainage Maintenance



**Cornell R. Robertson, P.E., P.S.**  
FRANKLIN COUNTY ENGINEER  
FRANKLIN COUNTY DRAINAGE ENGINEER





# Cook Tri-County Ditch

## P i p e I n s t a l l a t i o n

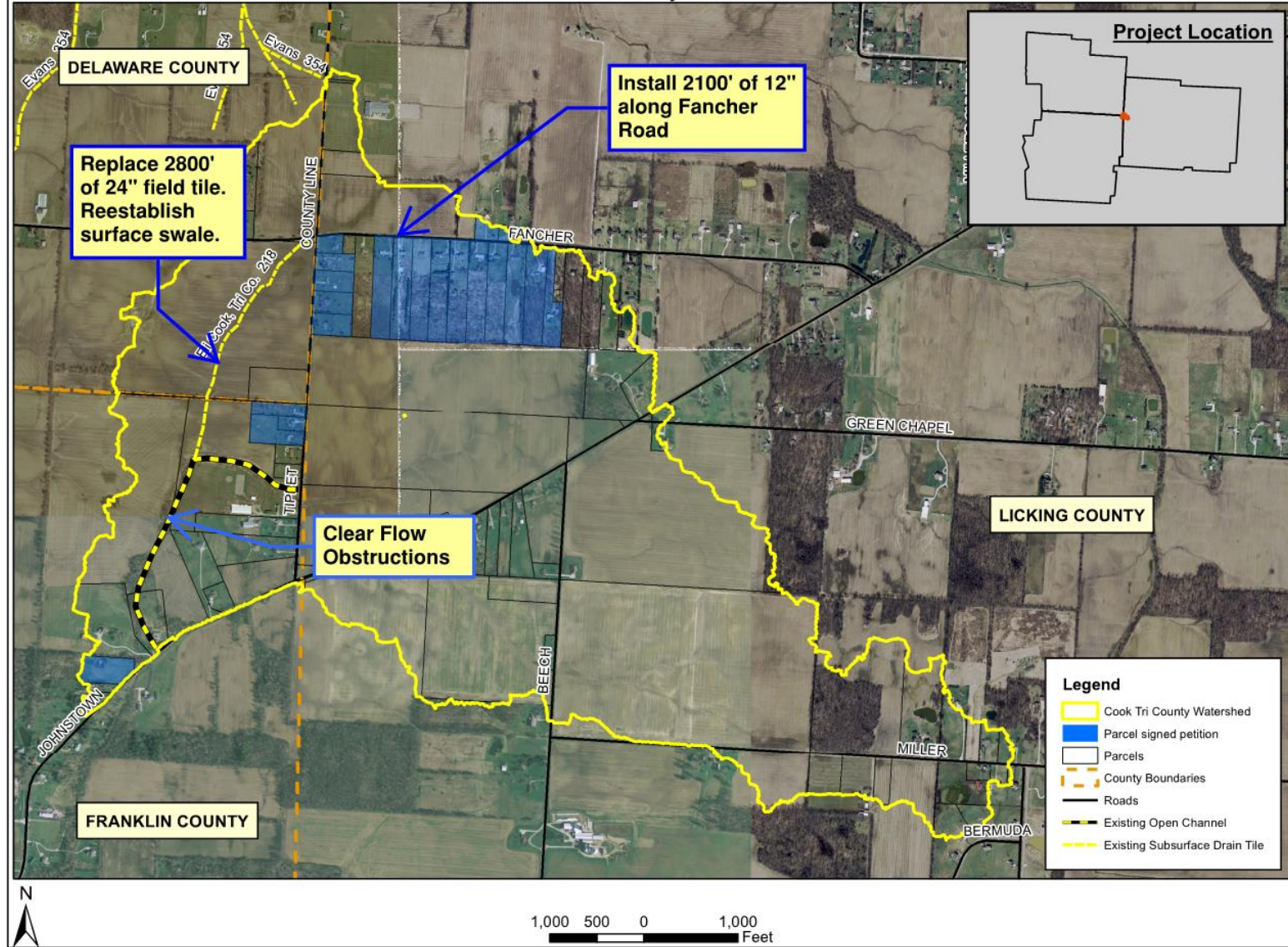
- Located at the confluence of Franklin, Delaware and Licking counties
- Engineer's Estimate: \$400,000
- Project Advertisement: October 2021
- Construction Start Date: January 2022
- MOT: One-lane, two-way traffic during construction of two road crossings



Cornell R. Robertson, P.E., P.S.  
FRANKLIN COUNTY ENGINEER  
FRANKLIN COUNTY DRAINAGE ENGINEER







**Cornell R. Robertson, P.E., P.S.**  
 FRANKLIN COUNTY ENGINEER  
 FRANKLIN COUNTY DRAINAGE ENGINEER





# Kropp Road Drainage Outlet Improvements

## Drainage Improvement

- Located in southwest Franklin County between Rolling Hills Lane and Norton Road
- Engineer's Estimate: \$1,200,000
- Project Advertisement: December 2021
- Construction Start Date: January 2022
- MOT: Residential Access Maintained

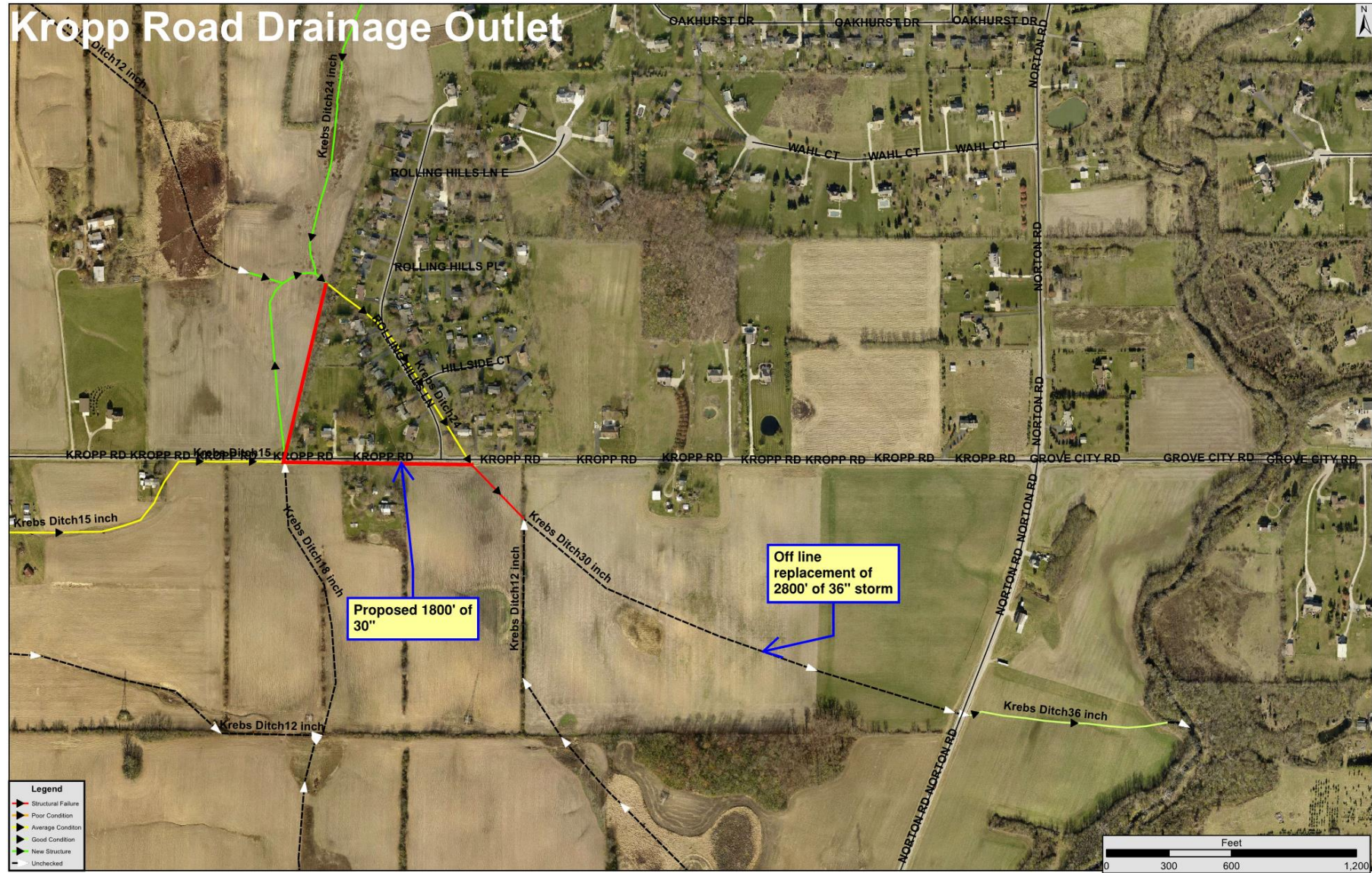


**Cornell R. Robertson, P.E., P.S.**  
FRANKLIN COUNTY ENGINEER  
FRANKLIN COUNTY DRAINAGE ENGINEER





# Kropp Road Drainage Outlet



- Legend**
- Structural Failure
  - Poor Condition
  - Average Condition
  - Good Condition
  - New Structure
  - Unchecked



**Cornell R. Robertson, P.E., P.S.**  
 FRANKLIN COUNTY ENGINEER  
 FRANKLIN COUNTY DRAINAGE ENGINEER





# 2022 Drainage Maintenance

## General Drainage Repair

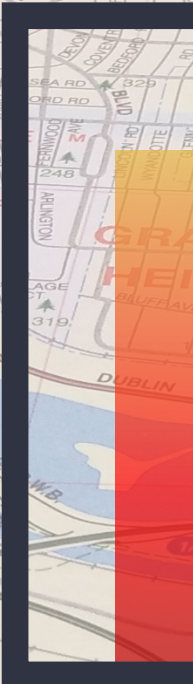
- Various locations in Franklin County
- 2019 General Drainage
  - Engineer's Estimate: \$650,000
  - 7 Projects
- 2020-21 General Drainage
  - Engineer's Estimate: \$950,000
  - 4-5 Projects
- 2022 General Drainage
  - Engineer's Estimate: \$750,000



**Cornell R. Robertson, P.E., P.S.**  
FRANKLIN COUNTY ENGINEER  
FRANKLIN COUNTY DRAINAGE ENGINEER







# QUESTIONS?



**Cornell R. Robertson, P.E., P.S.**  
FRANKLIN COUNTY ENGINEER  
FRANKLIN COUNTY DRAINAGE ENGINEER







**THANK YOU FOR ATTENDING!**